

Preliminary PIPER Data from the CARE Experiment

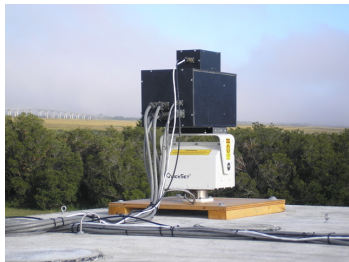
Robert A. Marshall, Robert T. Newsome

Department of Electrical Engineering
Stanford University

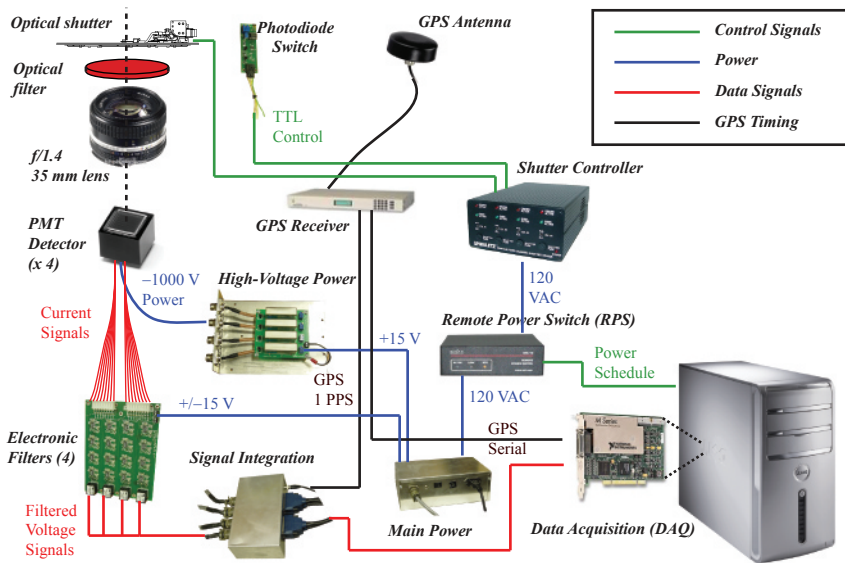
September 9, 2009



PIPER Instrument

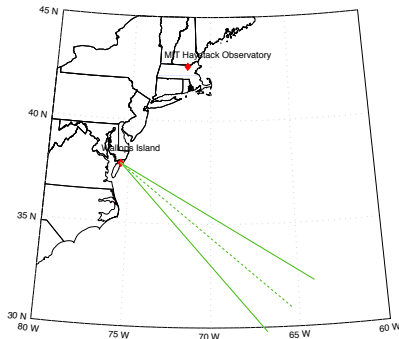


Instrument Details

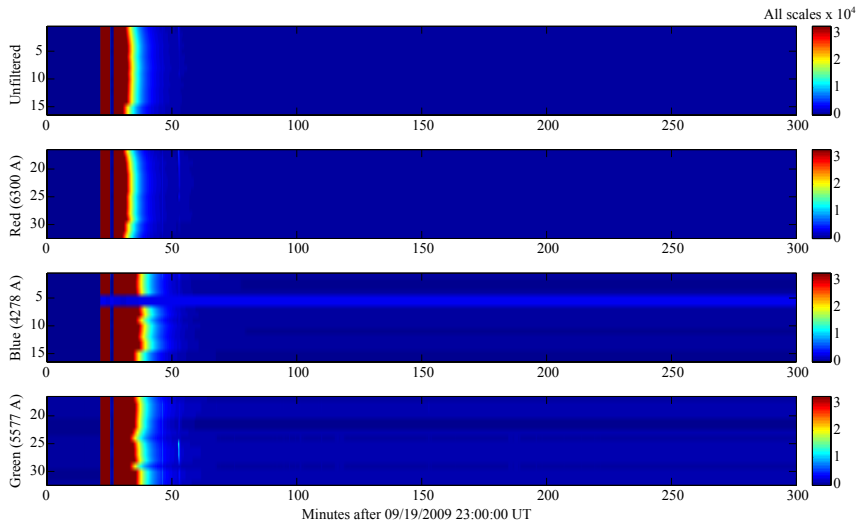


Experiment Setup

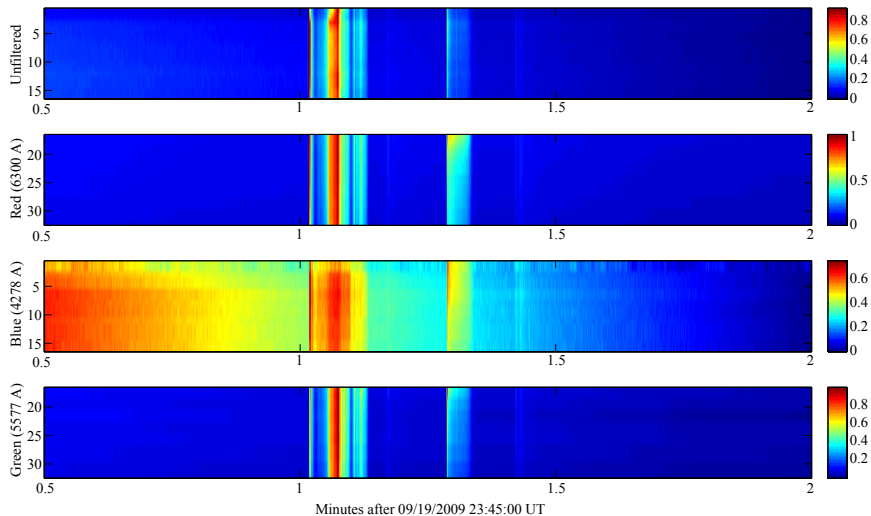
- Filters:
 - Blue (4278 Å)
 - Green (5577 Å)
 - Red (6300 Å)
 - White light (PMT response: 185–900 nm)
- Orientation:
 - 130 degrees E of N
 - 48.8 degrees elevation
- Recording:
 - 25,000 Samples / s / ch
 - Decimated as needed
- Field-of-View:
 - 18×18 degrees
 - At 380 km range ($250 \cdot \cos 49^\circ$): 120 km width



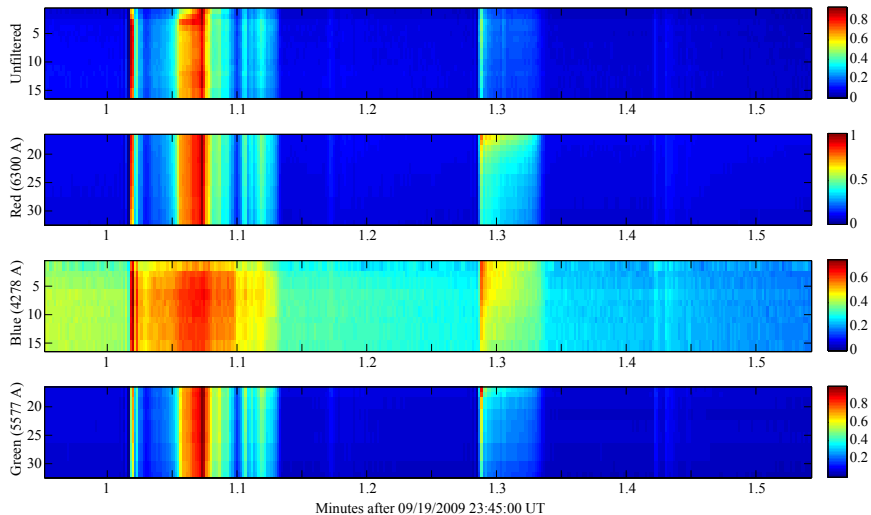
Overview Data



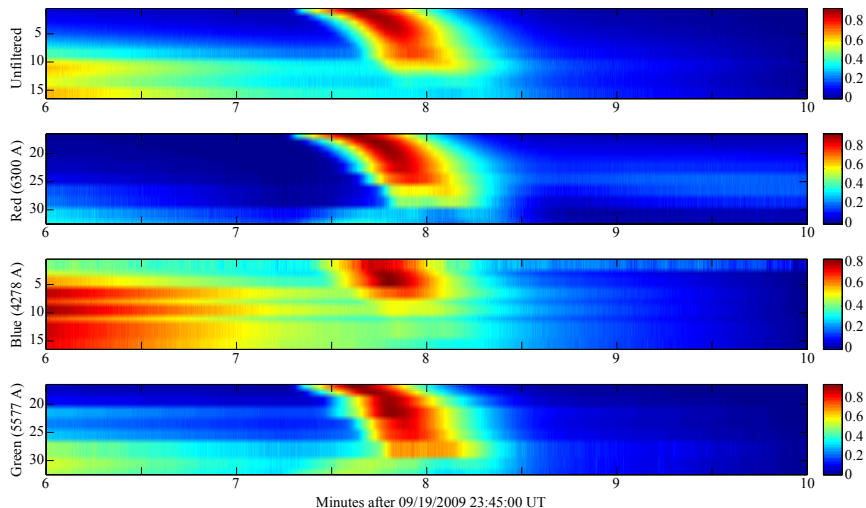
Launch Data



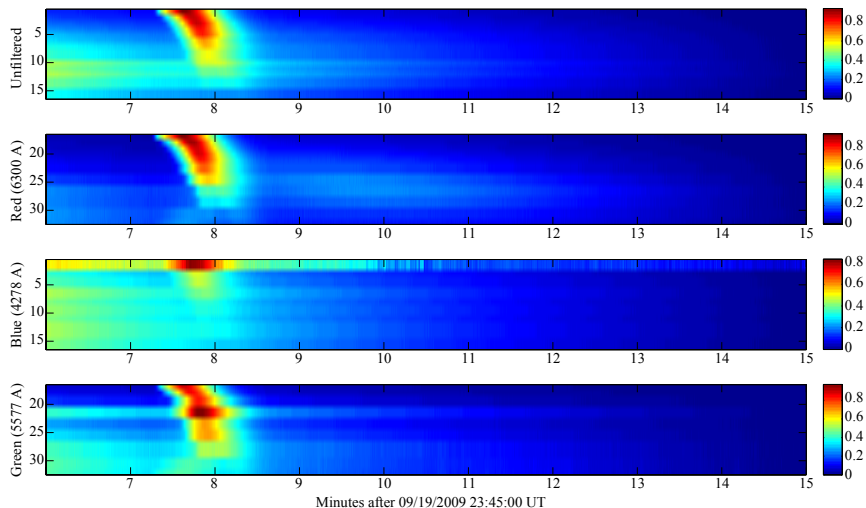
Launch Data



Release Data



Release Data



Release data - time series

