

**和迪股份有限公司**

**HIDES TECHNOLOGY**

OCT., 2018

## 公司簡介 (1/2)

- 設立日期：101年6月12日
- 實收資本額：新台幣1,000萬元
- 地址：高雄市新興區民享街36號

台北辦公室:新北市新店區寶中路86號6樓

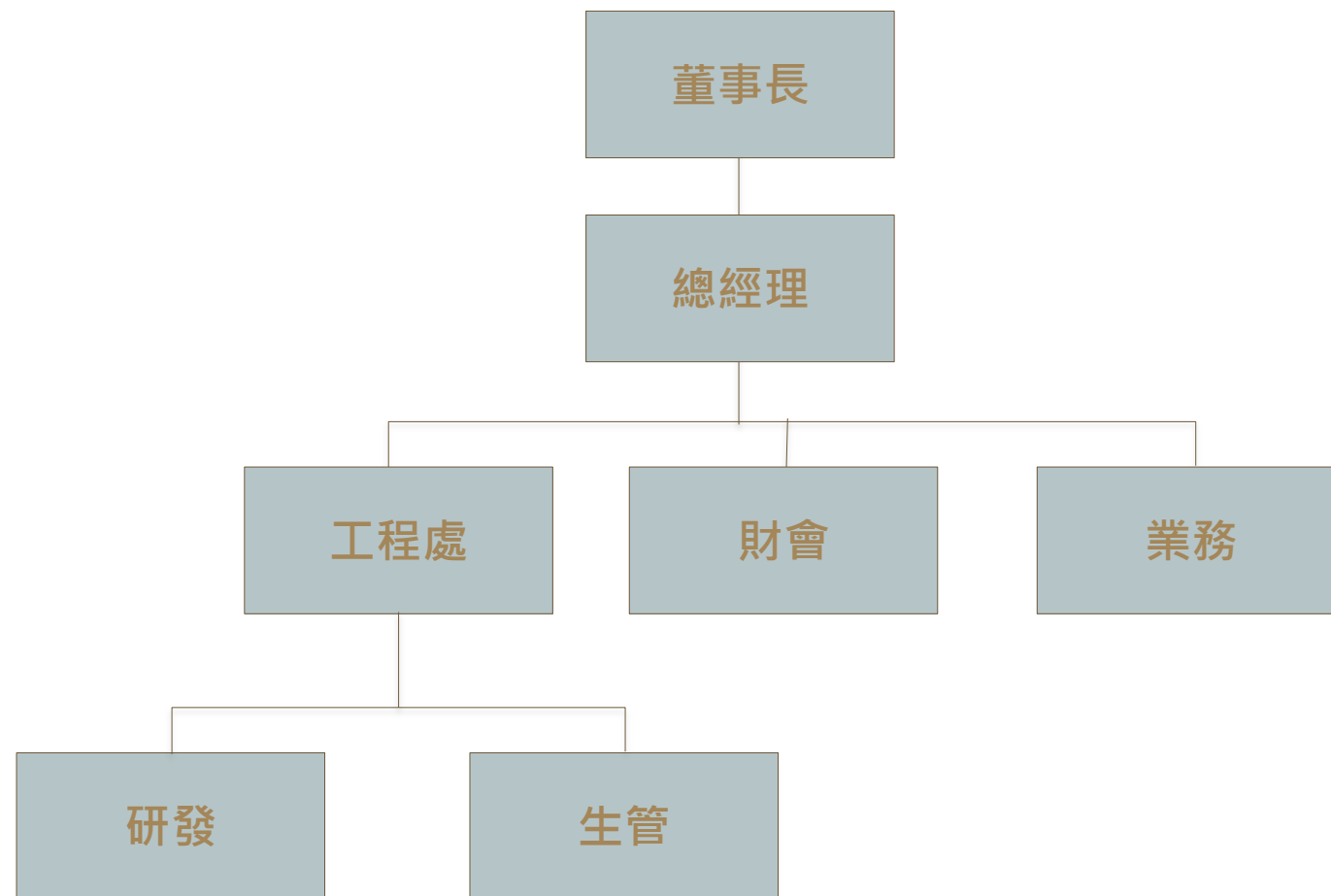
- 主要業務範圍：OFDM 無線通訊產品、數位電視調變解調變器、SOC 嵌入式系統與相關產品之設計與生產

## 公司簡介 (2/2)

和迪科技致力於開發與製造數位影音廣播設備，提供1080p高畫質視訊傳播最佳解決方案，可應用於小型視訊廣播、電子數位看板、數位監控設備等，讓客戶能以最經濟有效的方式在最短時間內佈建系統，不論是透過無線訊號或是實體線路，都能實現高畫質並且即時同步的影音傳輸。此外，利用COFDM傳輸技術開發通訊模組，其抗干擾、遠距傳輸之特性，搭建無線長距離骨幹網路，提供更穩固的無線通訊解決方案



# 公司組織



## 研發能量

和迪科技擁有豐富的數位影音處理以及無線射頻系統設計經驗，並利用聯陽半導體開發之射頻Tx/Rx IC，搭配自行開發高功率放大器，研發設計出多款數位電視調變器及無線傳輸設備。

職稱	姓名	主要學經歷
總經理	楊右宇	中原大學/資訊工程學 威盛電子工程師 雙漢科技研發部副理 海華科技工程技術部經理 和迪科技總經理
監察人	邱紹華	中原大學/ 電子工程學 精英電腦研發部資深硬體工程師 雙漢科技研發部經理 海華科技研發部經理 星雲電腦研發部經理
研發主管	王建發	台大資工系/台大資工所 威盛電子嵌入式系統開發部副理 雙漢科技研發部經理 聯陽半導體研發部處長

# EXISTING SOLUTIONS FOR LONG DISTANCE TRANSMISSION?

WIFI ?

3G/4G ?

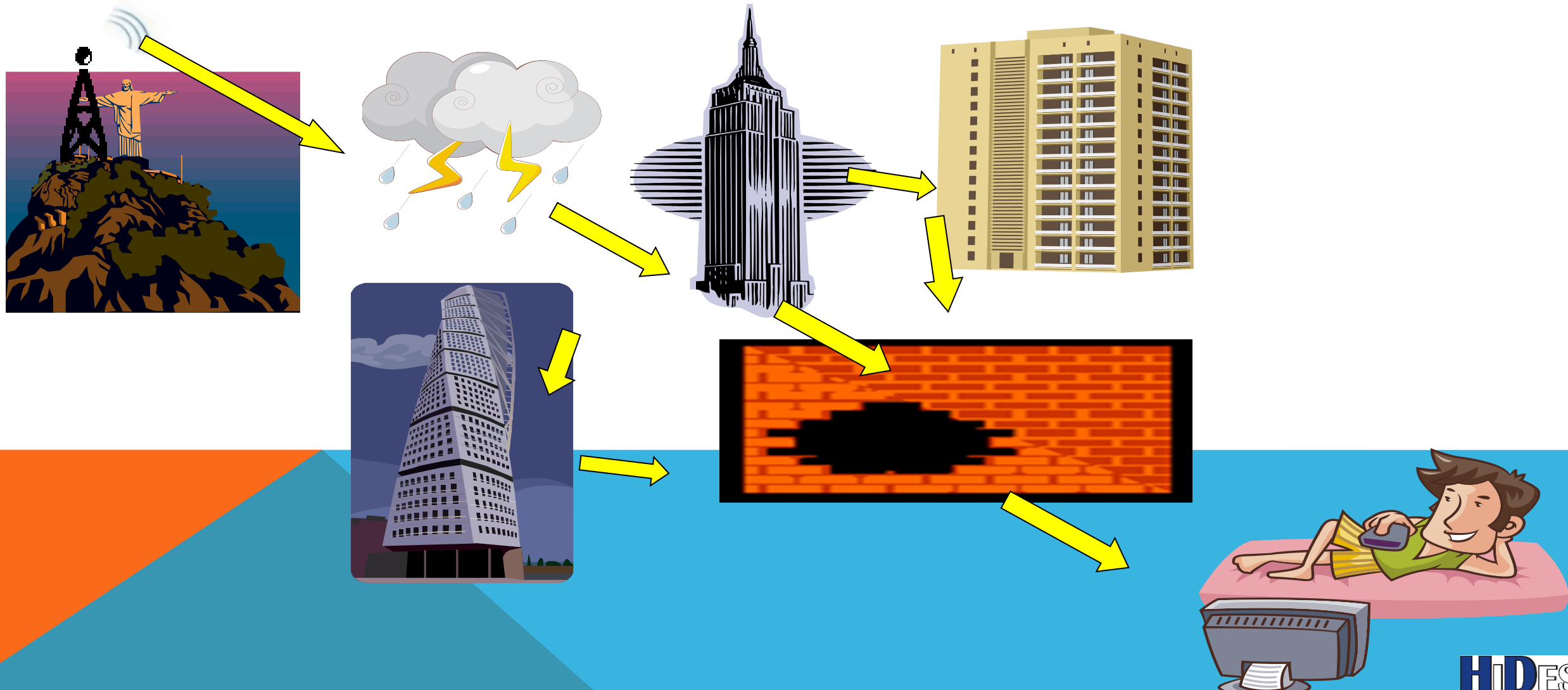
Wireless Regional Area Networks (WRAN)/TDMA ?

Satellite up-link/down-link?

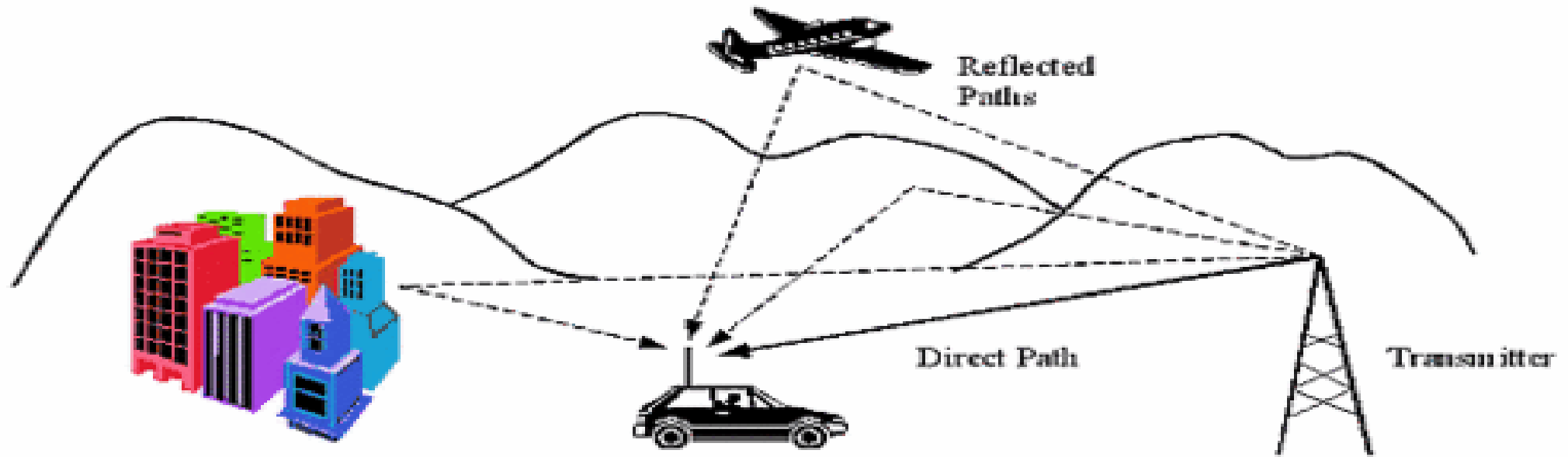
Military solution?

# THE MOST ROBUST AV TRANSMISSION PROTOCOL ISDB-T & DVB-T

**THE PROTOCOL BORN FOR LONG RANGE HD**



# MOBILITY AND MULTI-PATH ECHO'S





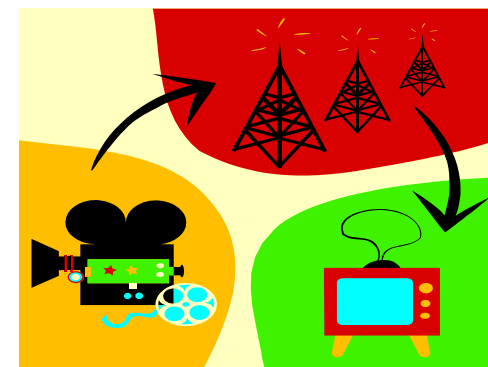
# SPEC. OVERVIEW

**Supports up to 32 Mbps rates over coax/twisted pair/non-twisted pair/air**

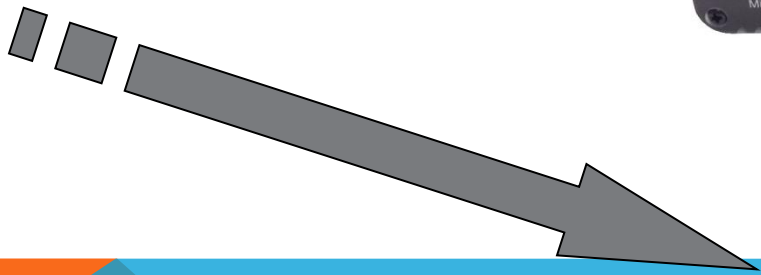
**Frequency Bandwidth 1, 1.5, 2, 2.5, 3, 4, 5, 6, 7, 8 MHz**

**Frequency Band: 100MHz ~ 5.8G and above**

**Compliant to EN300 744 (DVB-T) and ARIB STD-B31(ISDB-T) digital TV standard.**



# LONG RANGE HD VIDEO TRANSMISSION HV-320 AND HV-330

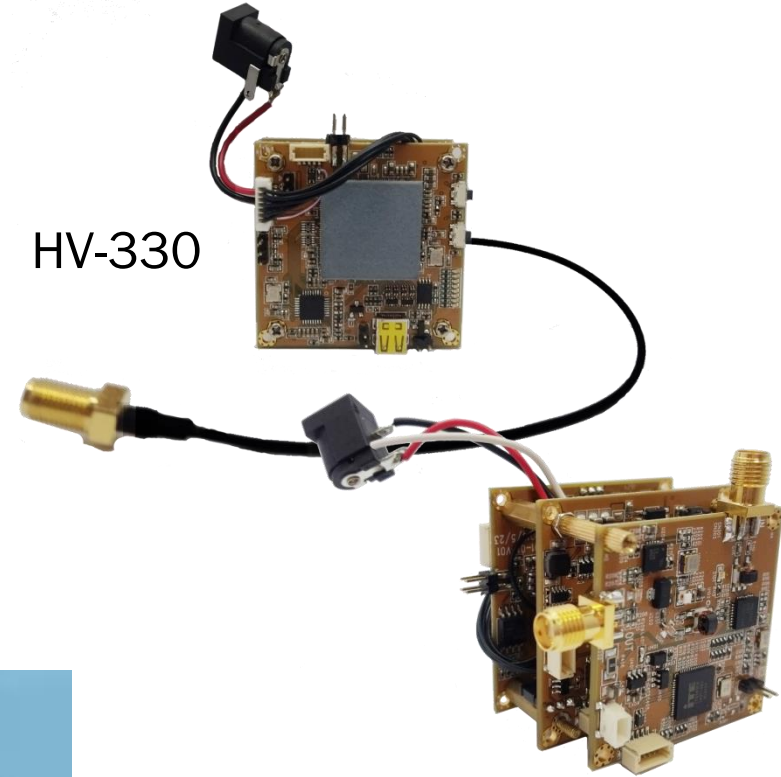


**0.5 ~ >>300 KM**

HV-320



HV-330



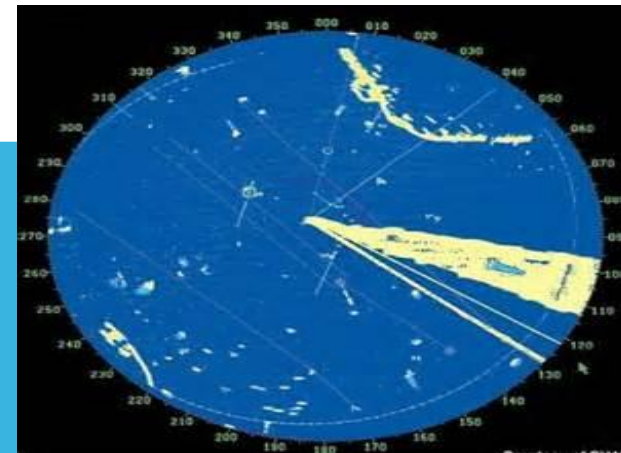
# RACING SPORTS



# APPLICATION: ENERGY



# APPLICATION: LIVE VIDEO SHARING



# SOMETHING, YOU MAY NOT KNOW





## FACTS ABOUT THE FLIGHT:

**1W 70cm amplifier** were part of a payload flown on a surplus weather balloon.

It reached a burst altitude of **98,000 feet** and maximum distance from the launch site was **39 miles**.

The transmit antenna was a 70cm 'Wheel' design on the bottom of the package and receive antennas were 11 element yagi's with pre amps.

We were able to receive and record live **QPSK, 4MHZ, 720P HD video** during the flight from lift off until approximately 1 1/2 minutes before landing, a distance of 39 miles from the airport.

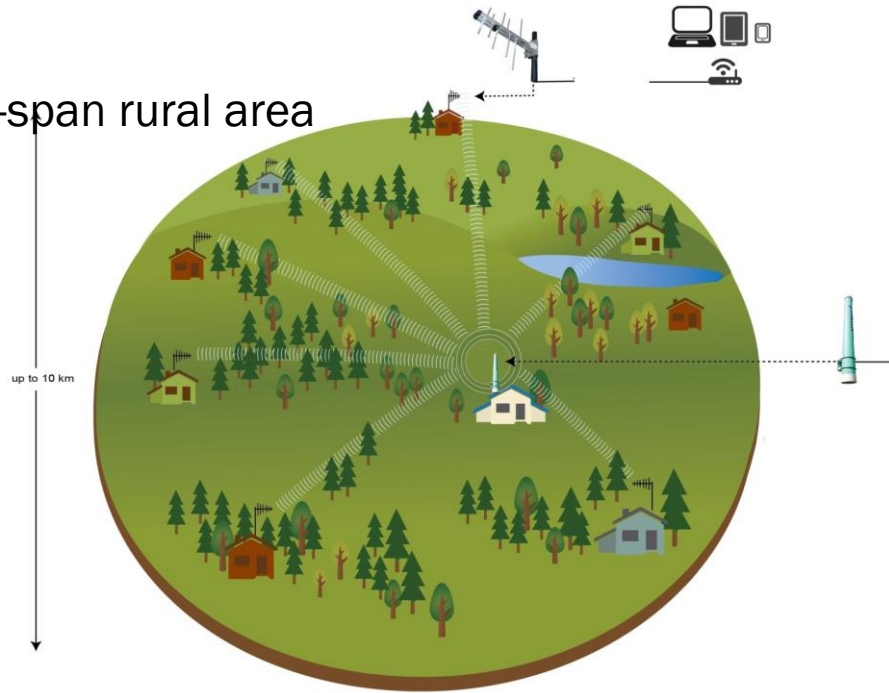


# LONG RANGE ETHERNET EXTENDER: EOA-200

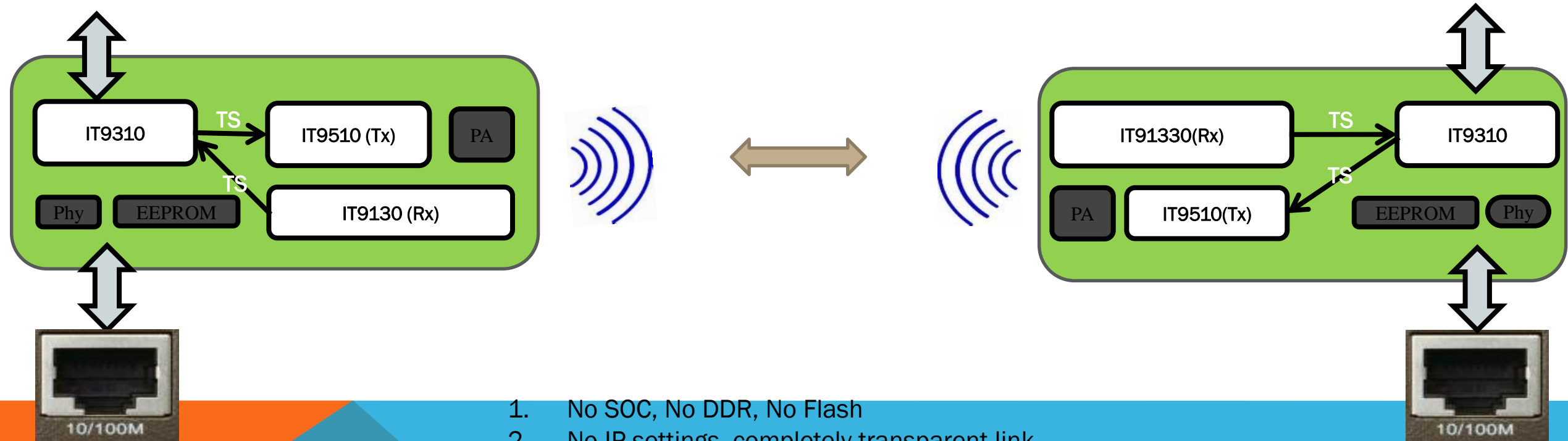
EOA-200



Internet Access in Wide-span rural area



# TRANSPARENT ETHERNET LINK(EOA) IT9310+IT9130+IT9510

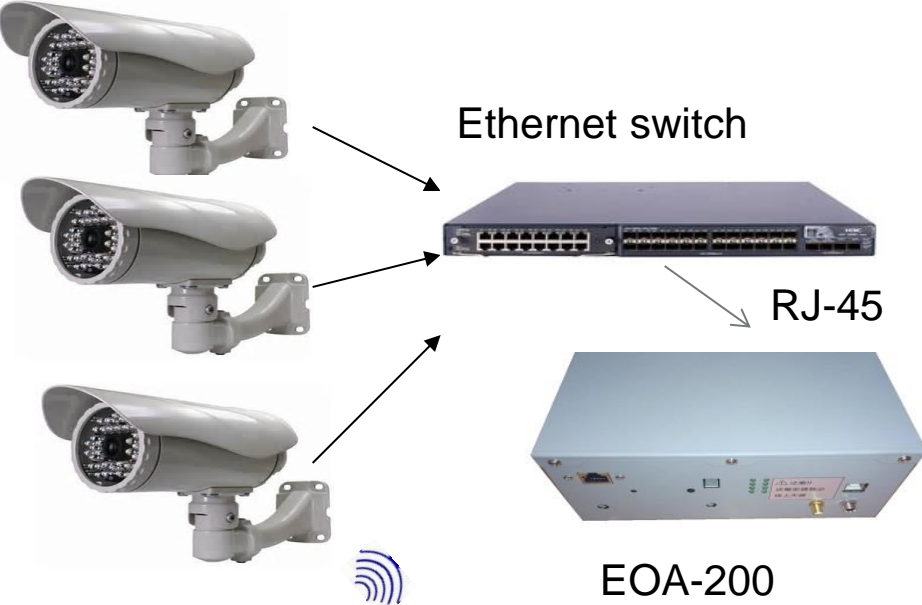


1. No SOC, No DDR, No Flash
2. No IP settings, completely transparent link
3. EEPROM boot (<3 s)
4. Two RF Channels, Full-duplex
5. Simultaneous Transparent UART port x1
6. 26Mbps(U) and 26 Mbps(D) throughputs
7. P2P only

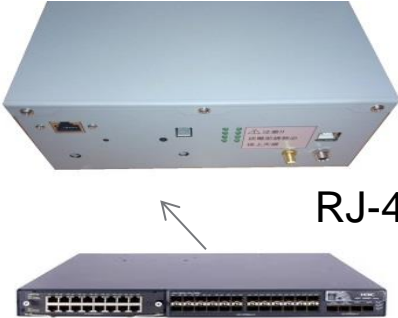


# LONG RANGE WIRELESS SURVEILLANCE SYSTEM

IPCAM



EOA-200



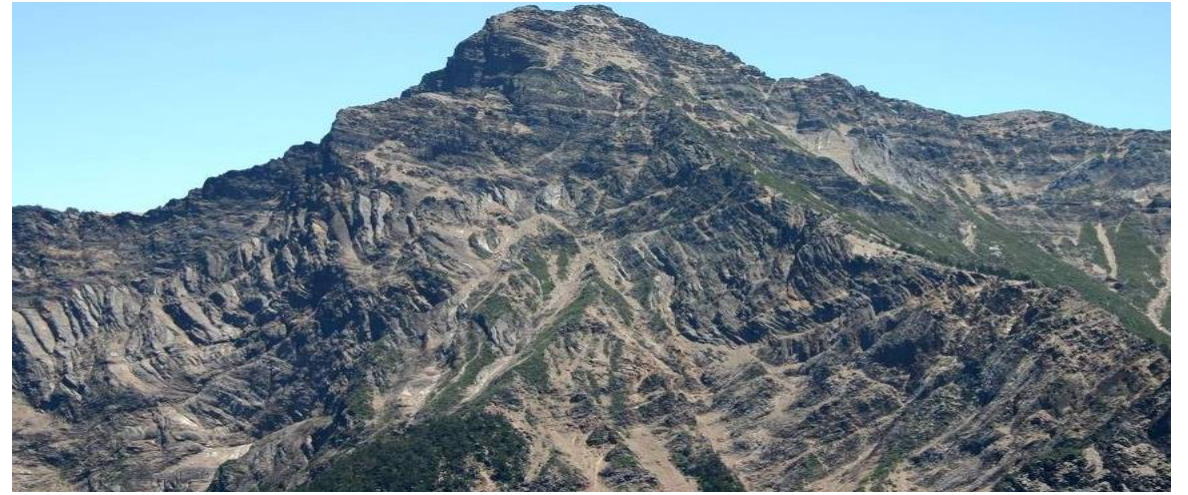
RJ-45

Ethernet switch

NVR/CMS



# APPLICATION: 消防救災



# ETHERNET EXTENDER



EOA-200



EOA-200



Android/iOS/Windows  
platforms



# APPLICATION: INTER-SHIP/SHIP-TO-LAND A/V/DATA COMMUNICATION

