

The Hunt for Sporadic E.....

Group 1:

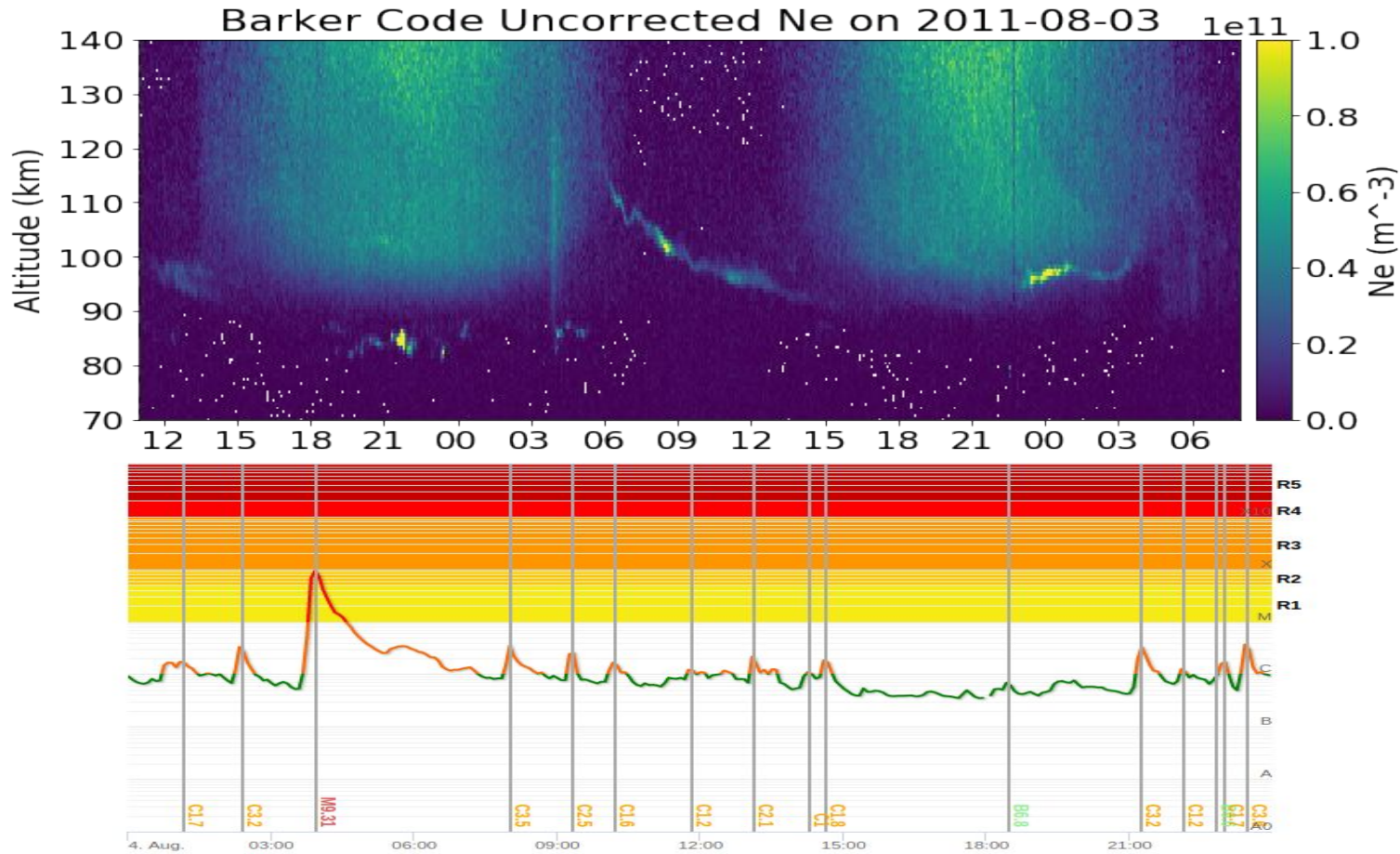
Meghan LeMay

Mahith Madhanakumar

Bidyut Roy

Sporadic E - what's and why's?

- Narrow layers of metallic ion plasma in the ionospheric E region at altitudes usually between 90 and 120 km.
- Physics relies on “windshear theory” which is now widely accepted as the mechanism responsible for their formation.
- Can happen at almost any time; it does, however, display seasonal patterns.
- Sporadic E activity peaks predictably in the summertime in both hemispheres.

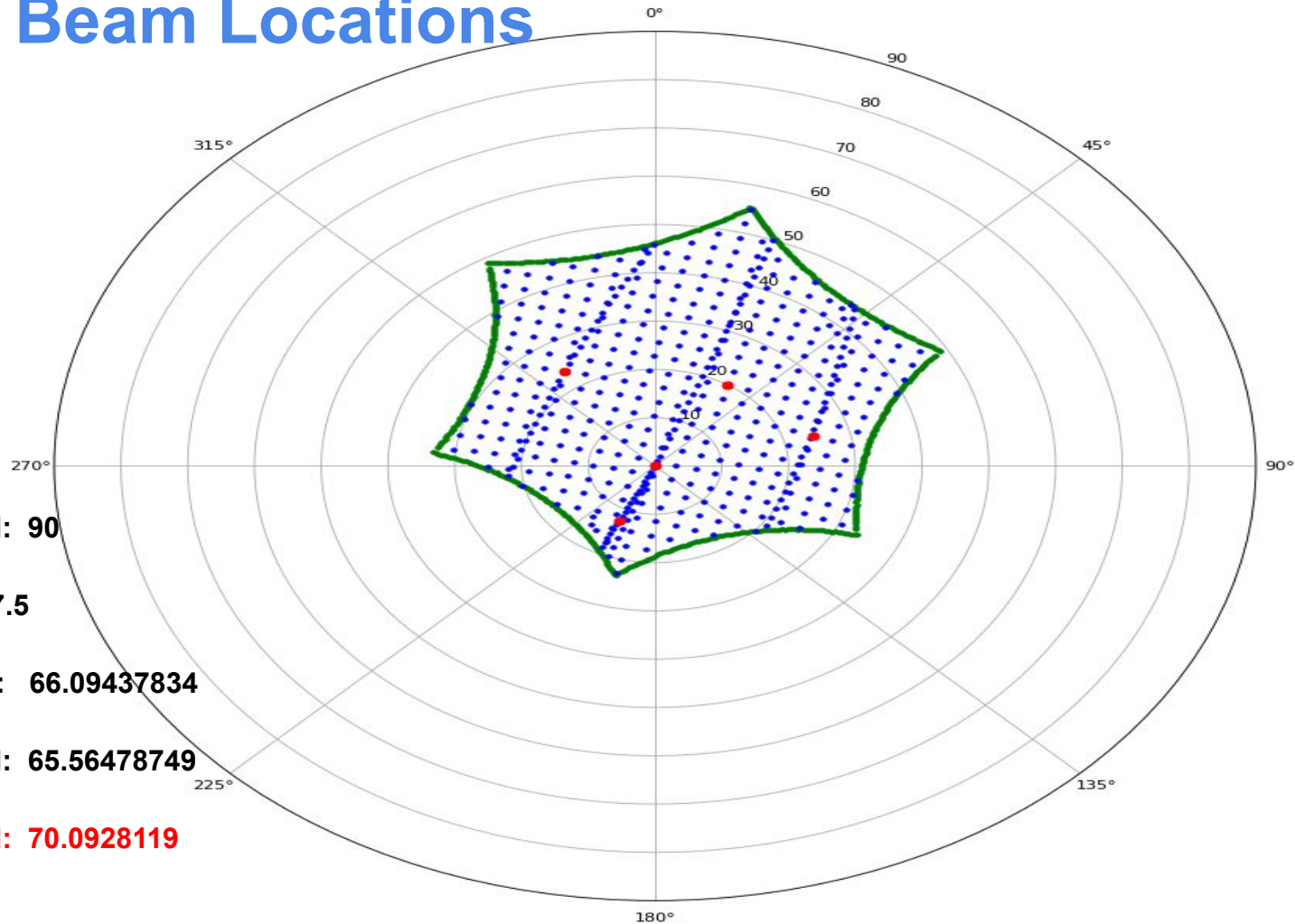


<https://agupubs.onlinelibrary.wiley.com/doi/pdf/10.1029/2007JA012322>

- Goal = see Sporadic E !!
- Chose the **MSWinds26.v03** experiment and an extra beam **64931**.
 - Focus on D and E region(where Sporadic E are usually found).
 - Used Barker code which is best suited for D and lower E measurements.
 - Experiment ran from 01:00 - 03:00 UTC
- Barker Code: Barker codes are binary numbers using two to 13 bits and have unique auto-correlation functions.
- Sidelobe ratio = -22.3dB
- 15 s, 1 min, 5 min integration times
- Alternating code:
 - 10, 5 min integration times
- Long pulse:
 - 1 min, 5 min integration times

Barker Code 2	10
Barker Code 3	110
Barker Code 4	1011
Barker Code 5	11101
Barker Code 7	1110010
Barker Code 11	11100010010
Barker Code 13	1111100110101

MSWinds26 Beam Locations



64016 az: 14.03624347 el: 90

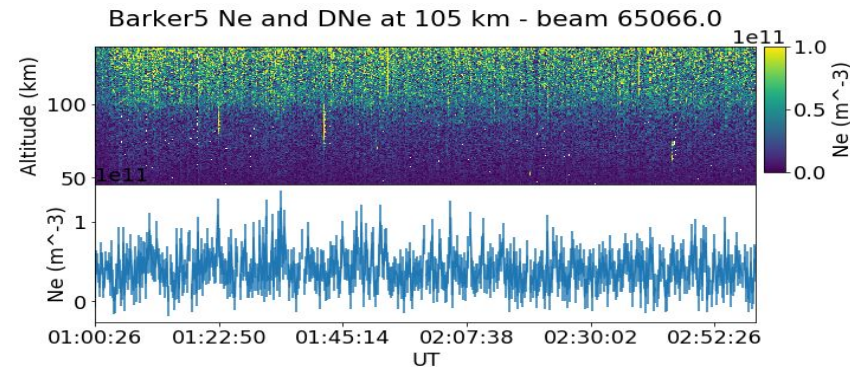
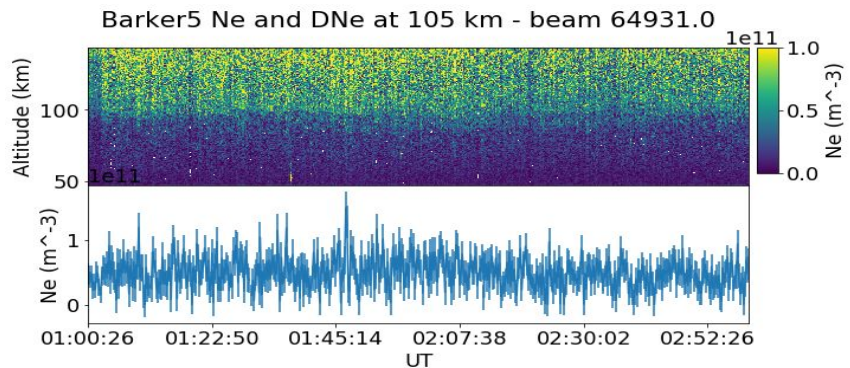
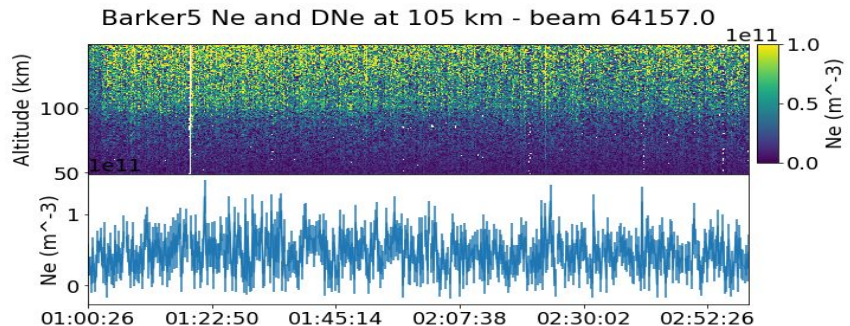
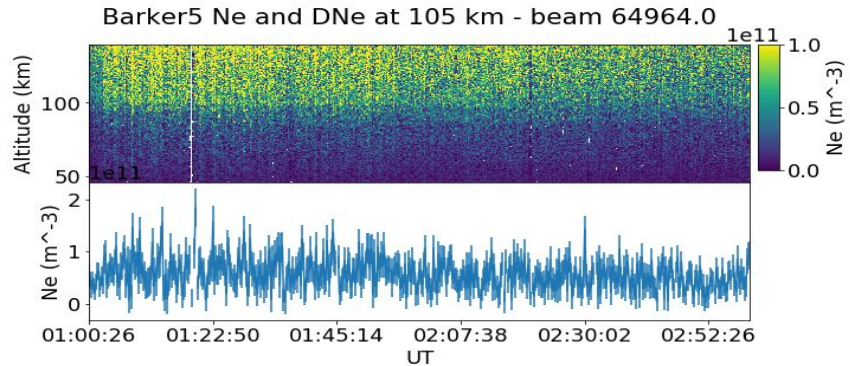
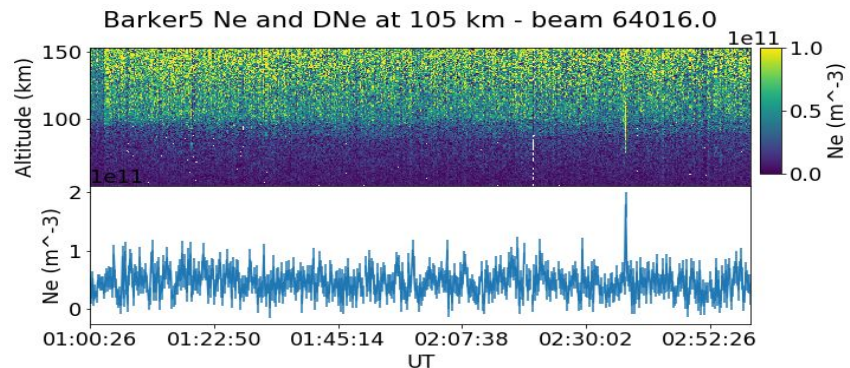
64157 az: -154.3 el: 77.5

64964 az: -34.6912402 el: 66.09437834

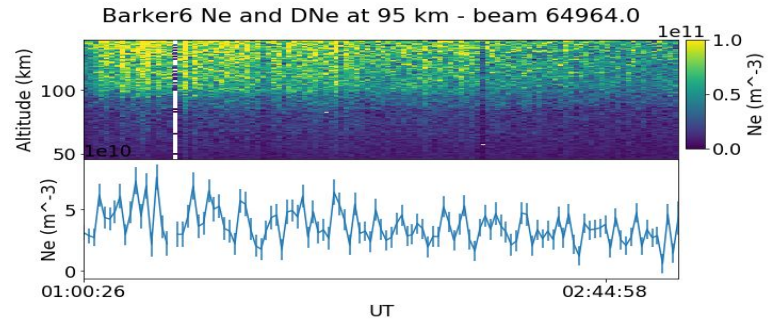
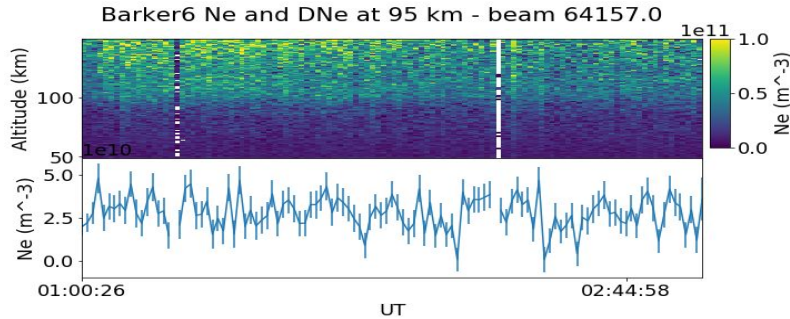
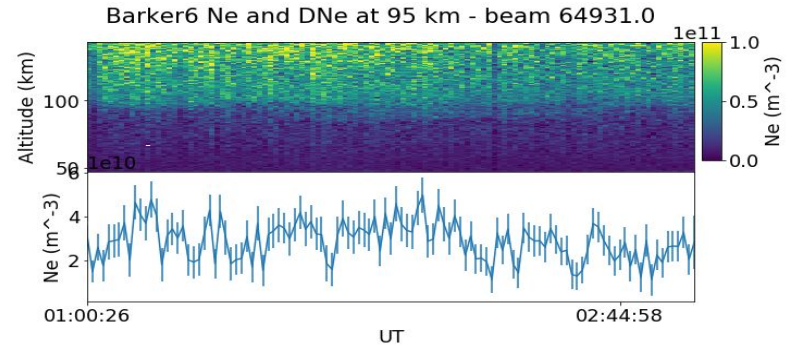
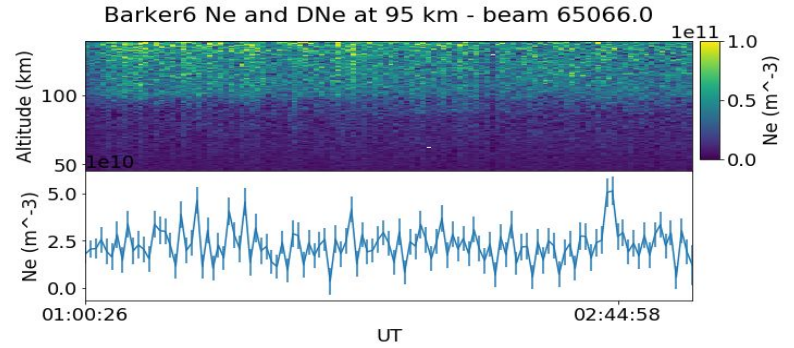
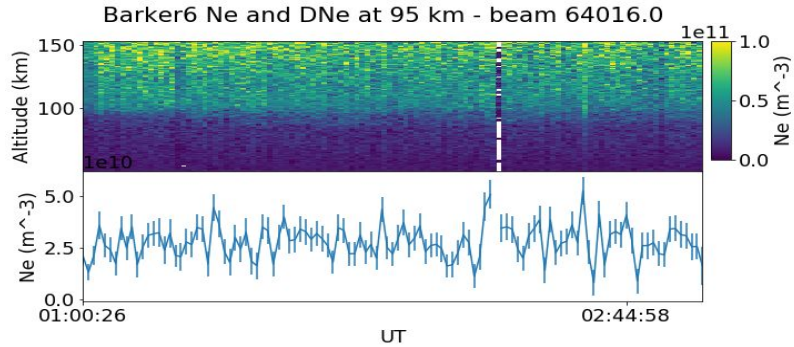
65066 az: 75.03447518 el: 65.56478749

64931 az: 32.87777373 el: 70.0928119

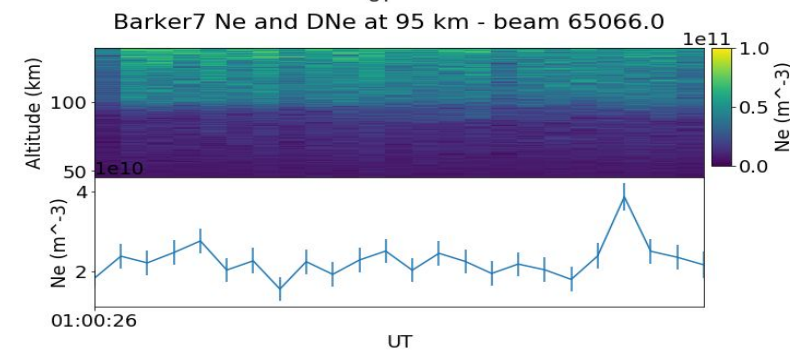
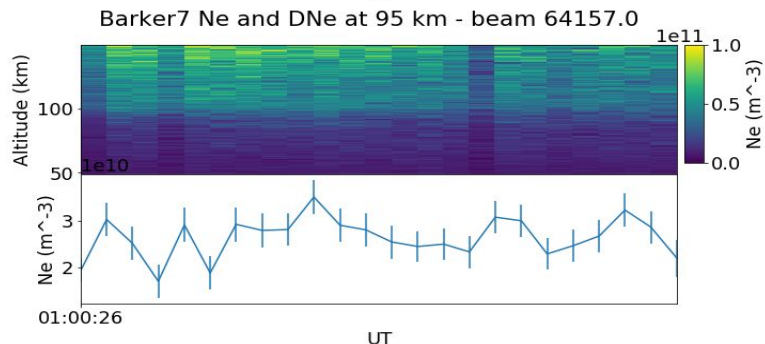
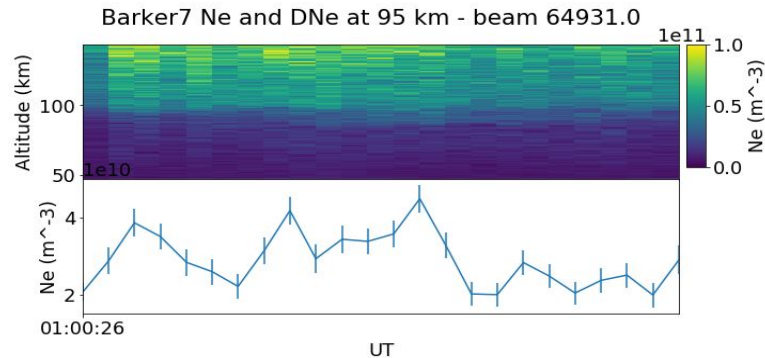
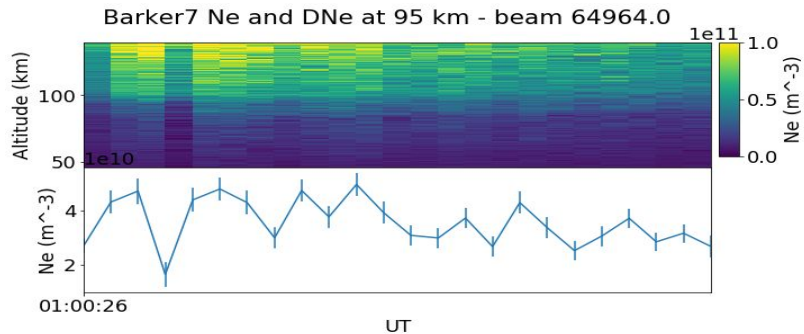
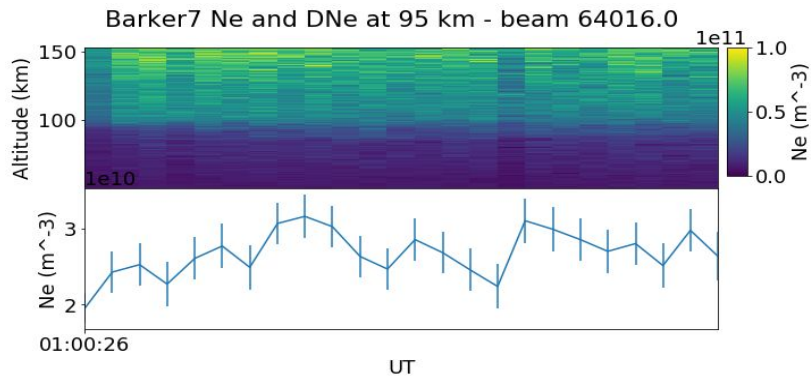
Electron density profile and the associated error at 105Km (for Barker5) - 15s integration



Electron density profile and the associated error at 95Km (for Barker6) - 1min integration

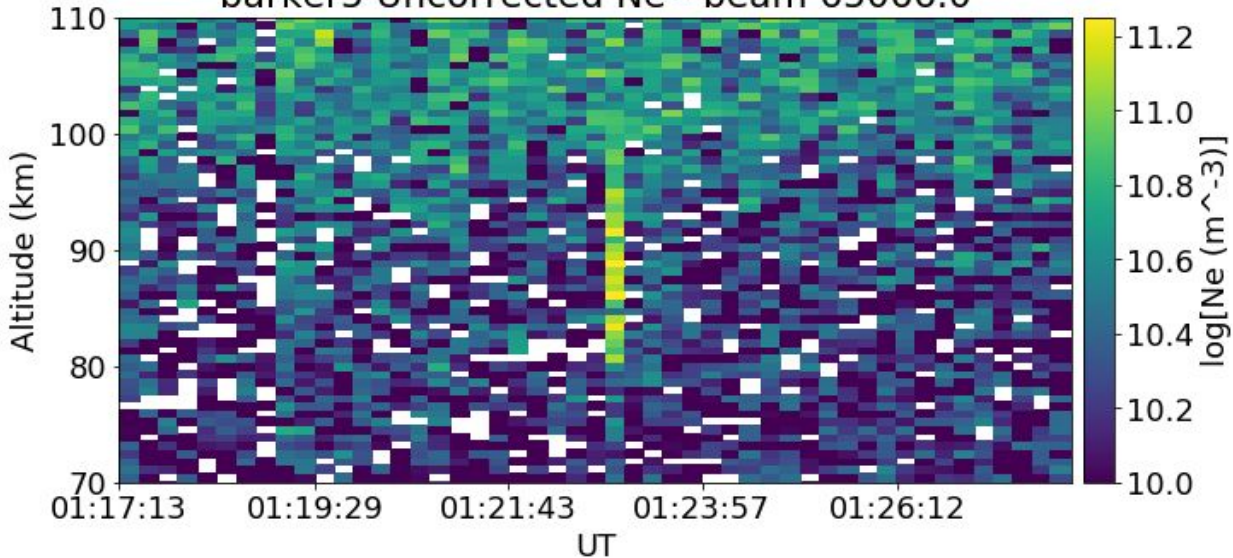


Electron density profile and the associated error at 95Km (for Barker7) - 5 min integration



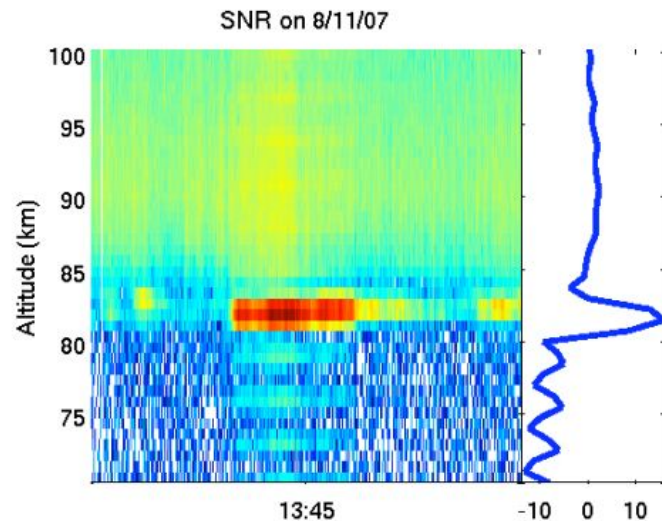
Meteor! - between 80 and 100 km which is where we expect it

barker5 Uncorrected Ne - beam 65066.0



-Can see the side lobes of the 13 baud barker code.

-Chau and Varney - CEDAR 2009

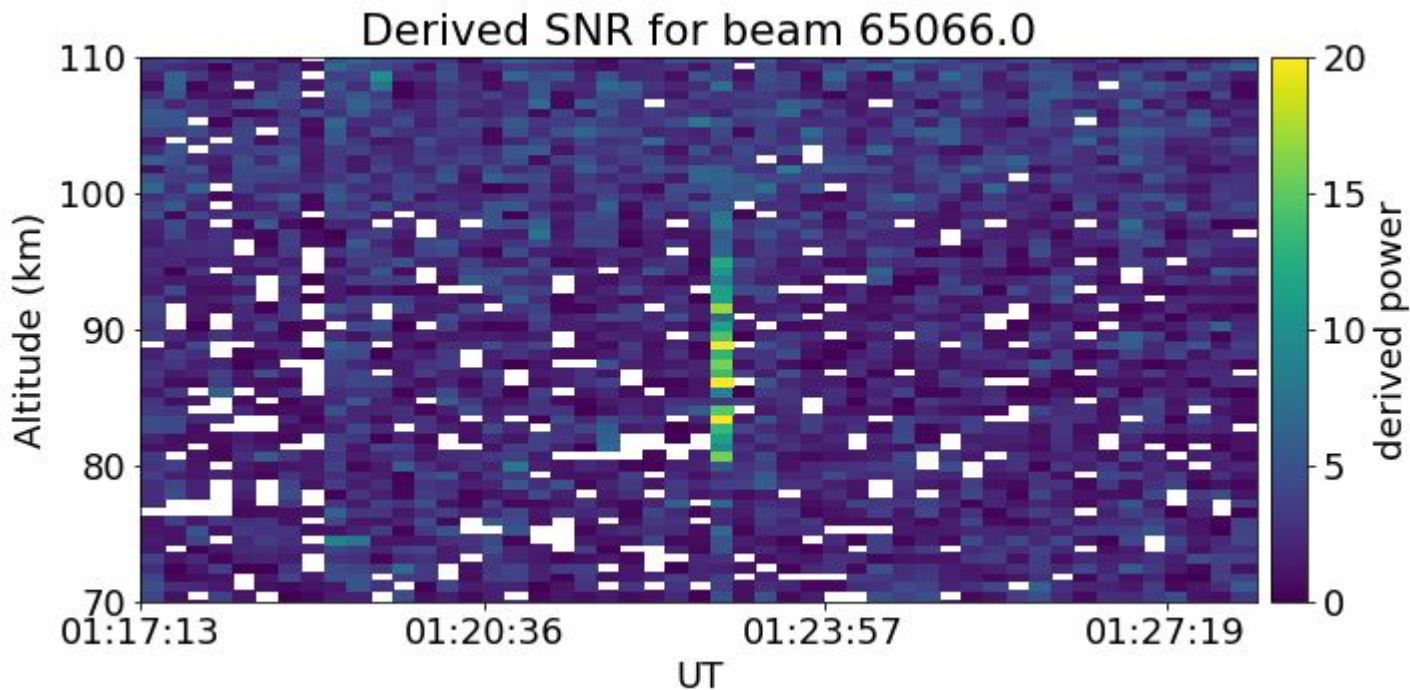


ISR equation for received power:

$$P_r = \frac{P_t \tau_p}{R^2} K_{sys} \frac{N_e}{(1 + k^2 \lambda_{De}^2) (1 + k^2 \lambda_{De}^2 + T_e / T_i)}$$

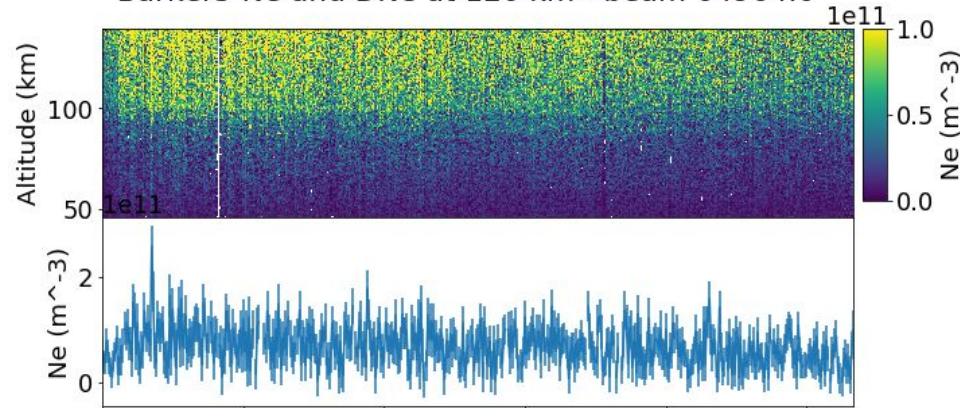
$$\lambda_{De} = \sqrt{\frac{\epsilon_0 k_B T_e}{e^2 N_e}} \quad k = \frac{4\pi}{\lambda_{Tx}} \quad R = \text{Range} \quad \tau_p = \text{Pulse Length (s)}$$

Barker code is symmetric

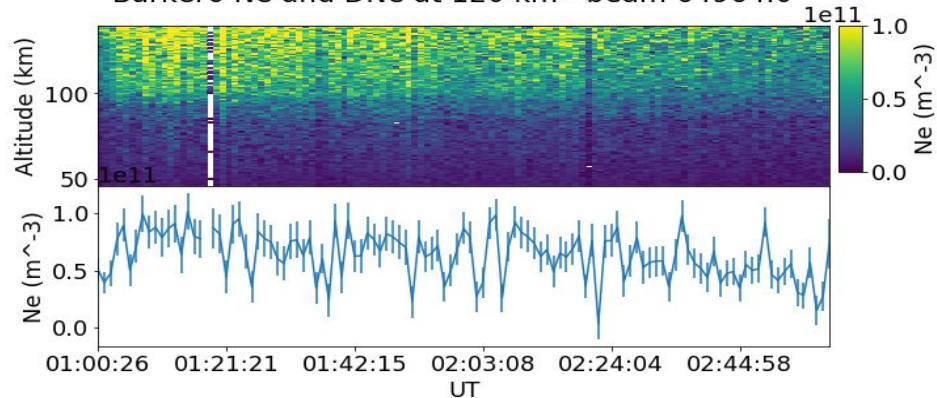


Beam with enhanced density comparison - beam 64964 - beam 3 - error at 120 km center of enhanced density

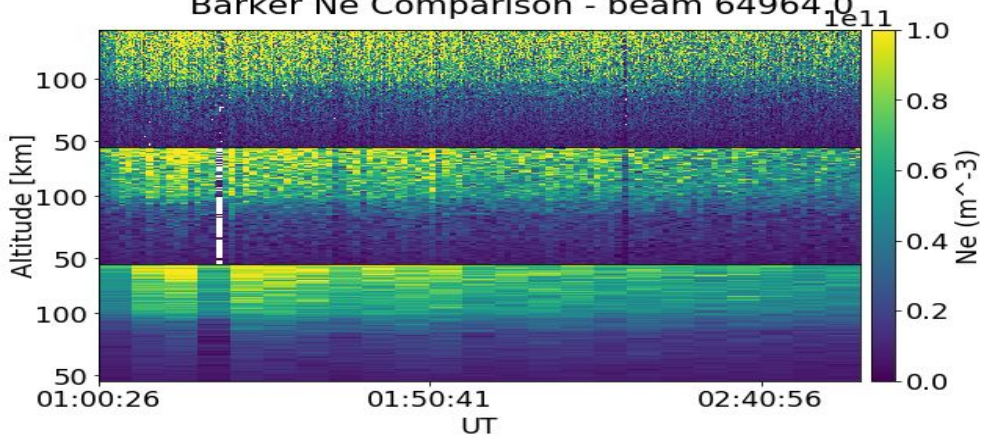
Barker5 Ne and DNe at 120 km - beam 64964.0



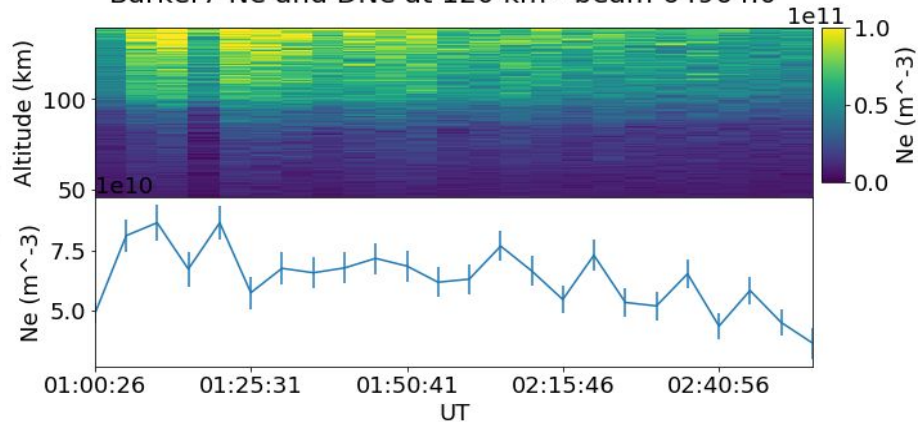
Barker6 Ne and DNe at 120 km - beam 64964.0



Barker Ne Comparison - beam 64964.0

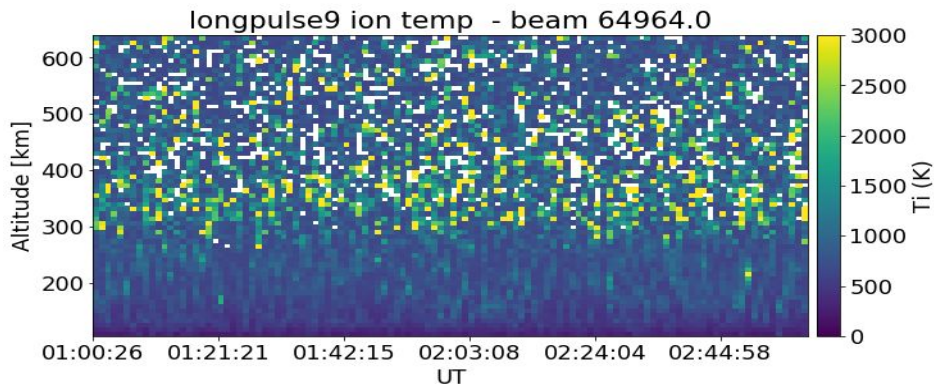
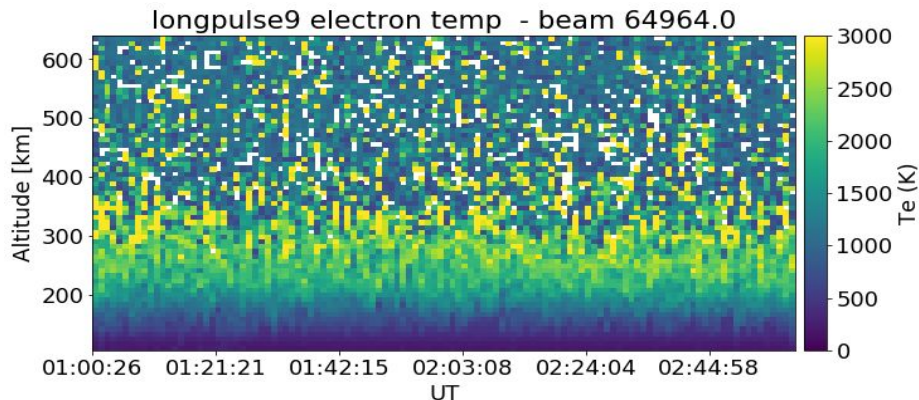
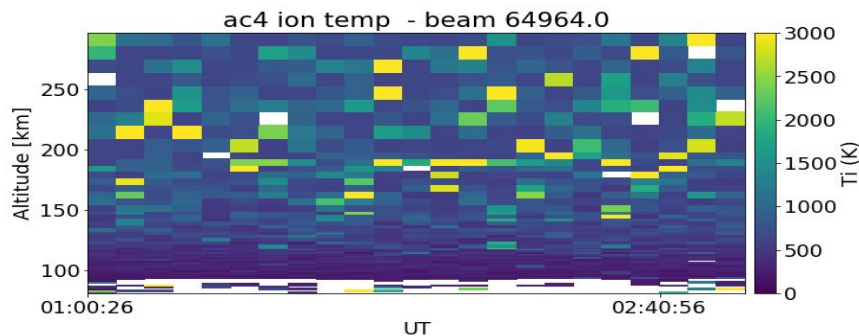
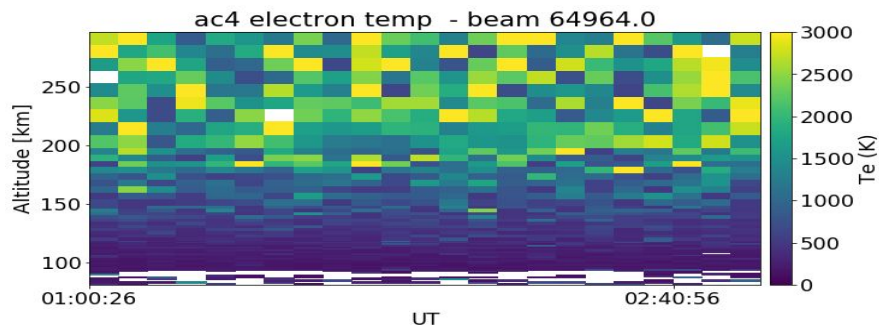


Barker7 Ne and DNe at 120 km - beam 64964.0



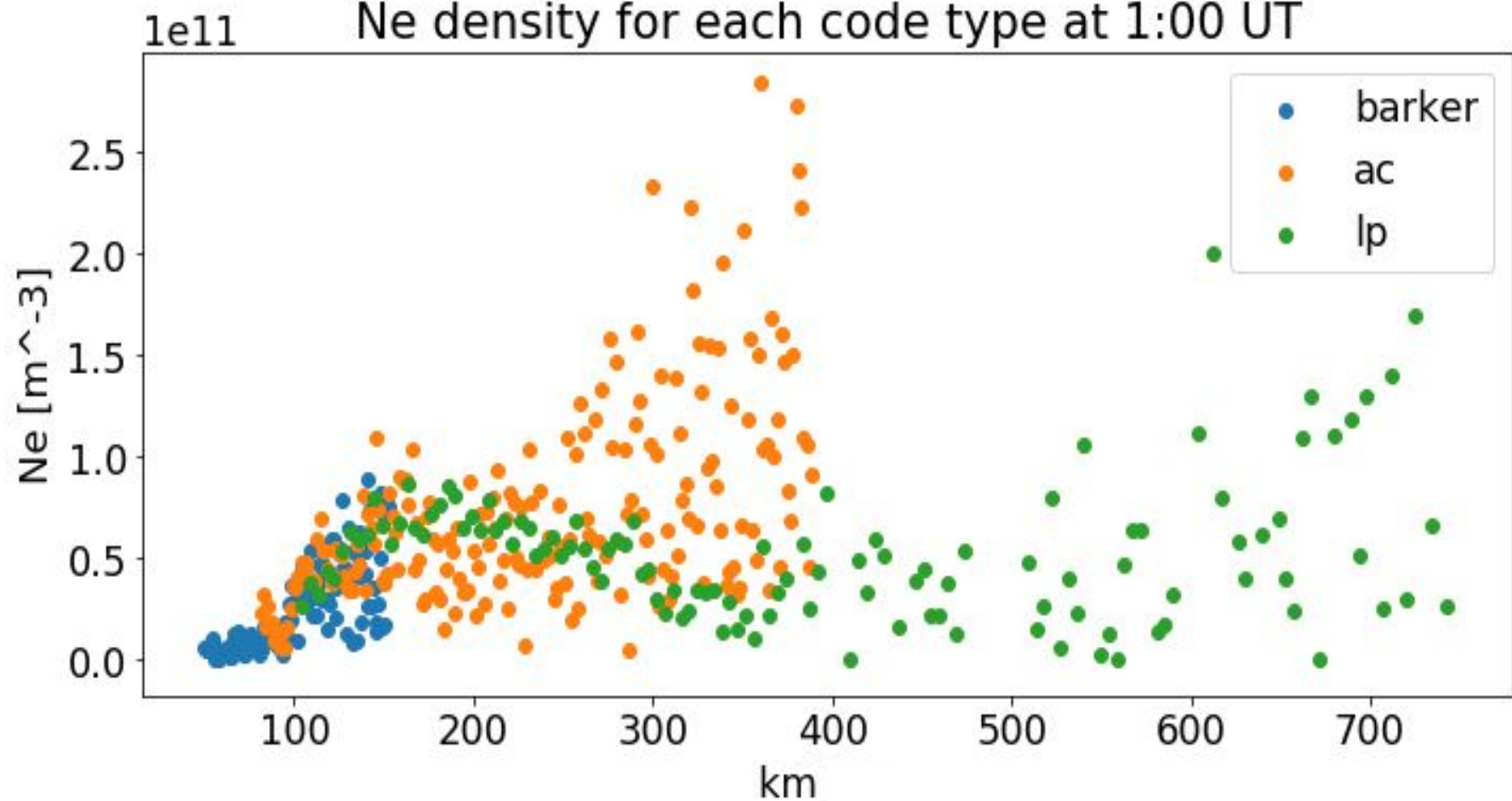
For Future: Calculate collision frequency in enhanced region

1. Determine which pulse should be used to obtain T_e and T_i



2. Calculate lat/lon of T_e and T_i using az/el
3. Input parameters into flipchem

Ne density for each code type at 1:00 UT



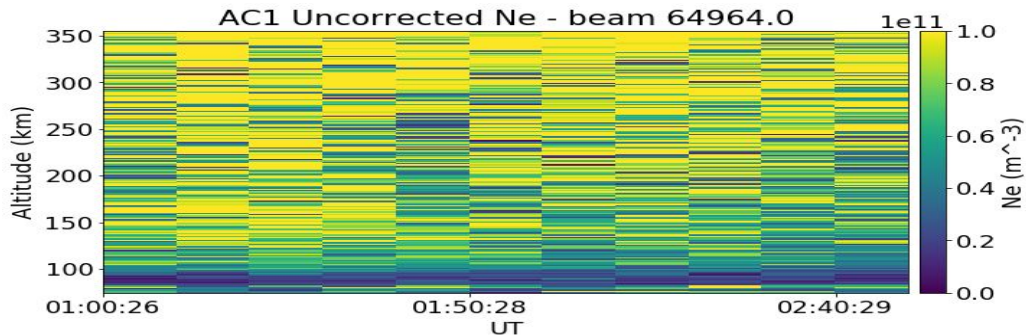
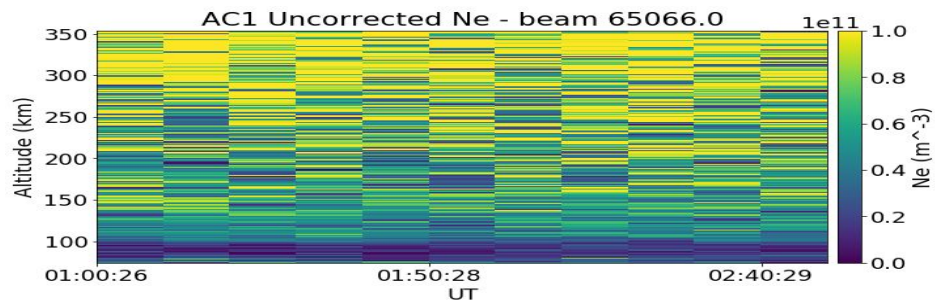
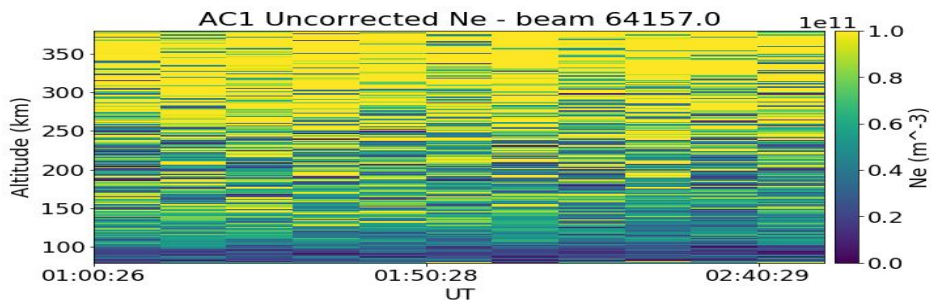
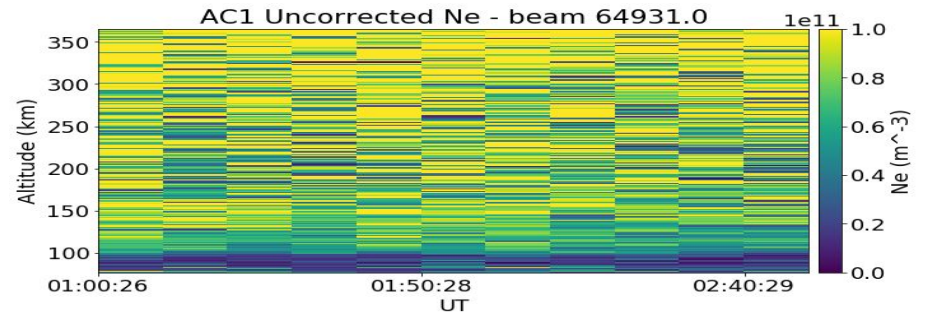
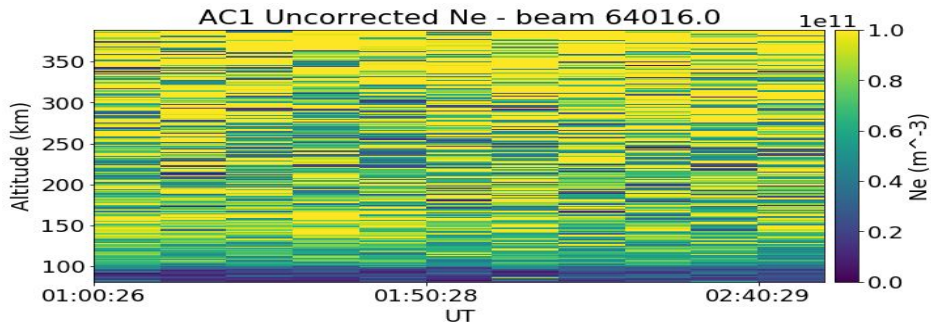
"WE WOULD RATHER HAVE QUESTIONS THAT CAN'T
BE ANSWERED THAN ANSWERS THAT CAN'T BE
QUESTIONED"

Meghan LeMay

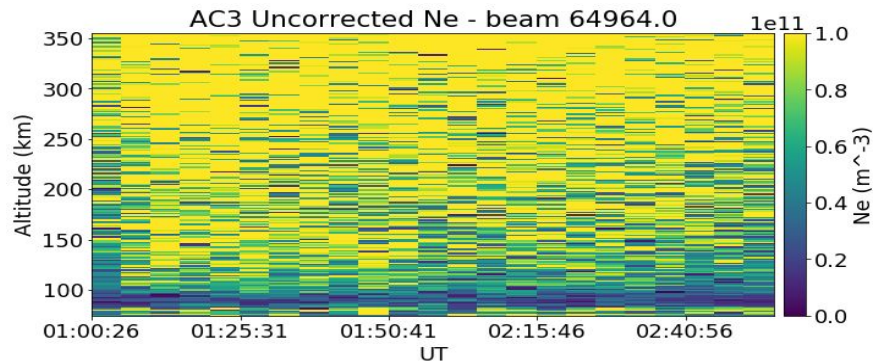
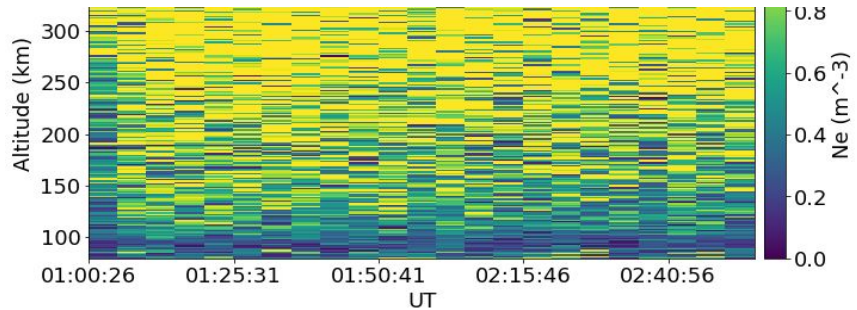
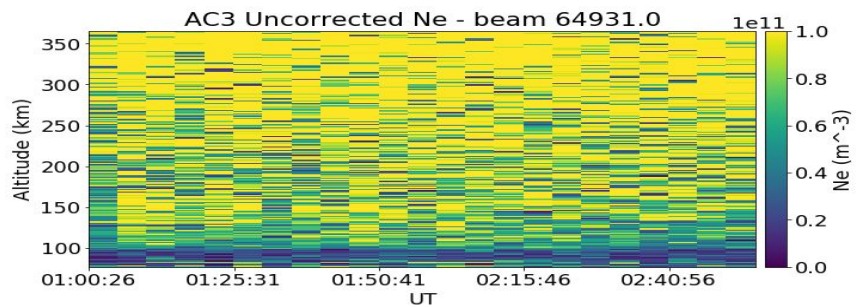
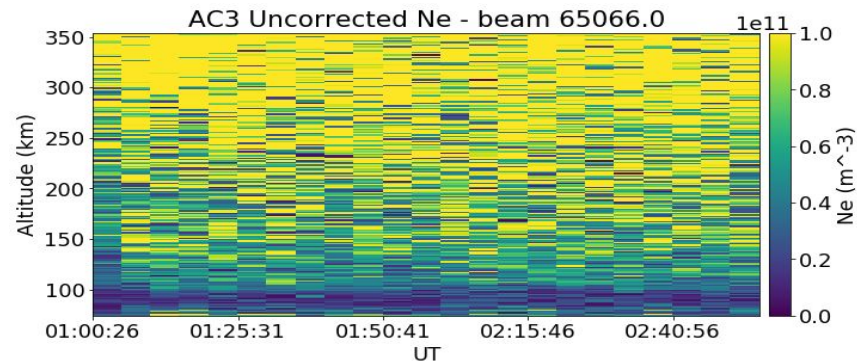
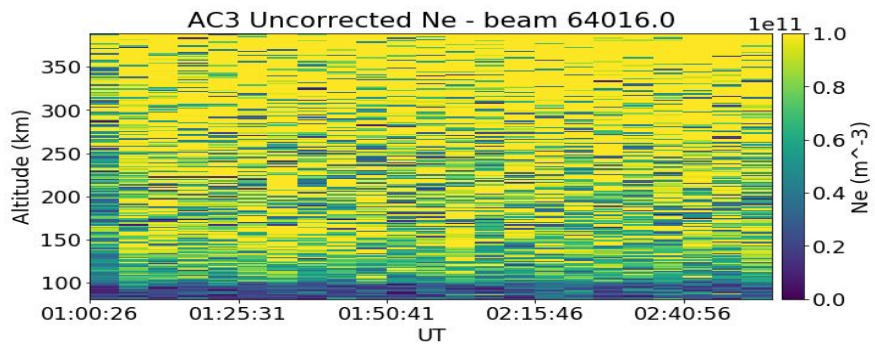
Bidyut Roy

Mahith Madhanakumar

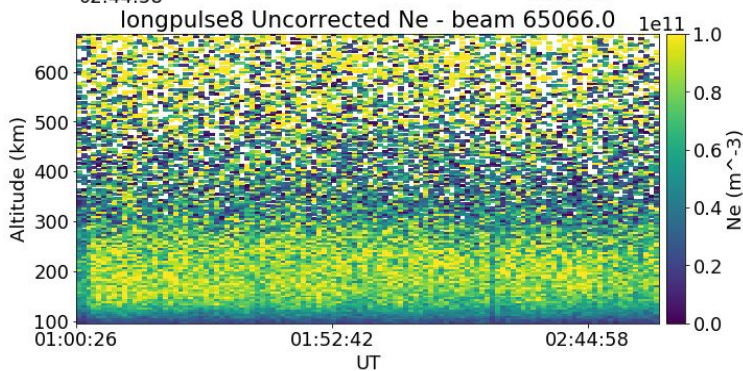
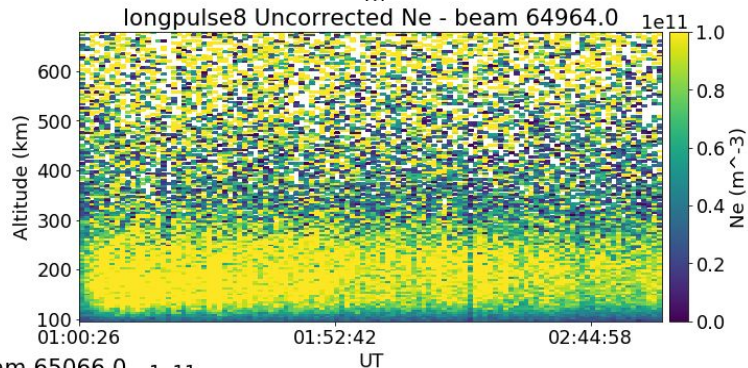
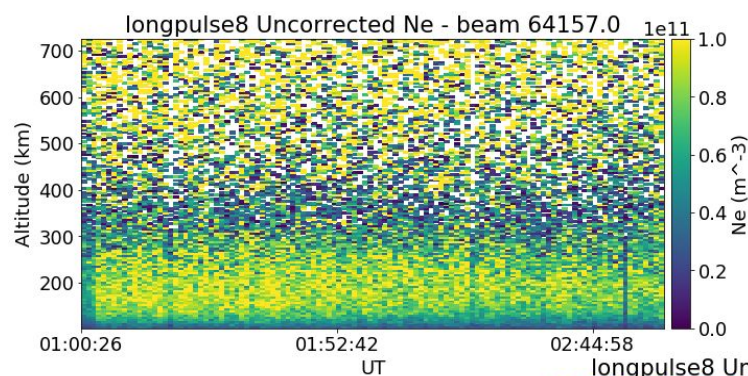
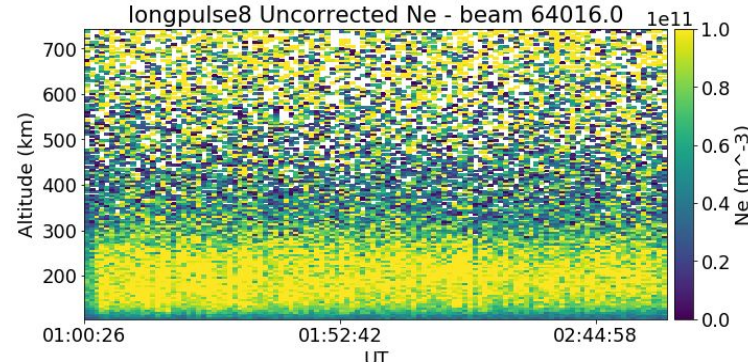
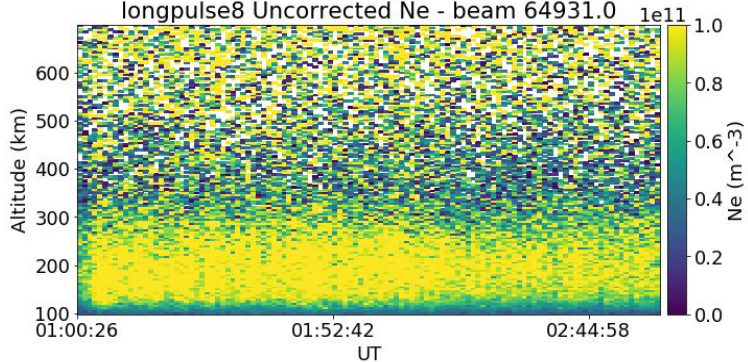




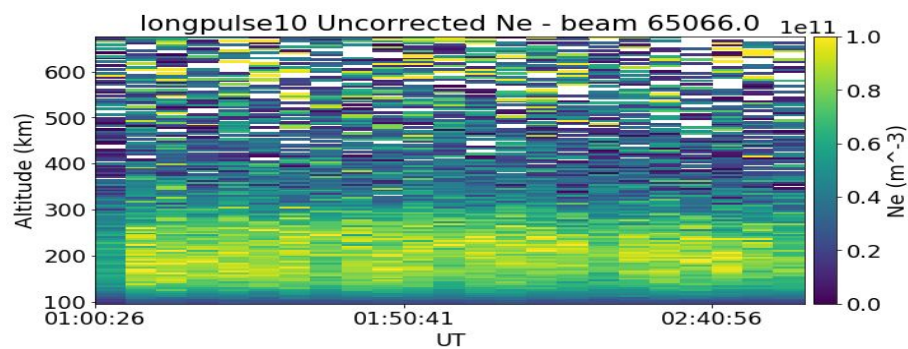
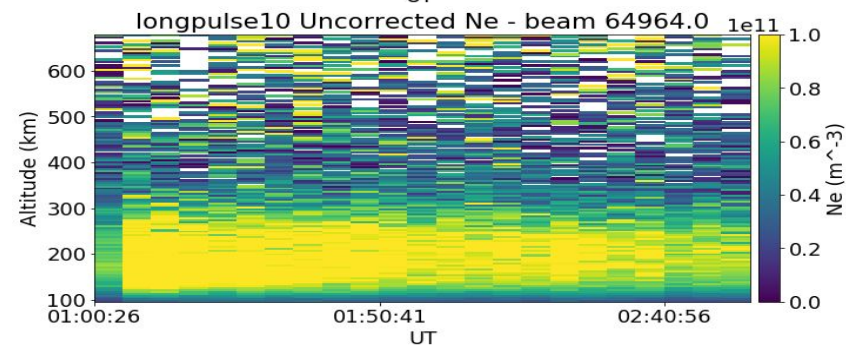
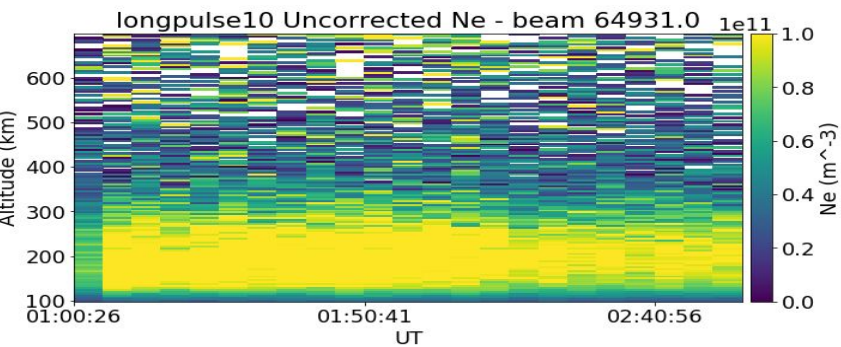
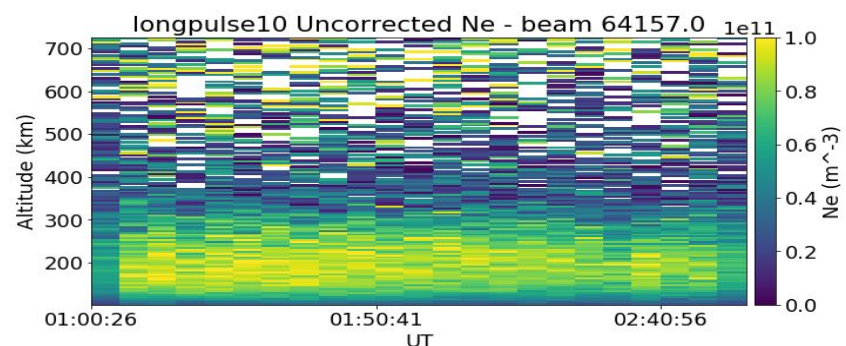
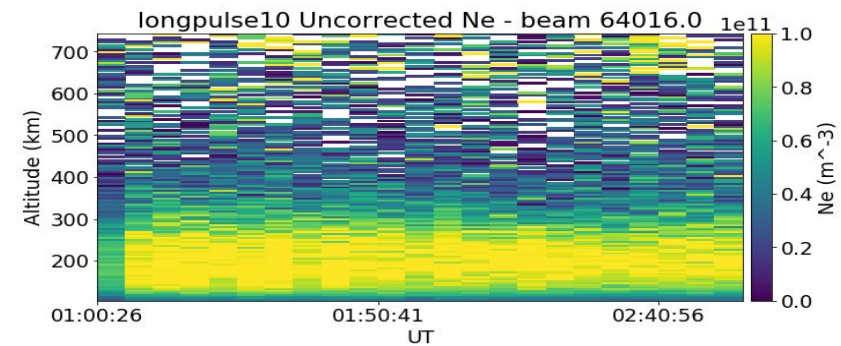
Alternating code 1
Integration = 10 mins



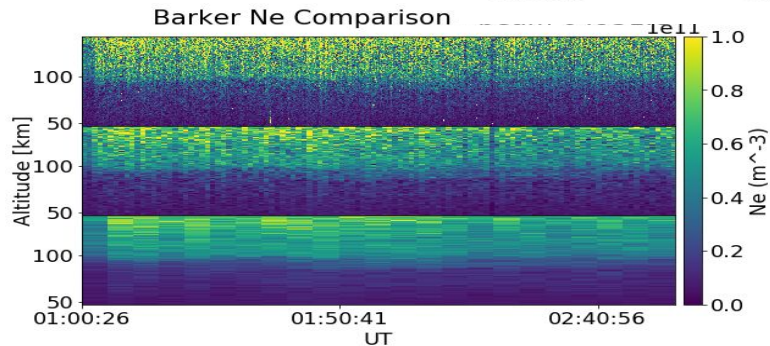
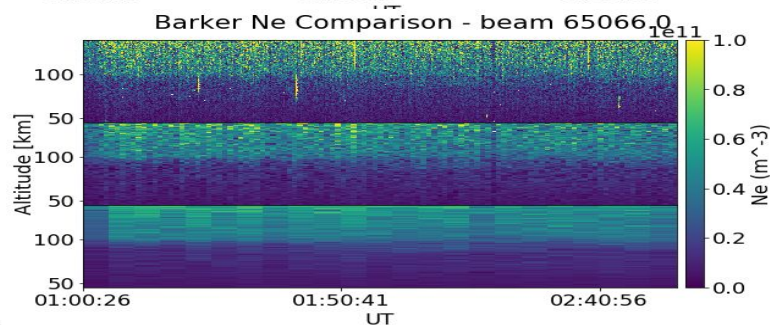
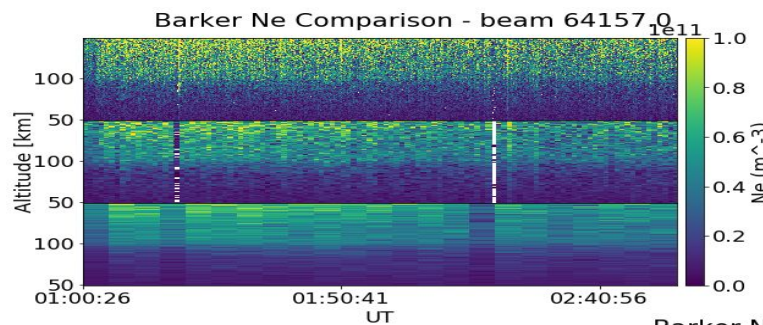
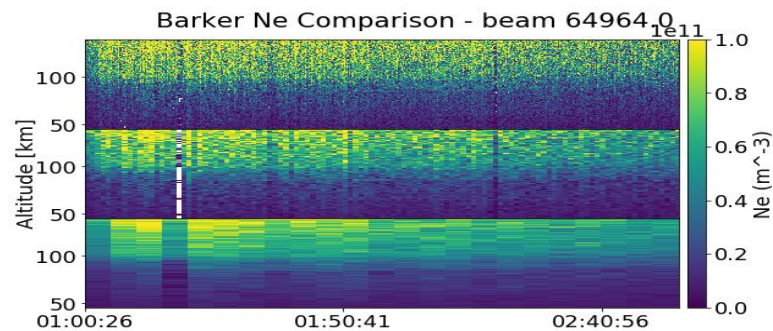
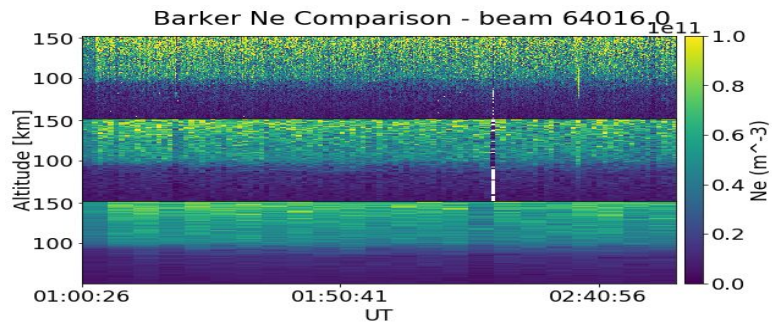
Alternating code 3 -
integration = 5 mins

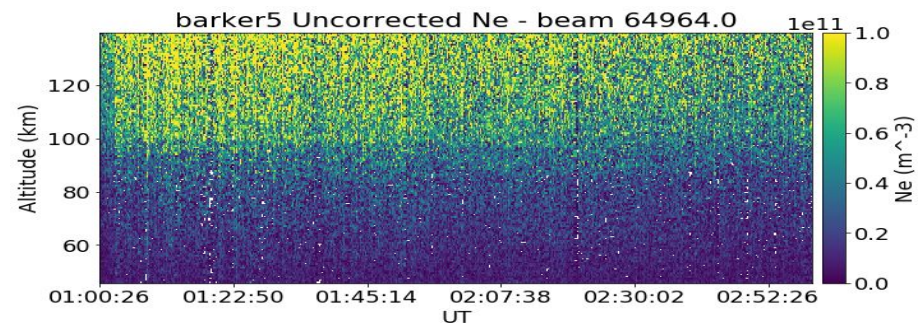
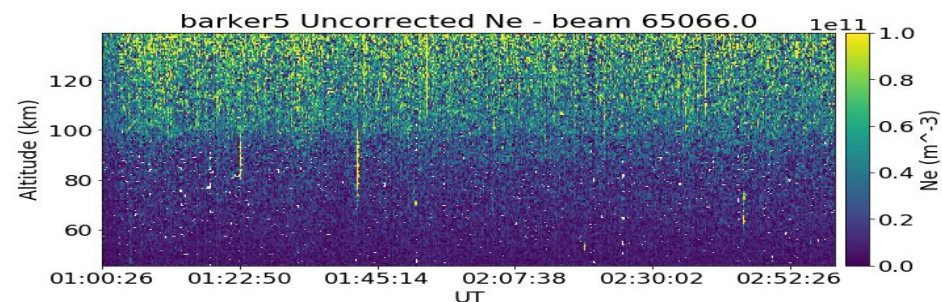
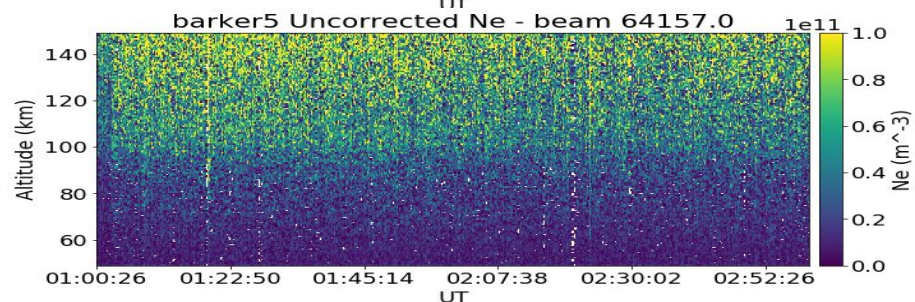
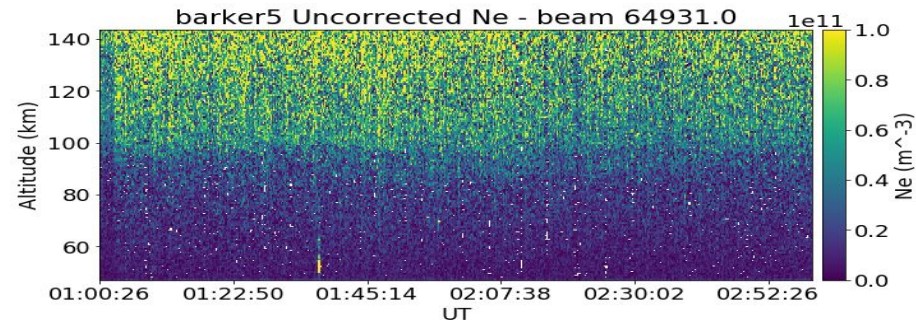
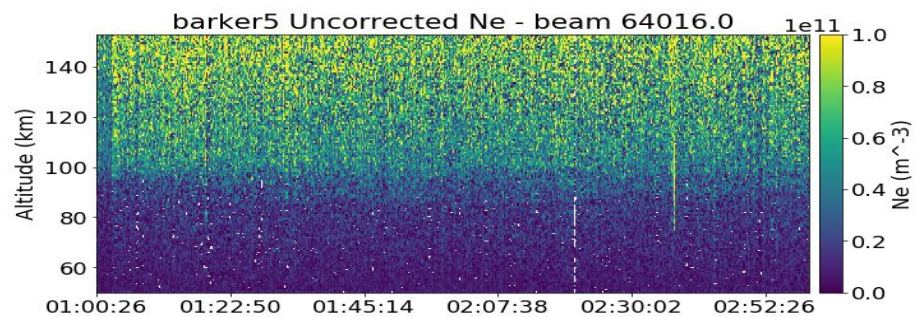


longpulse 8 -
integration time= 1 min

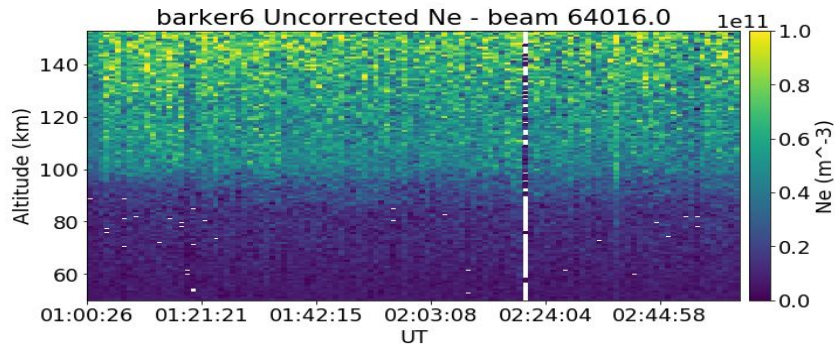
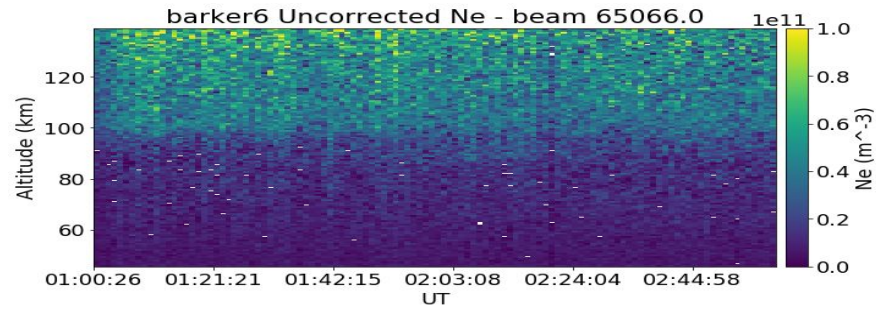
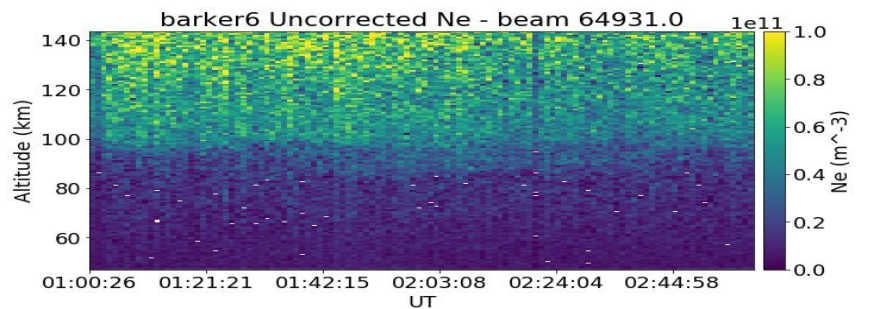
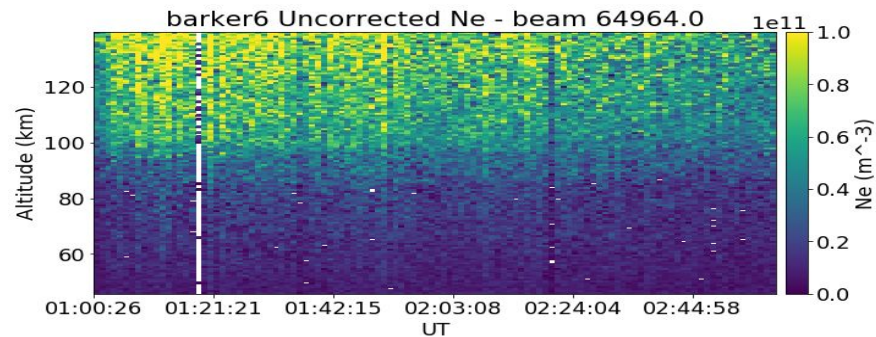
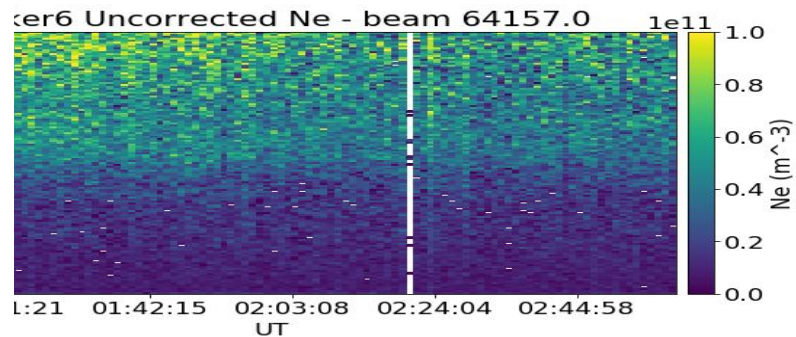


Longpulse 10
integration = 5 min

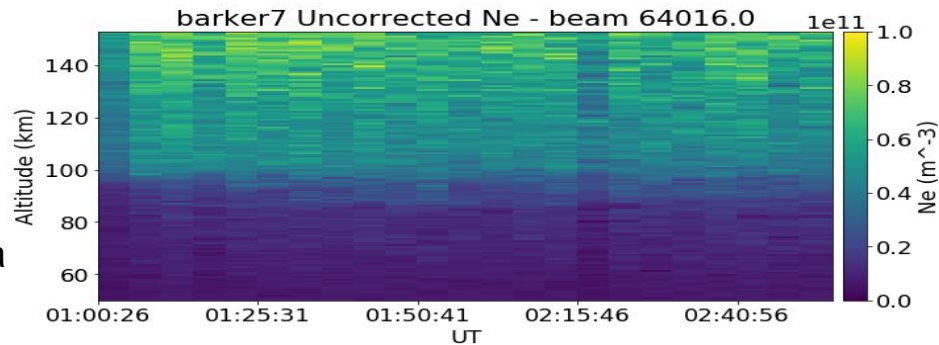
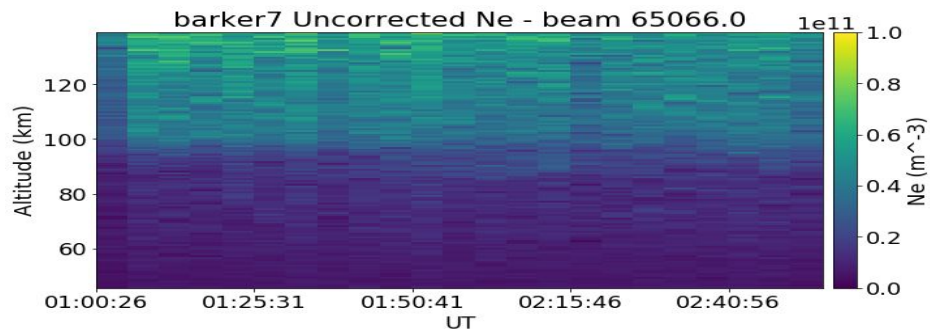
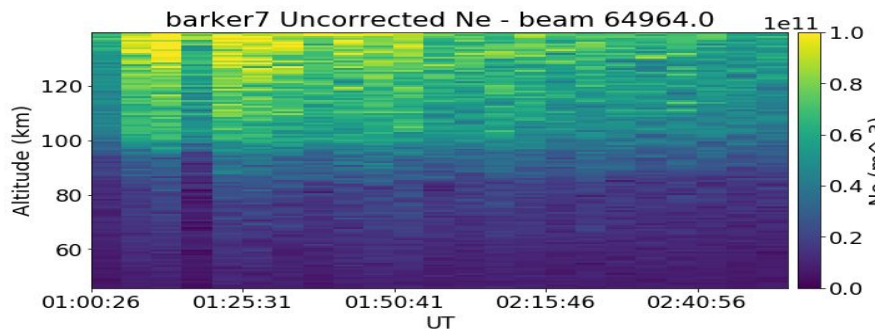
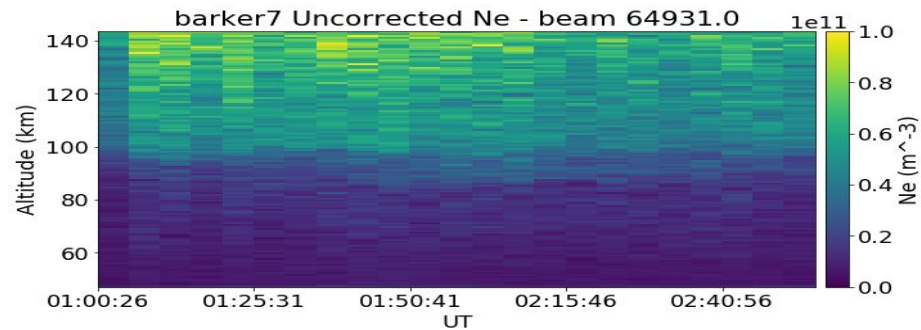
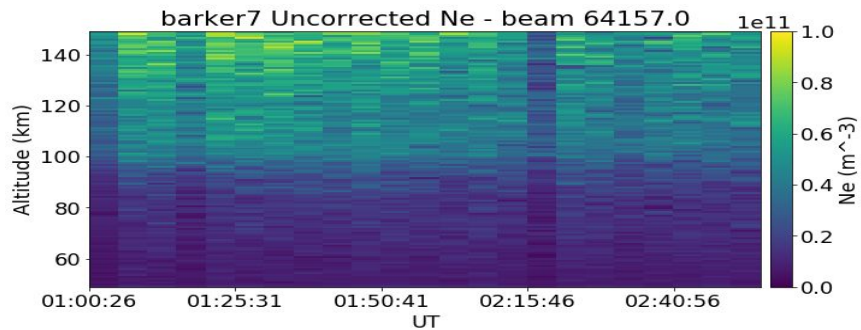




Barker 5 ne - list integration



Barker 6 - list
integration



Barker 7 - include integra