

Introduction to Incoherent Scatter Radar: Part 4 - Plasma Lines

Anthea Coster

MIT Haystack Observatory

With credit and thanks to Anja Strømme,
Craig Heinselmann, Phil Erickson, Bill
Rideout, Josh Semeter, Juha Vierinen

And my advisor: William E. Gordon

Incoherent Scatter Radar

- Radar
- Scatter
- Incoherent -
Plasma Line

Collective behavior

- There are a number of wave modes existing inherently in the ionospheric plasma

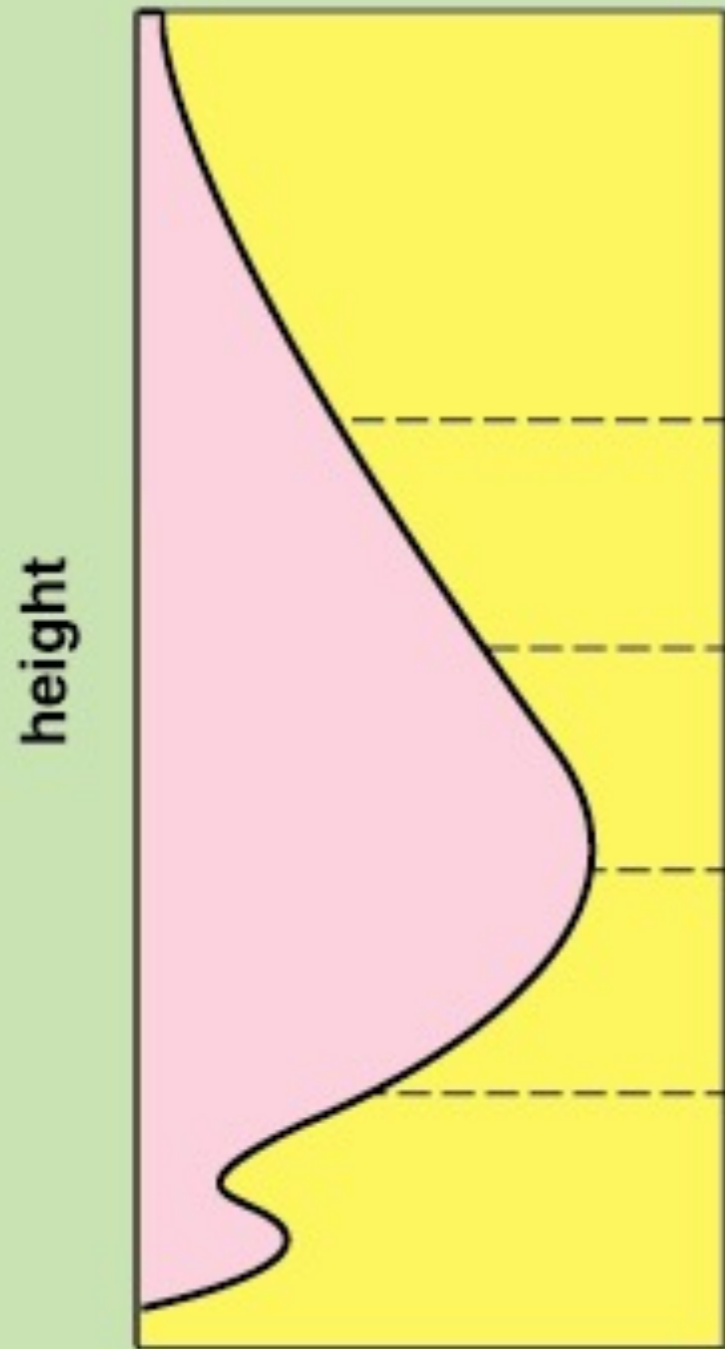
Ion acoustic waves

→ *Langmuir waves (plasma frequency)*

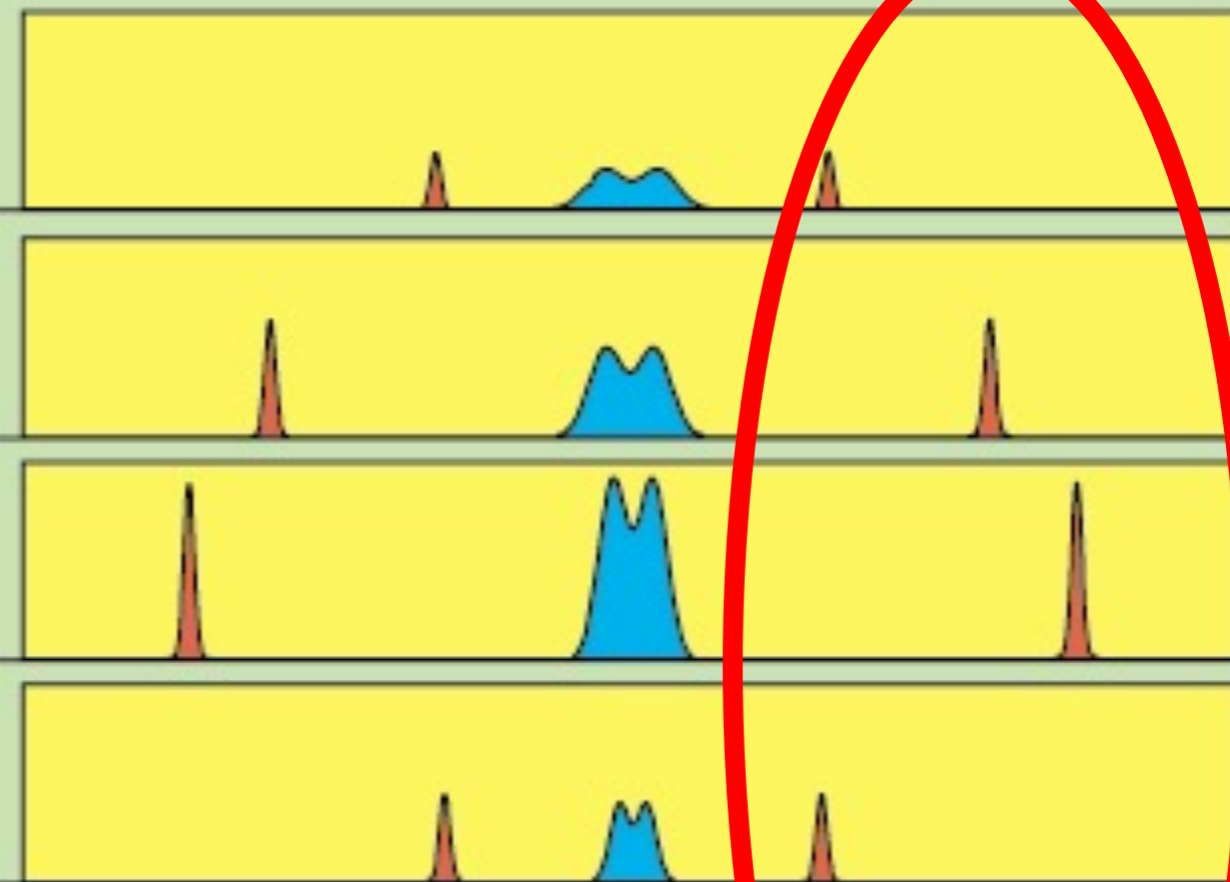
Debye Spheres (Debye length)

Landau Damping

electron density profile



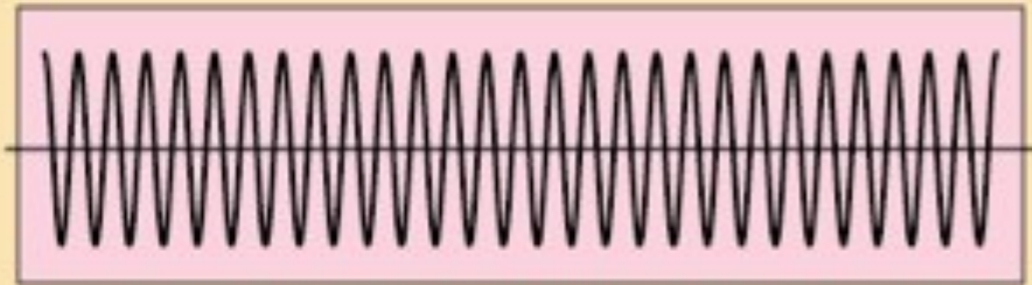
Incoherent scatter spectra



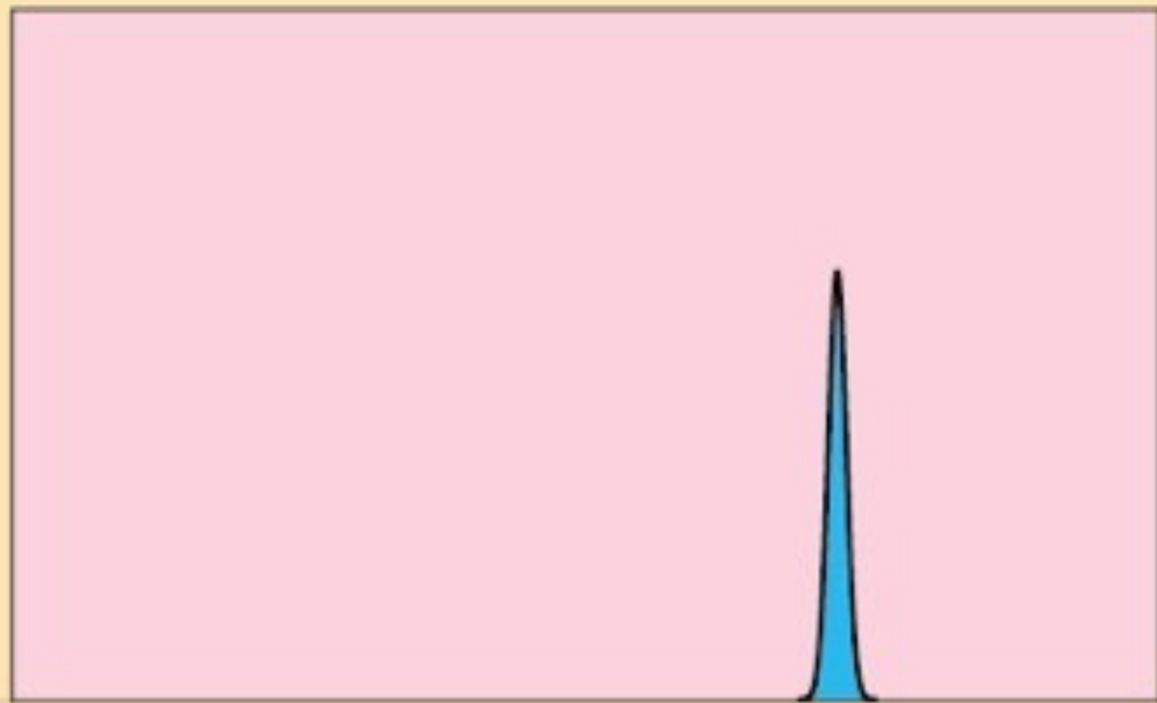
spectral amplitude

plasma line downshifted ion line plasma line upshifted

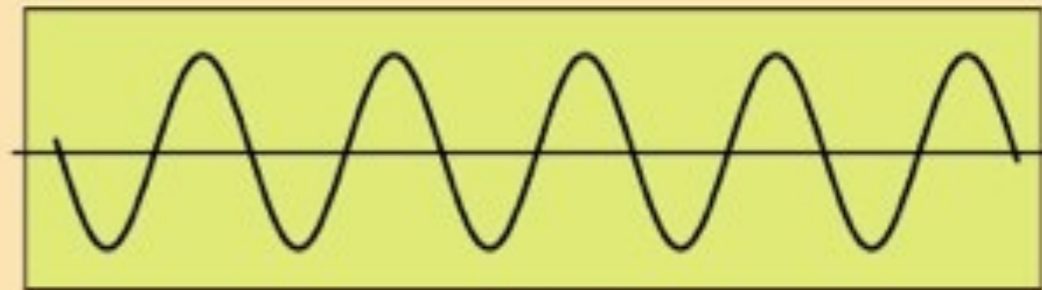
← frequency →



time



frequency



time



frequency

Incoherent scattering: the short story



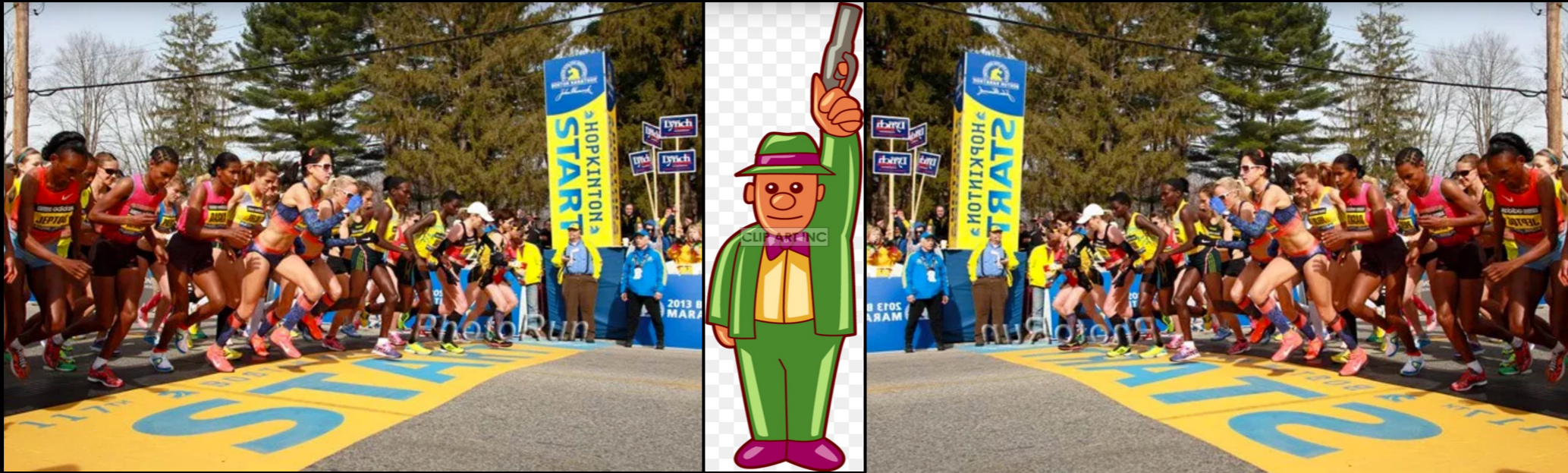
Plasma Frequency ~

$$\omega_p^2 = \frac{n_0 e^2}{m \epsilon_0}$$



Plasma Frequency ~

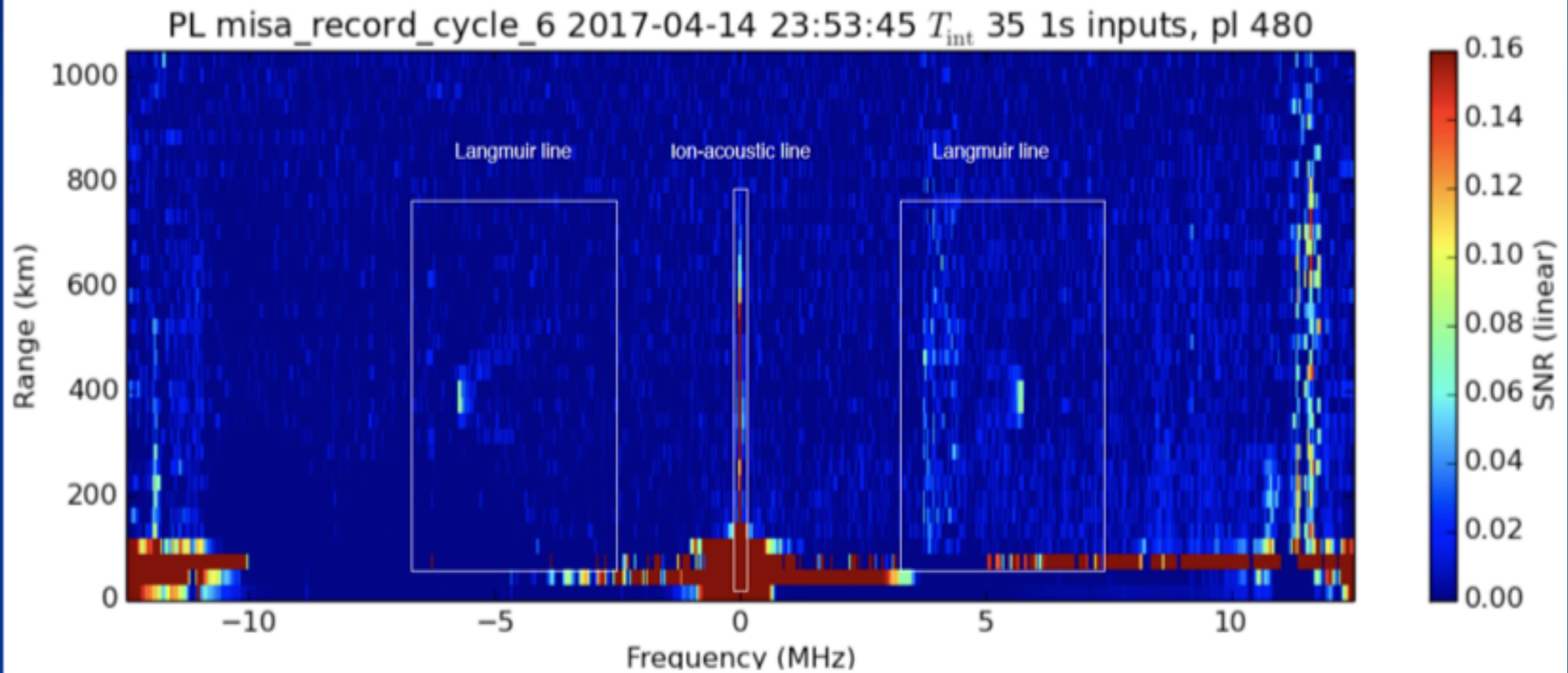
$$\omega_p^2 = \frac{n_0 e^2}{m \epsilon_0}$$



The electron gas oscillates at a natural plasma oscillation frequency



Langmuir (or plasma) waves



IS Spectrum: Plasma Line

