

MIT's
Information Technology
Architecture Group (ITAG)

IT SPARCC update
April 25, 2007

Agenda

- History
- FY06-07 Update
- Technology Review Board (TRB)
- Future Role of ITAG

Historical Perspective

ITAG formation

- Created in Feb 2000 by then Provost and EVP
- Key charter items:
 - ITAG was charged with defining, maintaining, improving, and communicating to the community about MIT's I/T architecture, including data and objects.
 - ITAG should provide a framework for a coherent, effective, secure, robust, scalable, and adaptable infrastructure which enables applications that address MITs educational and business needs.
 - Strong alignment with both Administrative & Academic governance/steering groups.

Review Charter

- In addition, ITAG was asked to review any I/T system or service that meets any of the following five criteria. The system or service:
 - is critical to MIT's educational or business mission.
 - will be used by MIT community members outside the originating MIT department, lab, center, or organization that is developing it.
 - adds to or modifies the I/T infrastructure.
 - requires significant use of MIT's I/T infrastructure.
 - entails substantial costs or special Institute funds to implement, operate, or support.

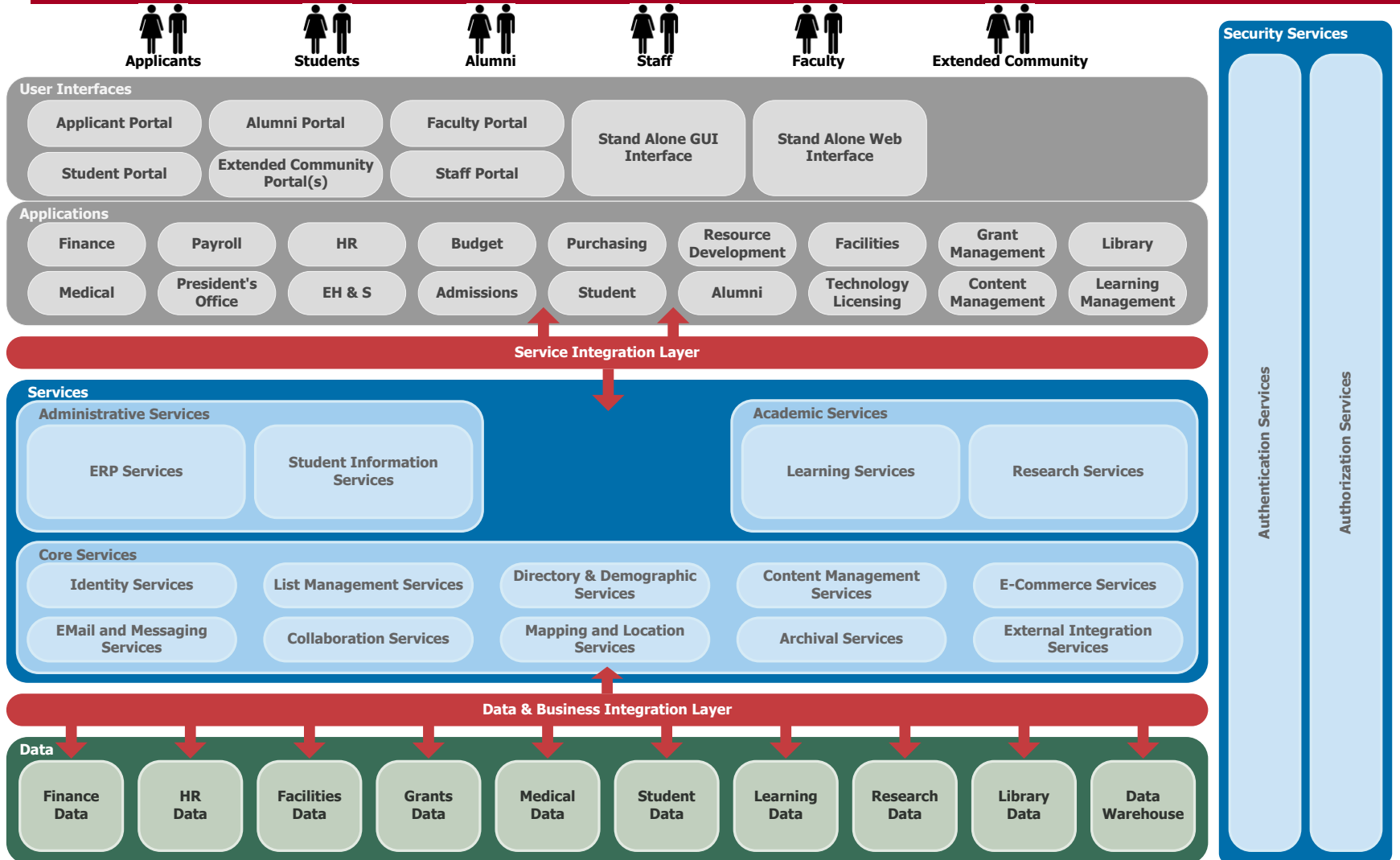
Membership

- Chaired by Susan Minai-Azary, Director of Integration in IS, from 1996 until 2003; Scott Thorne, MIT Data Architect, interim Chair until Sep 2006.
- 10-15 Members from IS/IS&T, Libraries, OCW, Sloan, OSP, DUE, LNS
- Faculty members provided insight and input from their respective fields (limited participation)

Artifacts

- Enterprise Architecture Guide v0.1 published in Aug 2004 (see next slide)
- Several technology reviews and first iteration of standards/guidelines published
- ITAG Lunchtime Seminars communicate outward to IT community-of-interest in IS&T and the DLCs
- Clearinghouse for IT Policies, centrally and in the DLCs

EAG Logical Architecture



FY06-07 Update

- ITAG web presence and content refreshed
- Membership being refreshed
- Published policy on Sensitive data, guidelines for developers and IT Staff
- 2nd iteration of standards and guidelines created
- ITAG Lunchtime Seminars (more scheduled for 07-08)
- IT Consulting services
- Spawned TRB as a working group of ITAG to ensure coverage for tech reviews and alignment with the Strategic Plan.

More info: <http://web.mit.edu/itag>

Technology Review Board (TRB)

- TRB convened in Oct 2006
- Forum for ensuring cross-org communications and review. Initial membership from IS&T
- TRB serves as an ITAG aligned “working group” for collaboration on technical design reviews, provide recommendations/decisions, ensure requirements are being fulfilled by the project/initiative/product.
 - Fulfill the charter component of “technical reviews” outlined at the creation of ITAG

TRB Update

- Requires committed resources and time (part of job)
- Focus on technology reviews and provide findings/recommendations to project/product sponsors
- Standardized templates for capturing project/product details
- 10 reviews performed
- Published Technology Trends that was used to help drive the strategic planning process

More info: <https://confab.mit.edu/confluence/display/TRB2006/Home>

The Future

Challenges

- ITAG did not have oversight over technology decisions in the DLCs
- Membership voluntary and not fully representative of community
- Alignment with MIT business (not consistent)
- Membership changes due to changing roles of individuals across MIT

Opportunities

- ITAG needs re-confirmation of its charter from MIT's senior leaders
- Operating style? Some options:
 - Corporate Architecture style
 - Voluntary Collaboration/Information sharing group
 - Focused on a few core disciplines
- IT/Business Policy capability?
- Creating IT roadmaps/strategies that is aligned with MIT's business goals?

ITAG as a Program: A proposal

- Policy making/Governance models defined with clarity on ITAG's role
- Commitment from DLCs on representative membership
- Commitment from DLCs on adoption of ITAG artifacts
- Agenda driven by a work plan: Roadmaps published on regular schedule
- Refresh of EAG. Requires major time commitment from ITAG members
- Rotating chairs?
- Dedicated program manager: Rob Smyser

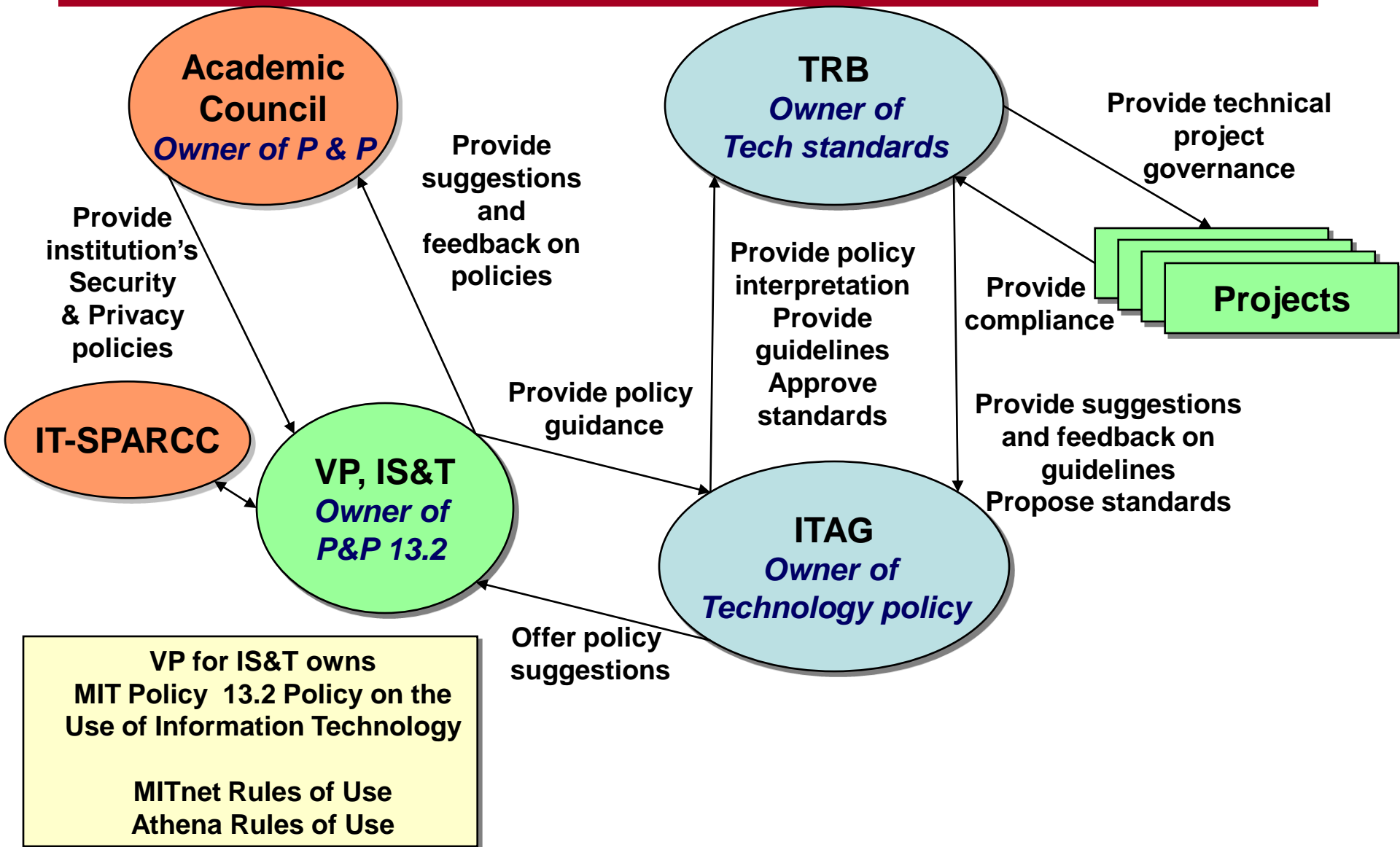
Value to the Community

- ITAG, in partnership with the DLCs, drive the development of:
 - An Enterprise Architecture that outlines our Infrastructure integration strategy
 - “Ramps” (Software) to access the Infrastructure “Highway”
 - Rules (IT Guidelines) for leveraging infrastructure (Architecture statements and guides)
 - Product and service roadmaps with regular refreshes
- Proactive and reactive identification of opportunities to converge and collaborate
- Leverage subject matter expertise and best practice from across the community

Membership

- Members' time commitment to ITAG should be considered to be part of the job versus volunteers.
- Membership representative of the MIT Community.
- Create a “Faculty Advisory Group” for semi-annual updates and discussions
- Alignment with IT SPARCC, ASPCC, SSSC and MITCET

A proposed IT Policy decision model



Discussion

ITAG Work plan for FY07-08

ITAG Work -- Programs for 2007

EAG

Roadmaps

Issues &
Projects

Technology
Trends

Goal: serviceable update of the guide to 2007 version, by Jul 1.

Jan

Feb letter-size recasting of 0.1

Mar prepare outline of new EAG
 create phased project plan

Apr

May

Jun

Jul Publish 2.0 of EAG by Jul 1.

Aug

Sep

Oct quarterly updates thereafter...

Nov

Dec

Goal: do three or four of these this year.

Identity Management

background discussion

marketing slide deck

executive summary / timeline

Integrated Communications

background discussion

marketing slide deck

executive summary / timeline

Next -- ?

background discussion

marketing slide deck

executive summary / timeline

Last -- ?

background discussion

marketing slide deck

executive summary / timeline

Goal: keep up with tangible outcomes to projects we embrace.

Clearinghouse for IT Policies

IT Governance hierarchy (IT-Sparcc, MITCET, ASPCC, etc.)

Open Source Licensing

Systems of Record

Architecture Issues surfaced at TRB

app certs for web svcs

web single sign on

DCAD Projects with TRB footprint

Sloan ORC db

OME db

Amon's Needs Assessments packet

Lunchtime Seminars

Filemaker Best Practices 2/7

TBD 4/18

TBD 6/27

TBD no date yet

TBD no date yet

DONE

Libraries' FM Policy

Sensitive data policy

Goal: drive architecture with important evolutionary trends in I/T. Prioritize by ITAG. (done) Drive new roadmaps from this list.

Data Centers -- on-demand provisioning, Power, Virtualization, Clustering, Storage, DR

Integrated Communications & Groupware -- VoIP, voicemail, Cell Phones, SIP, IM, Conferencing,

IdM -- AuthN, AuthZ, Federation (SAML, Shibboleth, etc.), provisioning

Security and Privacy -- network, phishing, spam/spim, personal identity, applications, sensitive data, DRM

Content Services -- Doc management, web content, wikis, blogs, repositories, record mgmt, media, portals, etc.

Service Oriented Infrastructure and Applications -- web services, business rules engine, real-time data repositories, UDDI, service bus, application stacks

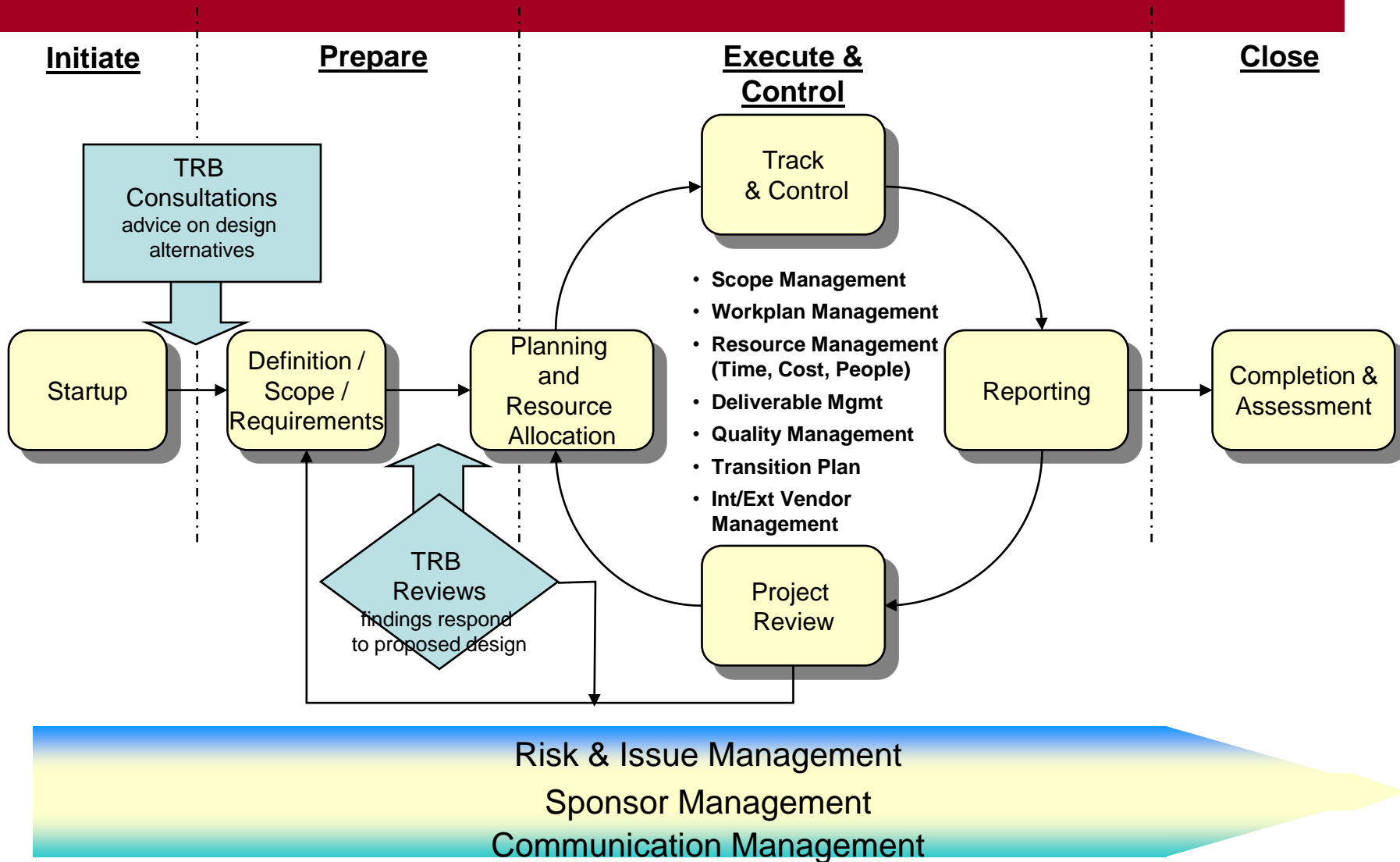
Administrative & E-Commerce Systems
Student systems, ERP (finance, HR), payment services (credit cards, ePayments)

End User Computing
Desktop standards, Operating Systems, student/faculty computing services (Athena, etc.), Printing, Security, Browsers, eMail clients, Office productivity, AV, desktop tools, backups.

FY08 Top Areas of Focus

- These were identified as the top areas by ITAG:
 - Identity Management
 - Content Services/Social Computing Tools
 - Storage & Backups
 - End User Computing Services (GroupWare)
 - Security & Privacy
 - Web Services

TRB in the Project Lifecycle



TRB Reviews and Outcomes

- Design Reviews (👇 = redesign; ☑ = no objections)
 - Wikis ☑
 - InsideMIT Portal ☑
 - Undergraduate Admissions System, Phase II ☑
 - Web Single Sign On / Application Certificates 👇
 - IS&T Wiki Service ☑
 - Personal SIP Service ☑
 - Altiris Remote Management Solution ☑
- Consultations
 - Blackberry Internet Service Options ☑
 - InsideMIT Design and Development Directions ☑
 - Web Applications Platform Direction for ERP Applications ☑

More info: <https://confab.mit.edu/confluence/display/TRB2006/Home>