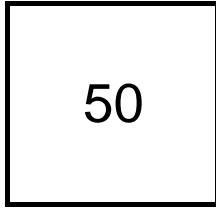


## Creating Cases

Created Last Week



### Cases Created Per Day

Average	Max
8.33	18 last week
16.36	186 6 weeks
5.32	186 6 months

### Total Last Week

50 opened  
20 closed

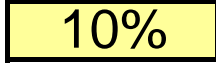
### Month so far

246 opened  
404 closed

Pending Cases as of 11/20/2006

## Closing Cases

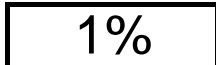
7 or more days



1 to 7 days

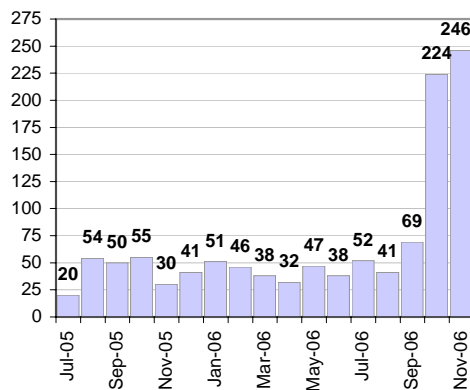


< 24 hours



(over the last six weeks)

### Cases Created Per Month



### Pending Queue over the last 6 months



Net effect over six months:

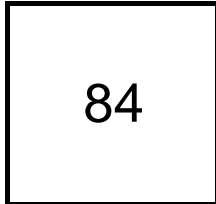
49 ↑

### Stalled Cases

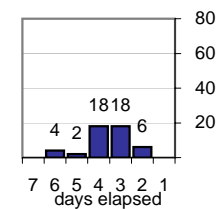
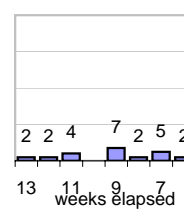
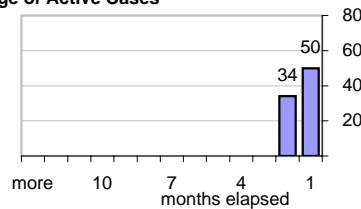
143 age of oldest, in days gone by  
45 longest in days since any activity

## Pending Queue

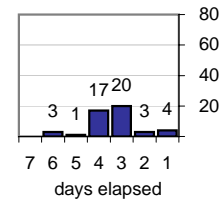
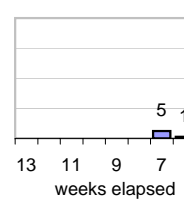
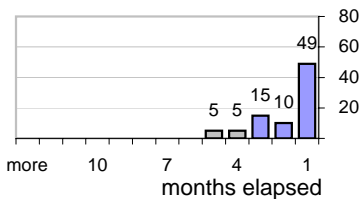
Currently Open



### Age of Active Cases



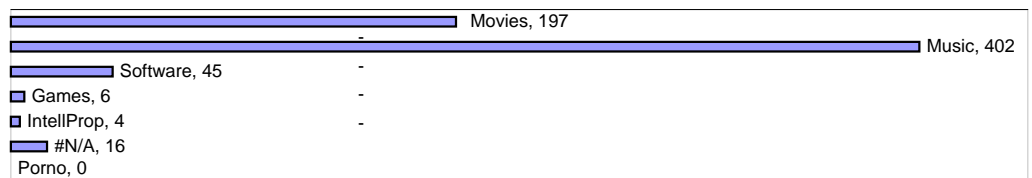
### Time Since Any Activity in Active Cases



## Complaint Types

### Top Complaint Types over 6 months

Copyright Infringement 670



### Sources of Copyright Infringement Complaints

### Relative Volume of Copyright DMCA Cases, year to year

