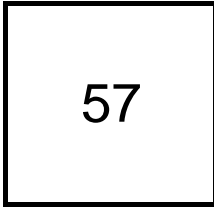


## Creating Cases

Created Last Week



### Cases Created Per Day

Average	Max
14.25	45 last week
18.25	186 6 weeks
5.58	186 6 months

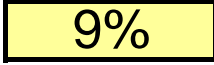
Total Last Week  
57 opened  
1 closed

Month so far  
41 opened  
31 closed

Pending Cases as of  
12/4/2006

## Closing Cases

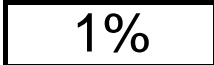
7 or more days



1 to 7 days

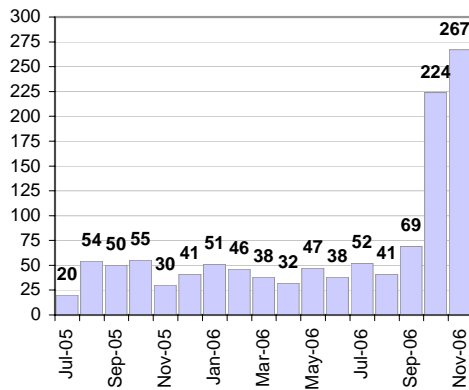


< 24 hours

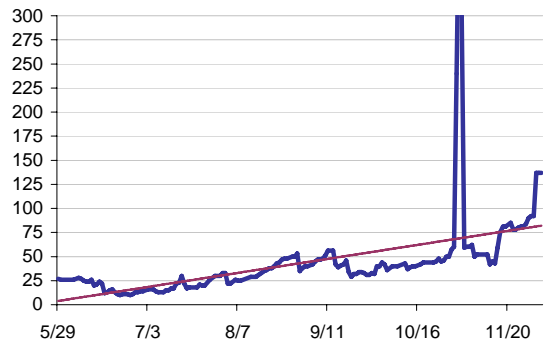


(over the last six weeks)

### Cases Created Per Month



### Pending Queue over the last 6 months



Net effect over six months:

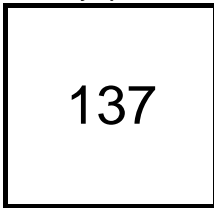
110 ↑

### Stalled Cases

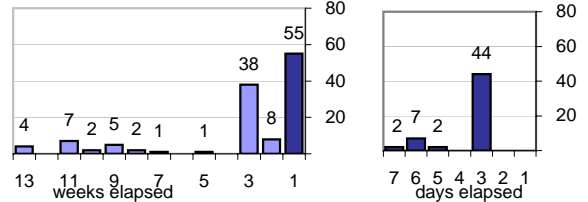
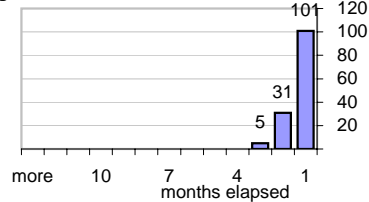
157 age of oldest, in days gone by  
59 longest in days since any activity

## Pending Queue

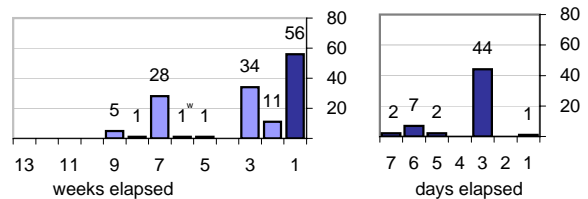
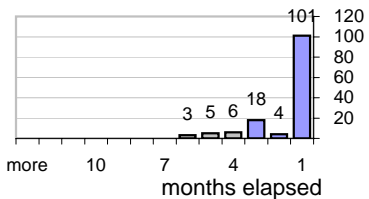
Currently Open



### Age of Active Cases



### Time Since Any Activity in Active Cases

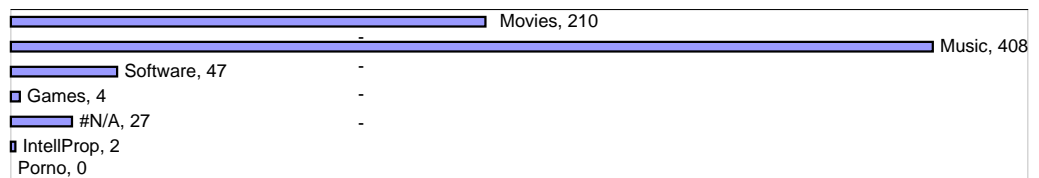


## Complaint Types

### Top Complaint Types over 6 months

Copyright Infringement 698

### Sources of Copyright Infringement Complaints



### Relative Volume of Copyright DMCA Cases, year to year

