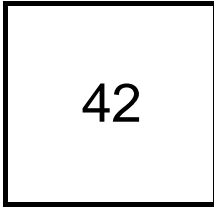


## Creating Cases

Created Last Week



### Cases Created Per Day

Average	Max
7.00	15 last week
18.52	186 6 weeks
5.68	186 6 months

### Total Last Week

42 opened  
3 closed

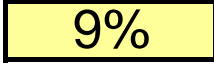
### Month so far

41 opened  
31 closed

Pending Cases as of  
12/11/2006

## Closing Cases

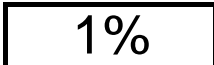
7 or more days



1 to 7 days

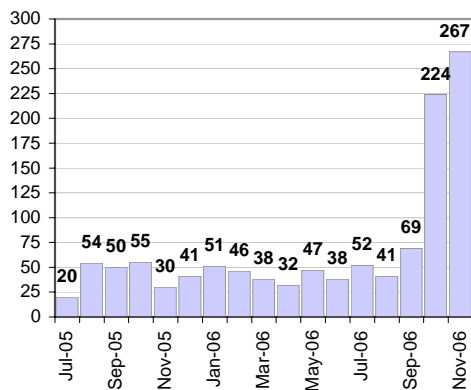


< 24 hours

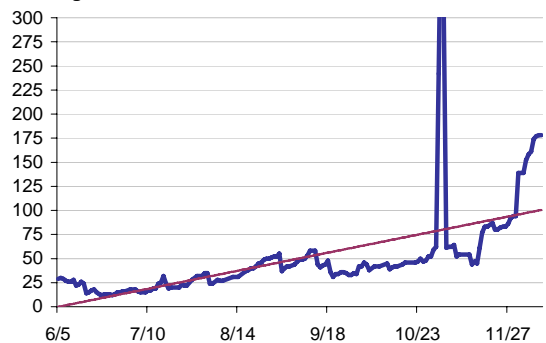


(over the last six weeks)

### Cases Created Per Month



### Pending Queue over the last 6 months



Net effect over six months:

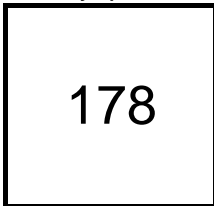
149 ↑

### Stalled Cases

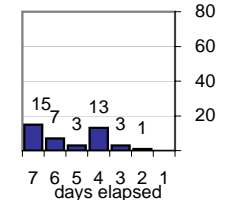
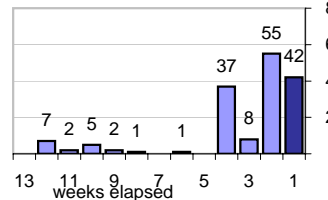
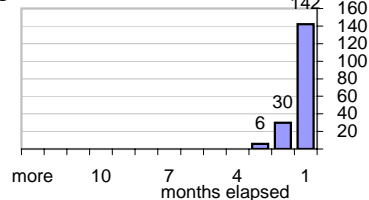
164 age of oldest, in days gone by  
66 longest in days since any activity

## Pending Queue

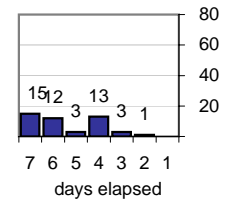
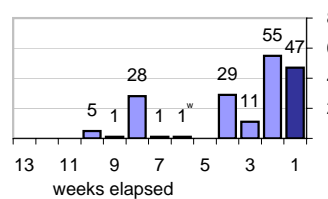
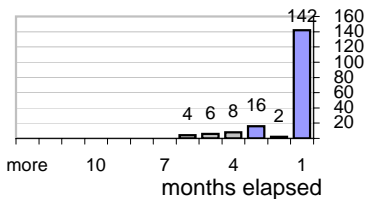
Currently Open



### Age of Active Cases



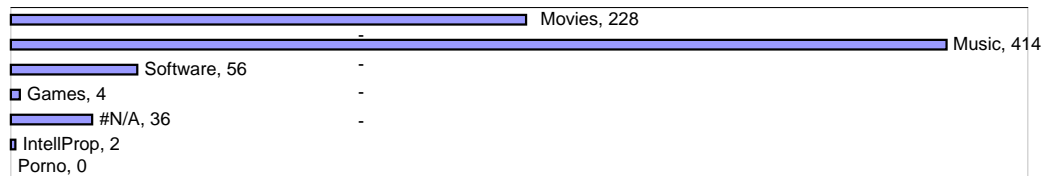
### Time Since Any Activity in Active Cases



## Complaint Types

### Top Complaint Types over 6 months

Copyright Infringement 740



### Sources of Copyright Infringement Complaints

### Relative Volume of Copyright DMCA Cases, year to year

