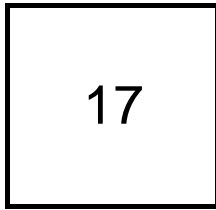


Creating Cases

Created Last Week



Cases Created Per Day

Average	Max
8.50	14 last week
7.74	45 6 weeks
6.39	186 6 months

Total Last Week

17 opened
4 closed

Month so far

41 opened
31 closed

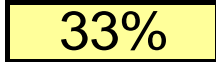
Pending Cases as of 1/1/2007

Closing Cases

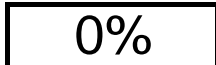
7 or more days



1 to 7 days

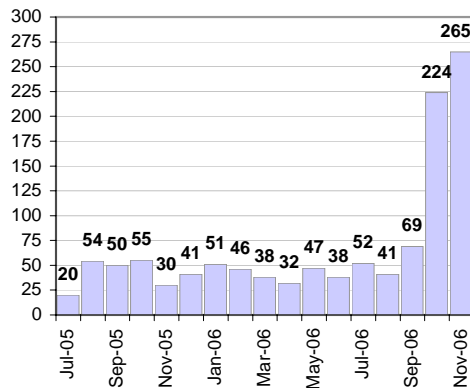


< 24 hours

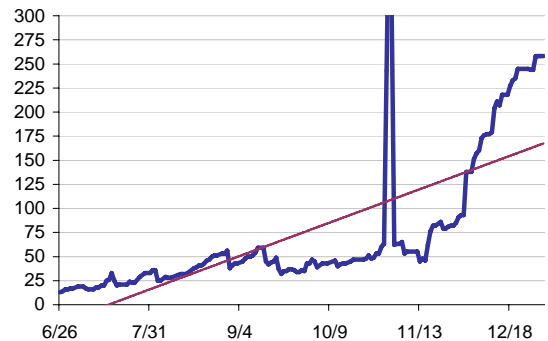


(over the last six weeks)

Cases Created Per Month



Pending Queue over the last 6 months



Net effect over six months:

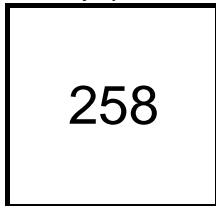
245 ↑

Stalled Cases

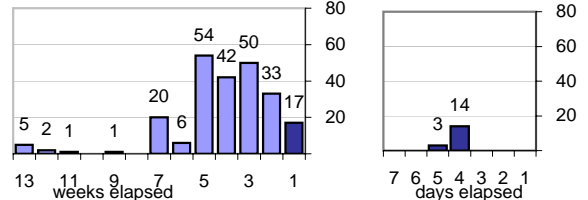
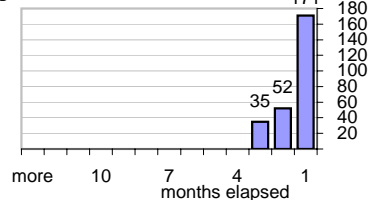
185 age of oldest, in days gone by
87 longest in days since any activity

Pending Queue

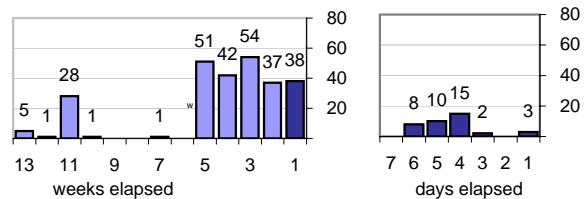
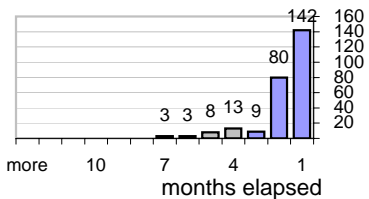
Currently Open



Age of Active Cases



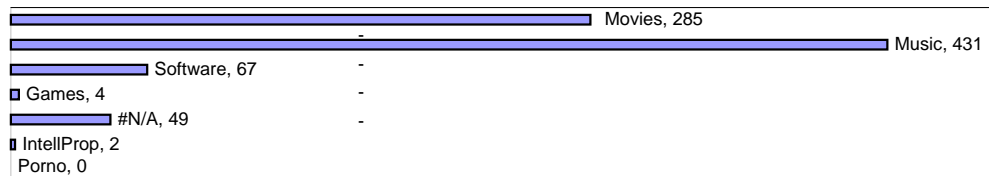
Time Since Any Activity in Active Cases



Complaint Types

Top Complaint Types over 6 months

Copyright Infringement 838



Sources of Copyright Infringement Complaints

Relative Volume of Copyright DMCA Cases, year to year

