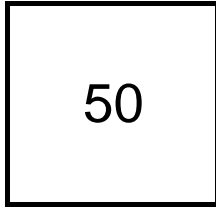


## Creating Cases

Created Last Week



## Cases Created Per Day

Average	Max
10.00	29 last week
7.92	29 6 weeks
6.70	186 6 months

## Total Last Week

50 opened  
15 closed

## Month so far

67 opened  
32 closed

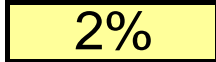
Pending Cases as of 1/15/2007

## Closing Cases

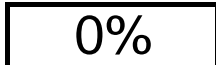
7 or more days



1 to 7 days

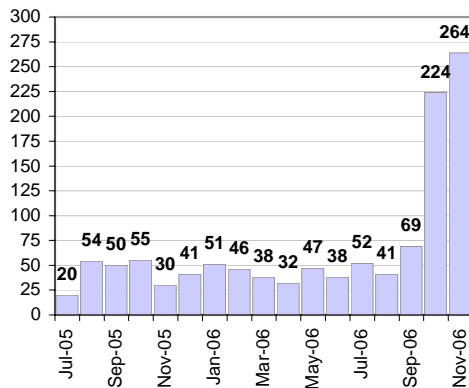


< 24 hours

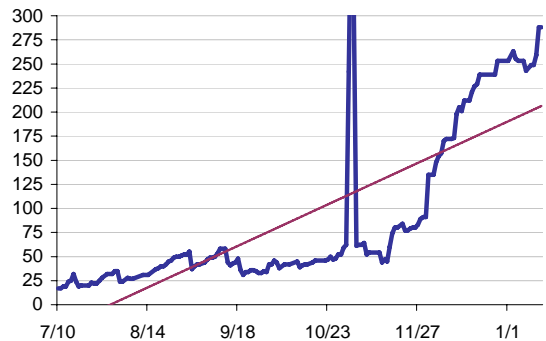


(over the last six weeks)

## Cases Created Per Month



## Pending Queue over the last 6 months



Net effect over six months:

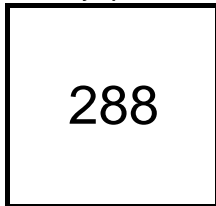
271 ↑

## Stalled Cases

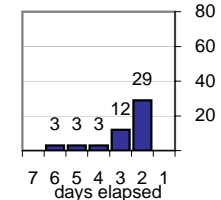
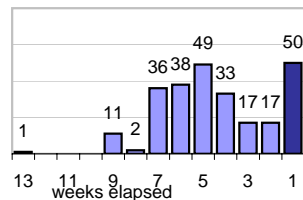
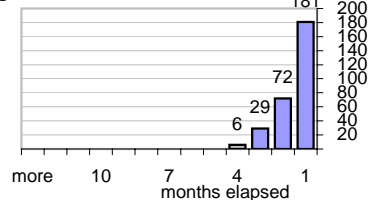
199 age of oldest, in days gone by  
101 longest in days since any activity

## Pending Queue

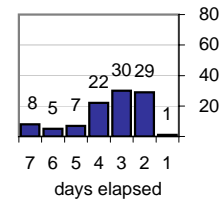
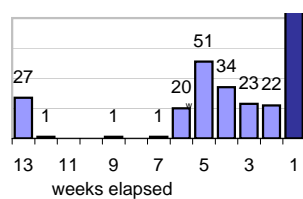
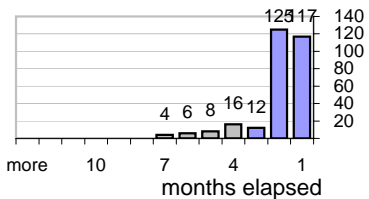
Currently Open



## Age of Active Cases



## Time Since Any Activity in Active Cases

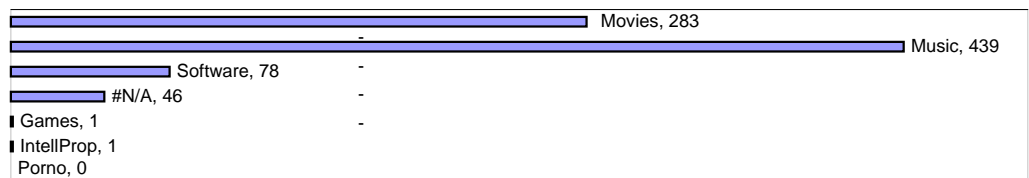


## Complaint Types

### Top Complaint Types over 6 months

Copyright Infringement 848

### Sources of Copyright Infringement Complaints



### Relative Volume of Copyright DMCA Cases, year to year

