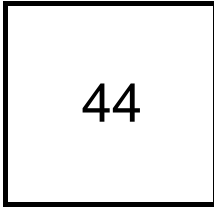


## Creating Cases

Created Last Week



### Cases Created Per Day

Average	Max
8.80	17 last week
8.08	29 6 weeks
6.96	186 6 months

### Total Last Week

44 opened  
0 closed

### Month so far

111 opened  
37 closed

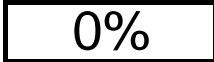
Pending Cases as of 1/22/2007

## Closing Cases

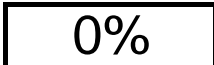
7 or more days



1 to 7 days

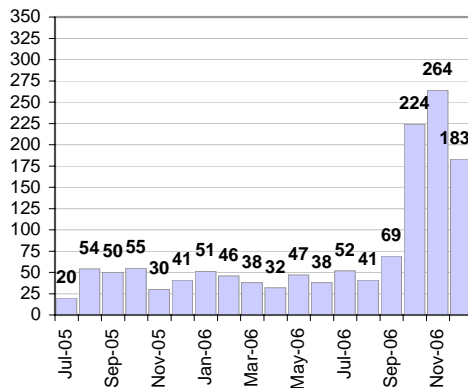


< 24 hours

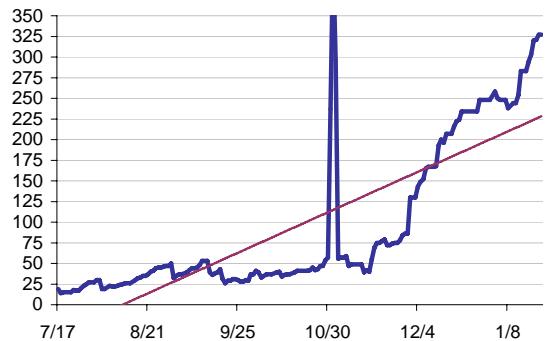


(over the last six weeks)

### Cases Created Per Month



### Pending Queue over the last 6 months



Net effect over six months:

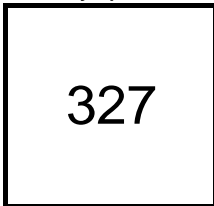
308 ↑

### Stalled Cases

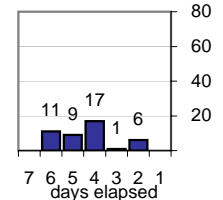
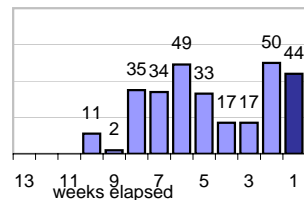
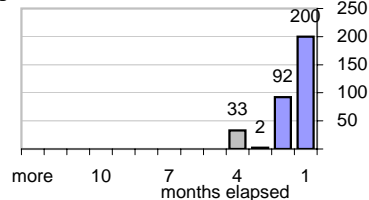
206 age of oldest, in days gone by  
108 longest in days since any activity

## Pending Queue

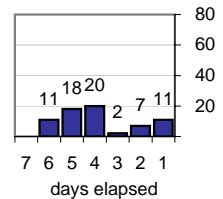
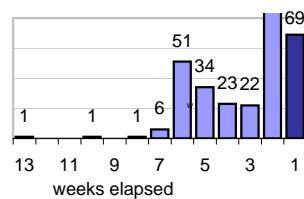
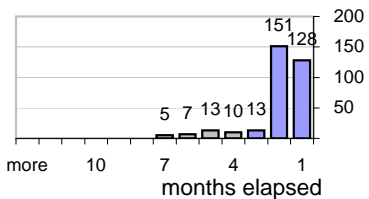
Currently Open



### Age of Active Cases



### Time Since Any Activity in Active Cases

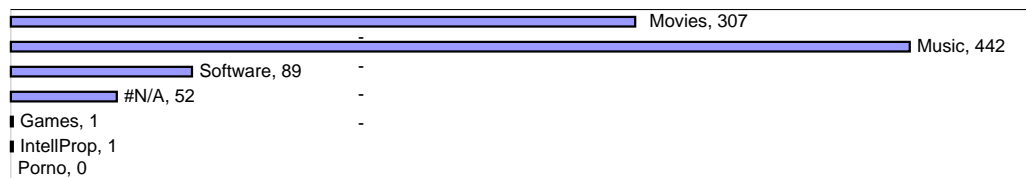


## Complaint Types

### Top Complaint Types over 6 months

Copyright Infringement 892

### Sources of Copyright Infringement Complaints



### Relative Volume of Copyright DMCA Cases, year to year

