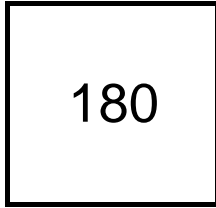


Creating Cases

Created Last Week



Cases Created Per Day

Average	Max
30.00	61 last week
12.21	61 6 weeks
8.27	186 6 months

Total Last Week

180 opened
27 closed

Month so far

121 opened
51 closed

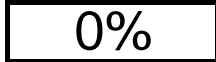
Pending Cases as of 2/5/07

Closing Cases

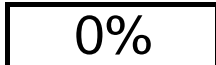
7 or more days



1 to 7 days

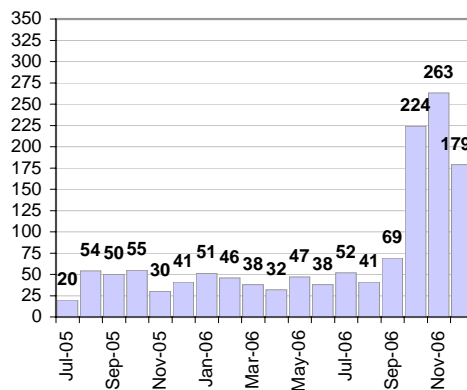


< 24 hours

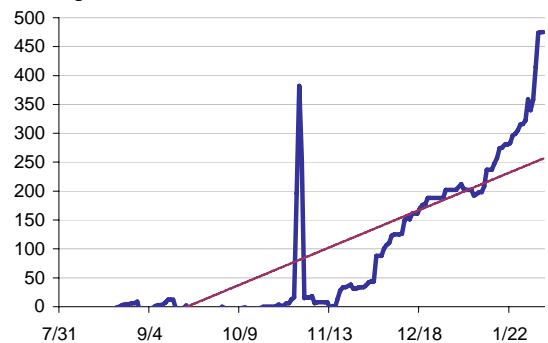


(over the last six weeks)

Cases Created Per Month



Pending Queue over the last 6 months



Net effect over six months:

489 ↑

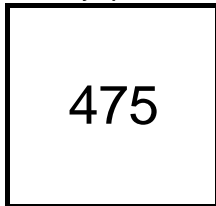
Stalled Cases

220 age of oldest, in days gone by

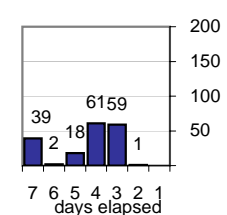
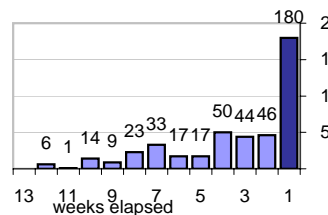
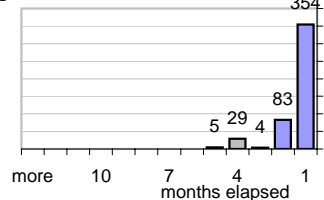
122 longest in days since any activity

Pending Queue

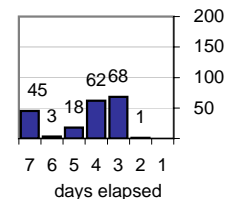
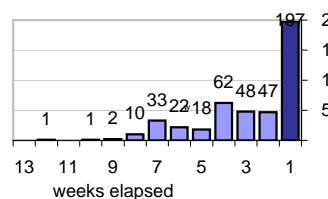
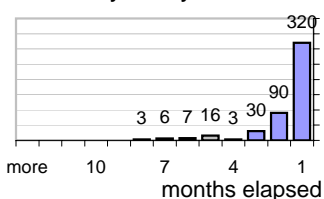
Currently Open



Age of Active Cases



Time Since Any Activity in Active Cases

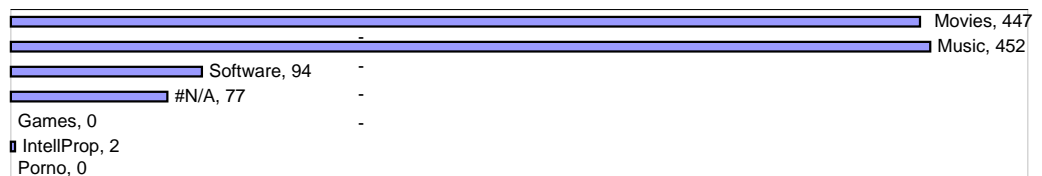


Complaint Types

Top Complaint Types over 6 months

Copyright Infringement 1,072

Sources of Copyright Infringement Complaints



Relative Volume of Copyright DMCA Cases, year to year

