

Creating Cases

Created Last Week

110

Cases Created Per Day

Average	Max
15.71	81 last week
13.84	81 6 weeks
9.67	186 6 months

Total Last Week
110 opened
211 closed

Month so far
378 opened
311 closed

Pending Cases as of
2/26/2007

Closing Cases

7 or more days

99%

1 to 7 days

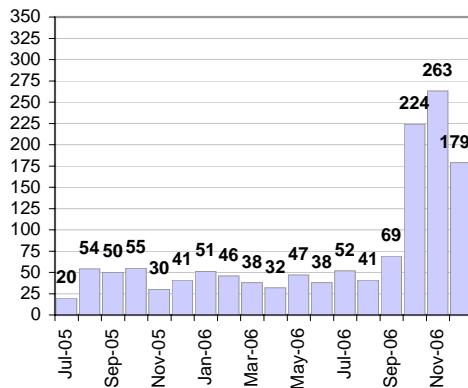
1%

< 24 hours

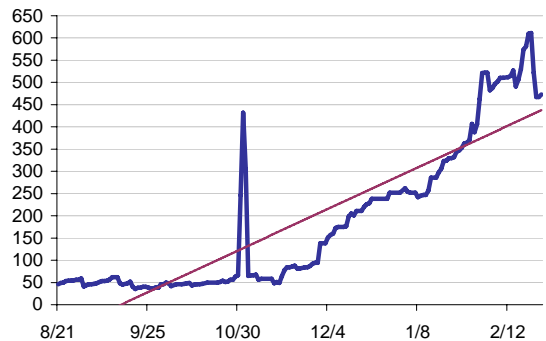
0%

(over the last six weeks)

Cases Created Per Month



Pending Queue over the last 6 months



Net effect over six months:

427 ↑

Stalled Cases

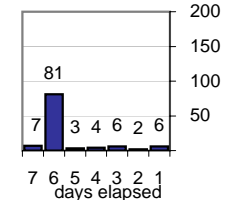
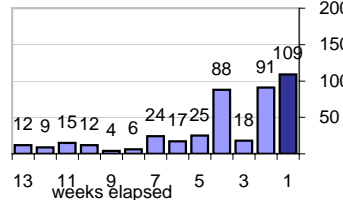
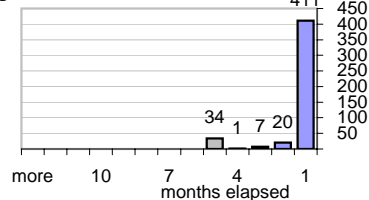
510 age of oldest, in days gone by
143 longest in days since any activity

Pending Queue

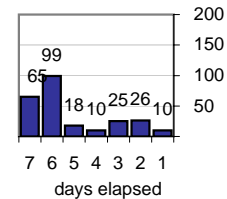
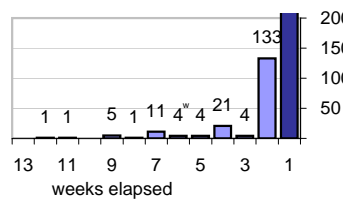
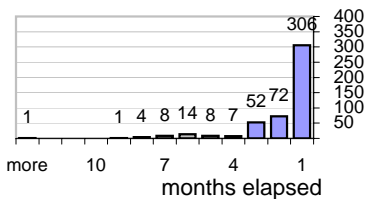
Currently Open

473

Age of Active Cases



Time Since Any Activity in Active Cases

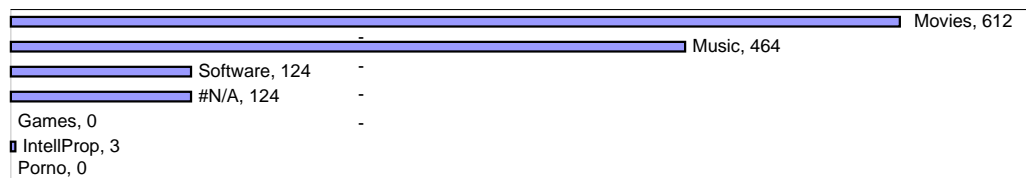


Complaint Types

Top Complaint Types over 6 months

Copyright Infringement 1,327

Sources of Copyright Infringement Complaints



Relative Volume of Copyright DMCA Cases, year to year

