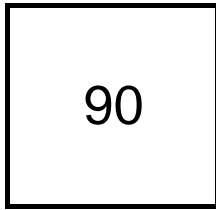


Creating Cases

Created Last Week



Cases Created Per Day

Average	Max
12.86	37 last week
12.66	81 6 weeks
11.01	186 6 months

Total Last Week

90 opened
51 closed

Month so far

266 opened
273 closed

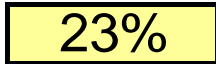
Pending Cases as of
3/26/2007

Closing Cases

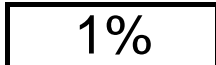
7 or more days



1 to 7 days

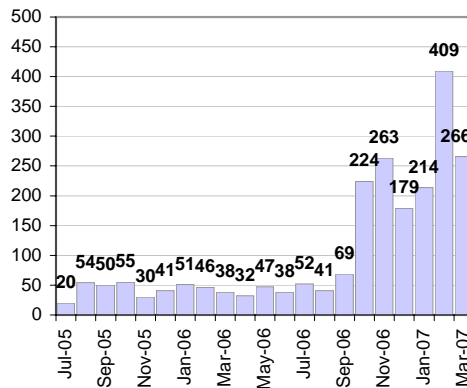


< 24 hours

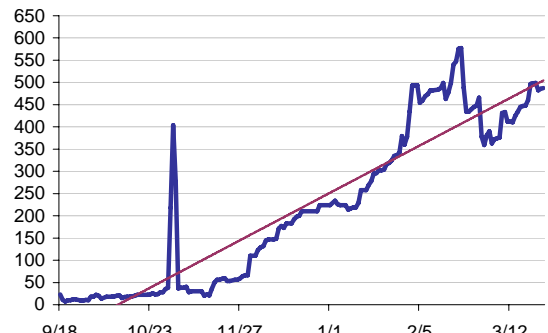


(over the last six weeks)

Cases Created Per Month



Pending Queue over the last 6 months



Net effect over six months:

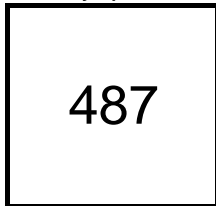
464 ↑

Stalled Cases

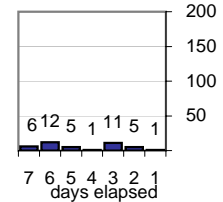
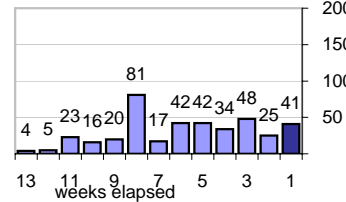
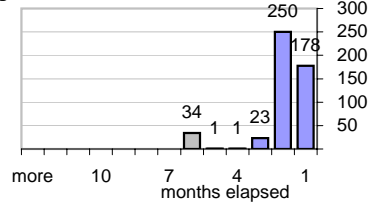
538 age of oldest, in days gone by
171 longest in days since any activity

Pending Queue

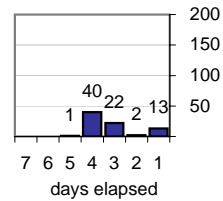
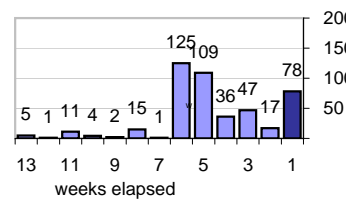
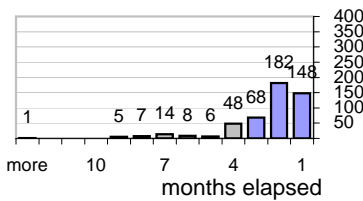
Currently Open



Age of Active Cases



Time Since Any Activity in Active Cases

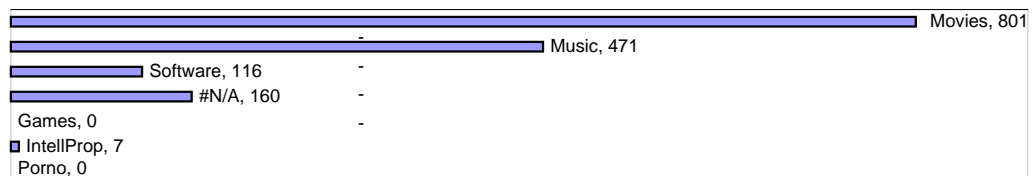


Complaint Types

Top Complaint Types over 6 months

Copyright Infringement 1,555

Sources of Copyright Infringement Complaints



Relative Volume of Copyright DMCA Cases, year to year

