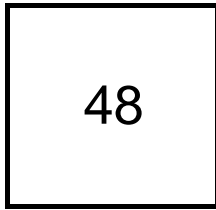


Creating Cases

Created Last Week



Cases Created Per Day

Average	Max
9.60	15 last week
10.00	55 6 weeks
11.32	186 6 months

Total Last Week

48 opened
26 closed

Month so far

49 opened
34 closed

Pending Cases as of
4/9/2007

Closing Cases

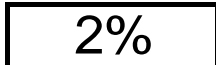
7 or more days



1 to 7 days

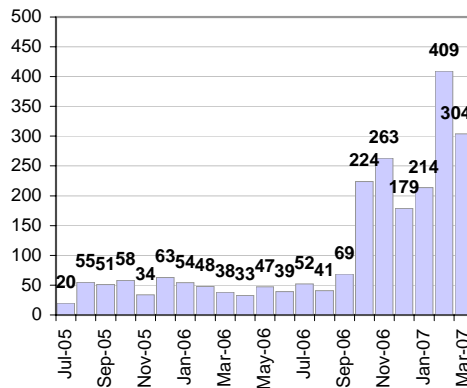


< 24 hours

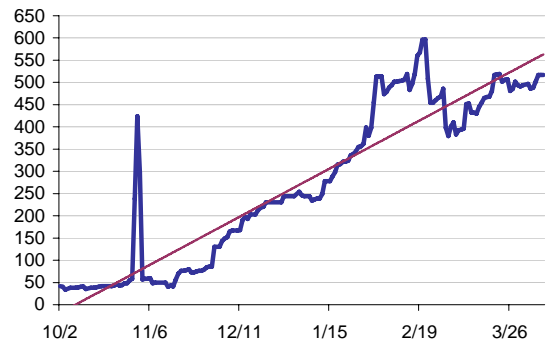


(over the last six weeks)

Cases Created Per Month



Pending Queue over the last 6 months



Net effect over six months:

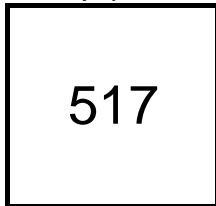
475 ↑

Stalled Cases

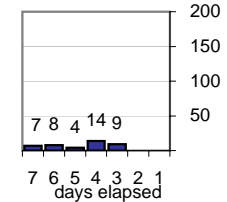
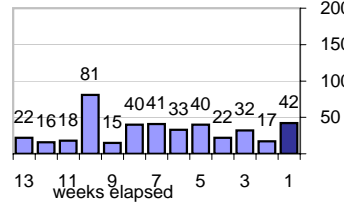
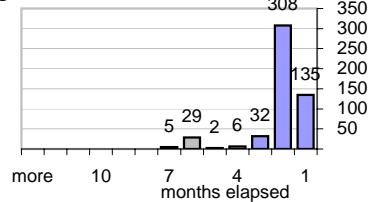
552 age of oldest, in days gone by
185 longest in days since any activity

Pending Queue

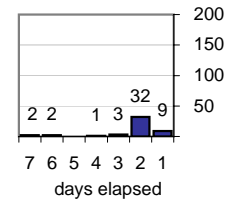
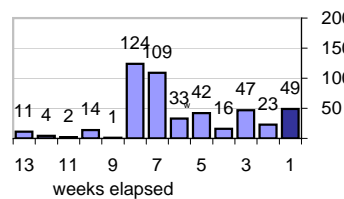
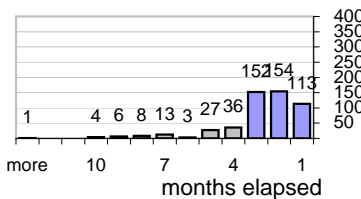
Currently Open



Age of Active Cases



Time Since Any Activity in Active Cases

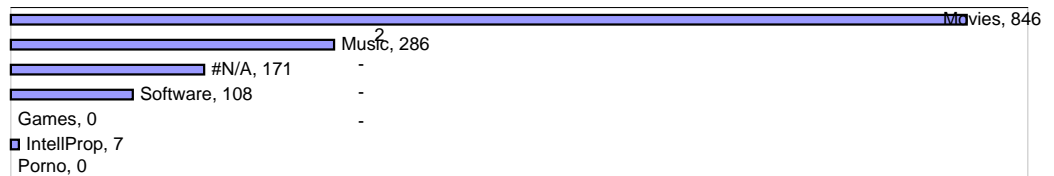


Complaint Types

Top Complaint Types over 6 months

Copyright Infringement 1,418

Sources of Copyright Infringement Complaints



Relative Volume of Copyright DMCA Cases, year to year

