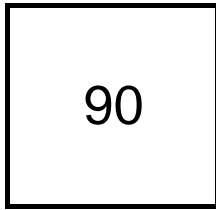


## Creating Cases

Created Last Week



### Cases Created Per Day

Average	Max
12.86	26 last week
9.92	38 6 weeks
12.10	186 6 months

### Total Last Week

90 opened  
44 closed

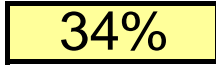
### Month so far

259 opened  
171 closed

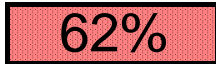
Pending Cases as of  
4/30/2007

## Closing Cases

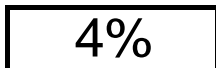
7 or more days



1 to 7 days

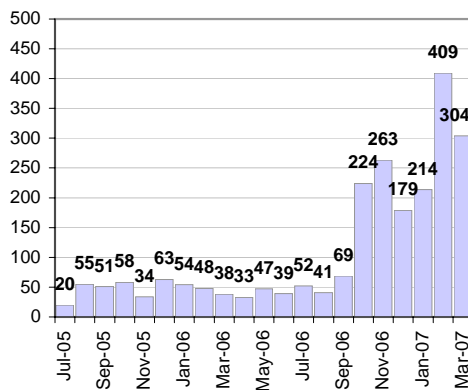


< 24 hours



(over the last six weeks)

### Cases Created Per Month



### Pending Queue over the last 6 months



Net effect over six months:

541 ↑

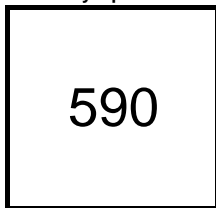
### Stalled Cases

566 age of oldest, in days gone by

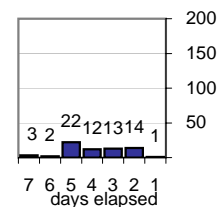
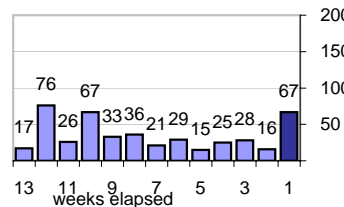
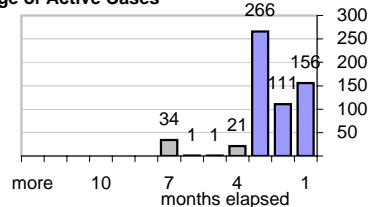
199 longest in days since any activity

## Pending Queue

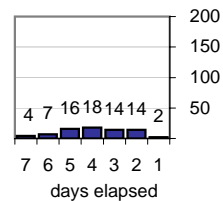
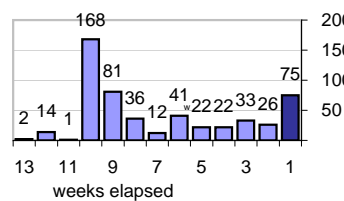
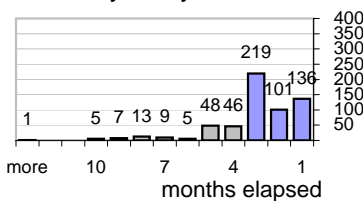
Currently Open



### Age of Active Cases



### Time Since Any Activity in Active Cases

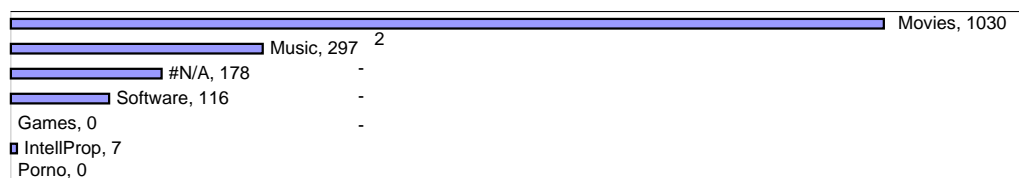


## Complaint Types

### Top Complaint Types over 6 months

Copyright Infringement 1,628

### Sources of Copyright Infringement Complaints



### Relative Volume of Copyright DMCA Cases, year to year

