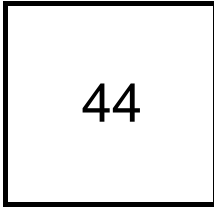


Creating Cases

Created Last Week



Cases Created Per Day

Average	Max
8.80	21 last week
10.15	38 6 weeks
10.23	81 6 months

Total Last Week

44 opened
33 closed

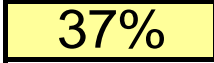
Month so far

88 opened
34 closed

Pending Cases as of
5/14/2007

Closing Cases

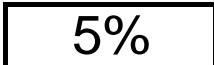
7 or more days



1 to 7 days

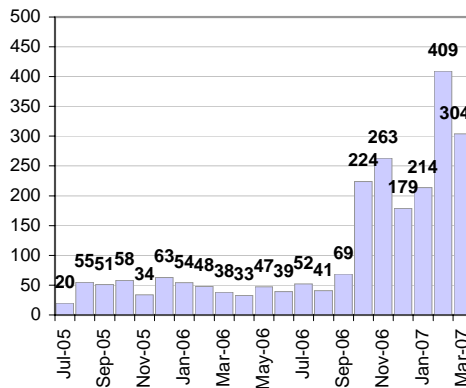


< 24 hours



(over the last six weeks)

Cases Created Per Month



Pending Queue over the last 6 months



Net effect over six months:

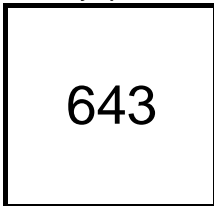
578 ↑

Stalled Cases

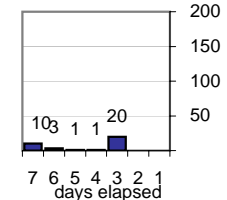
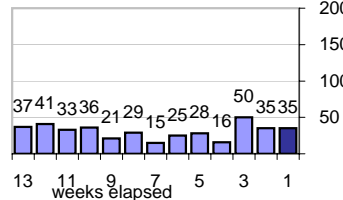
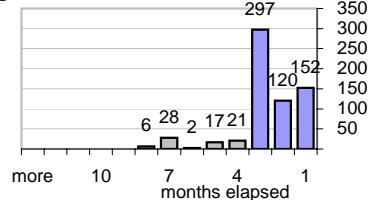
587 age of oldest, in days gone by
220 longest in days since any activity

Pending Queue

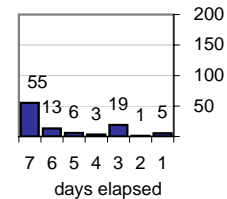
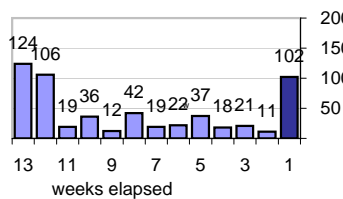
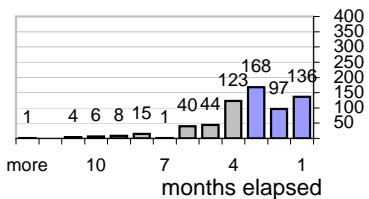
Currently Open



Age of Active Cases



Time Since Any Activity in Active Cases



Complaint Types

Top Complaint Types over 6 months

Copyright Infringement 1,452

Sources of Copyright Infringement Complaints



Relative Volume of Copyright DMCA Cases, year to year

