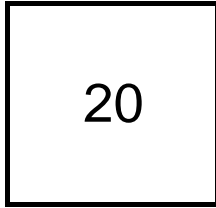


Creating Cases

Created Last Week



Cases Created Per Day

Average	Max
4.00	8 last week
9.32	38 6 weeks
10.13	81 6 months

Total Last Week

20 opened
23 closed

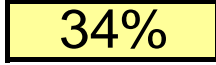
Month so far

108 opened
56 closed

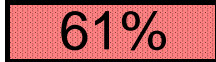
Pending Cases as of
5/21/2007

Closing Cases

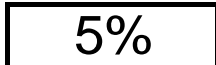
7 or more days



1 to 7 days

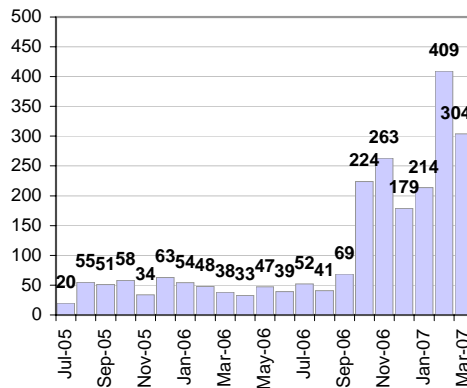


< 24 hours

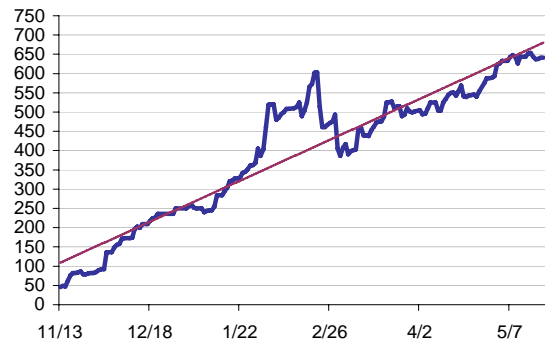


(over the last six weeks)

Cases Created Per Month



Pending Queue over the last 6 months



Net effect over six months:

595 ↑

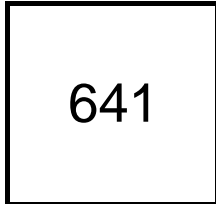
Stalled Cases

594 age of oldest, in days gone by

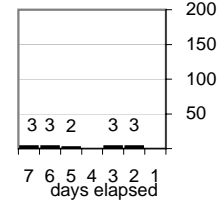
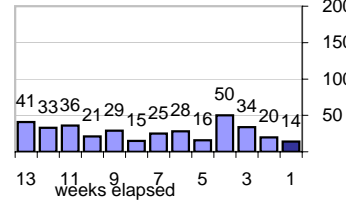
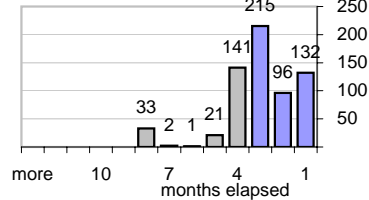
227 longest in days since any activity

Pending Queue

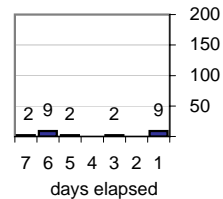
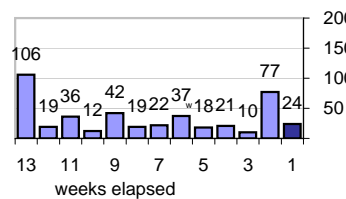
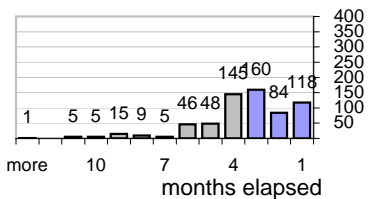
Currently Open



Age of Active Cases



Time Since Any Activity in Active Cases

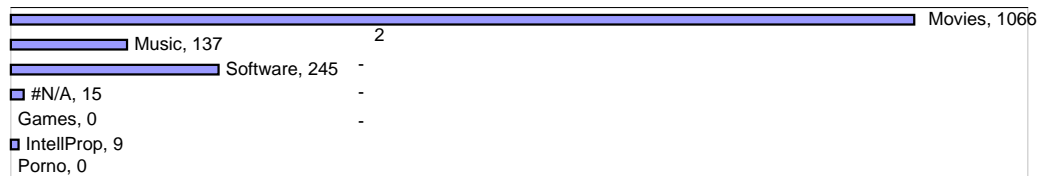


Complaint Types

Top Complaint Types over 6 months

Copyright Infringement 1,472

Sources of Copyright Infringement Complaints



Relative Volume of Copyright DMCA Cases, year to year

