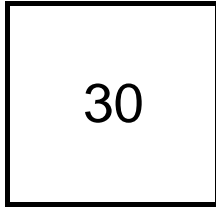


## Creating Cases

Created Last Week



## Cases Created Per Day

Average	Max
4.29	10 last week
7.74	30 6 weeks
9.95	81 6 months

## Total Last Week

30 opened  
1 closed

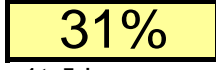
## Month so far

138 opened  
57 closed

Pending Cases as of  
5/28/2007

## Closing Cases

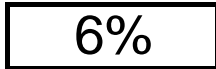
7 or more days



1 to 7 days

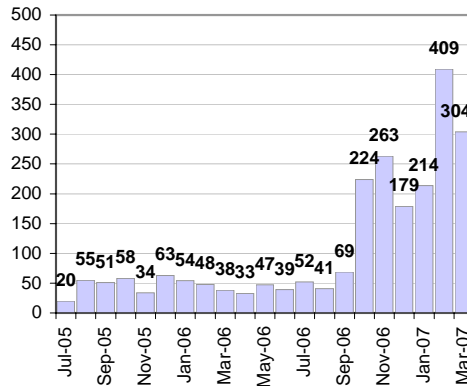


< 24 hours

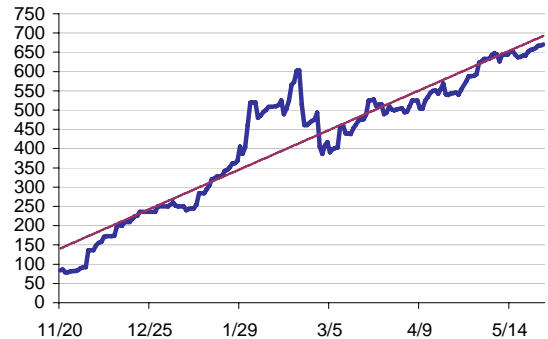


(over the last six weeks)

## Cases Created Per Month



## Pending Queue over the last 6 months



Net effect over six months:

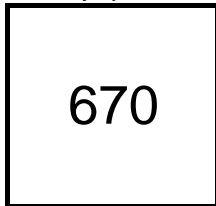
586 ↑

## Stalled Cases

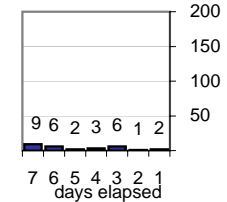
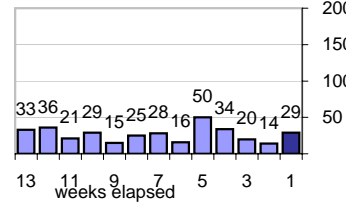
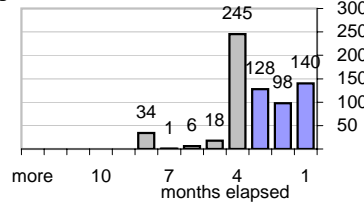
601 age of oldest, in days gone by  
234 longest in days since any activity

## Pending Queue

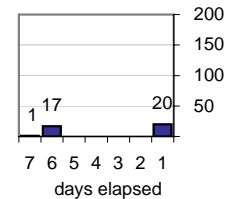
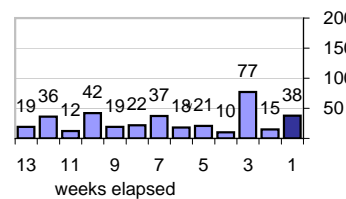
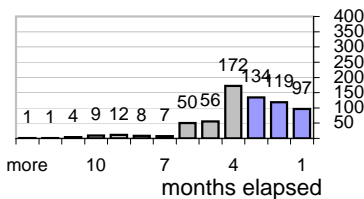
Currently Open



## Age of Active Cases



## Time Since Any Activity in Active Cases

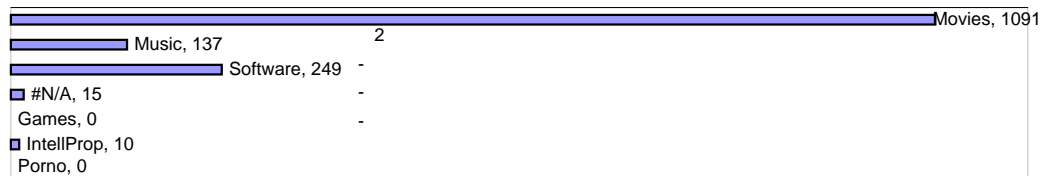


## Complaint Types

### Top Complaint Types over 6 months

Copyright Infringement 1,502

### Sources of Copyright Infringement Complaints



## Relative Volume of Copyright DMCA Cases, year to year

