

Creating Cases

Created Last Week

13

Cases Created Per Day

Average	Max
3.25	6 last week
5.83	30 6 weeks
9.83	81 6 months

Total Last Week

13 opened
0 closed

Month so far

17 opened
9 closed

Pending Cases as of
6/11/2007

Closing Cases

7 or more days

54%

1 to 7 days

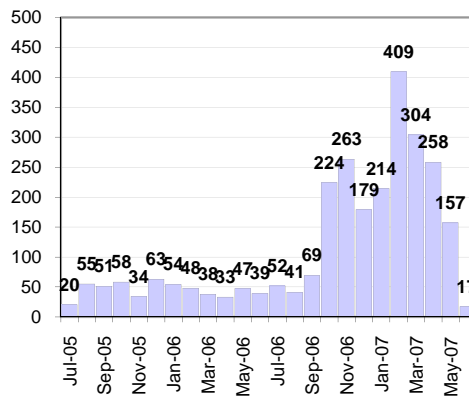
45%

< 24 hours

2%

(over the last six weeks)

Cases Created Per Month



Pending Queue over the last 6 months



Net effect over six months:

549 ↑

Stalled Cases

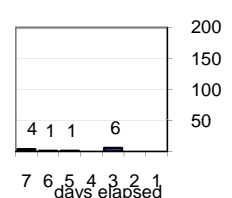
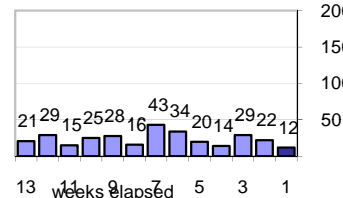
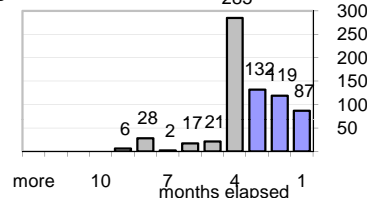
615 age of oldest, in days gone by
248 longest in days since any activity

Pending Queue

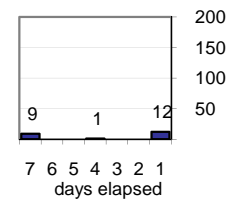
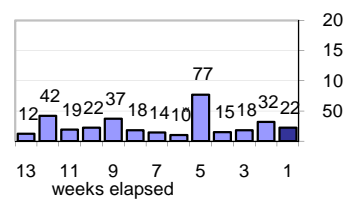
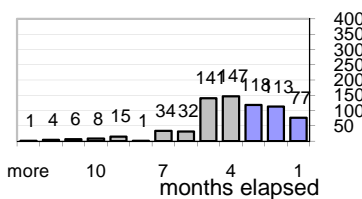
Currently Open

697

Age of Active Cases



Time Since Any Activity in Active Cases



Complaint Types

Top Complaint Types over 6 months

Copyright Infringement 1,359

Sources of Copyright Infringement Complaints



Relative Volume of Copyright DMCA Cases, year to year

