

## Creating Cases

Created Last Week

38

### Cases Created Per Day

Average	Max
7.60	17 last week
5.60	21 6 weeks
9.82	81 6 months

### Total Last Week

38 opened  
2 closed

### Month so far

55 opened  
11 closed

Pending Cases as of  
6/18/2007

## Closing Cases

7 or more days

54%

1 to 7 days

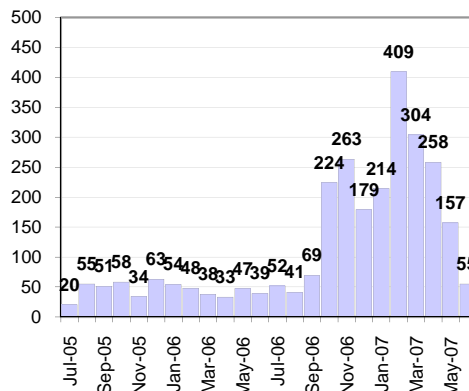
45%

< 24 hours

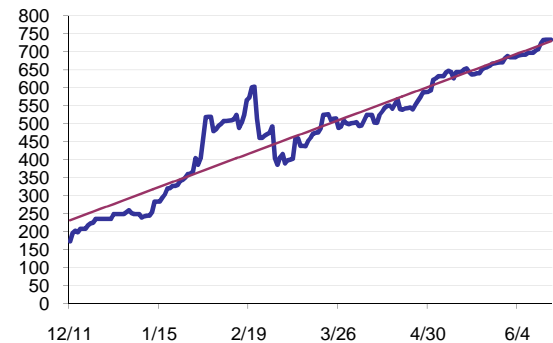
1%

(over the last six weeks)

### Cases Created Per Month



### Pending Queue over the last 6 months



Net effect over six months:

560 ↑

### Stalled Cases

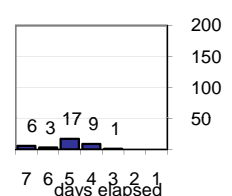
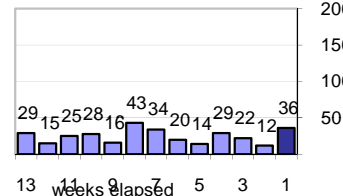
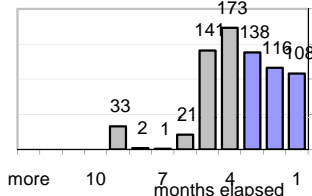
622 age of oldest, in days gone by  
255 longest in days since any activity

## Pending Queue

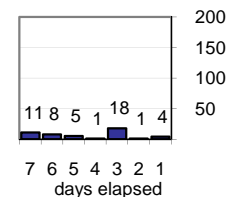
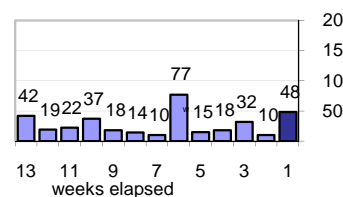
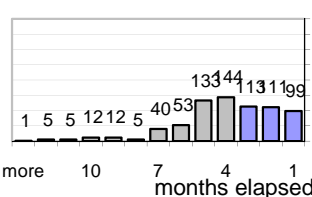
Currently Open

733

### Age of Active Cases



### Time Since Any Activity in Active Cases

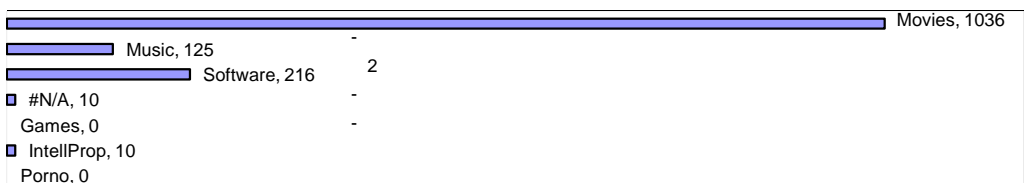


## Complaint Types

### Top Complaint Types over 6 months

Copyright Infringement 1,397

### Sources of Copyright Infringement Complaints



### Relative Volume of Copyright DMCA Cases, year to year

