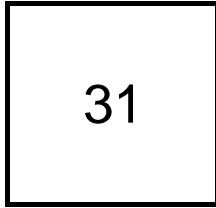


## Creating Cases

Created Last Week



### Cases Created Per Day

Average	Max
5.17	9 last week
5.00	17 6 weeks
9.65	81 6 months

### Total Last Week

31 opened  
2 closed

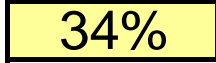
### Month so far

86 opened  
12 closed

Pending Cases as of  
6/25/2007

## Closing Cases

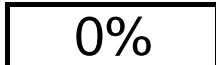
7 or more days



1 to 7 days

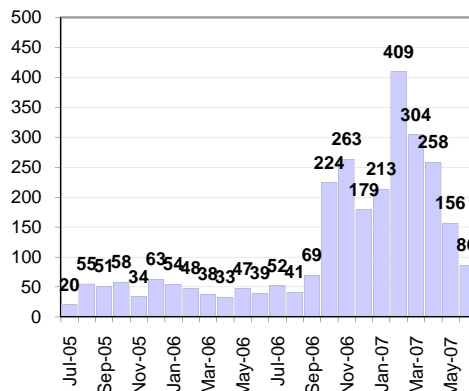


< 24 hours

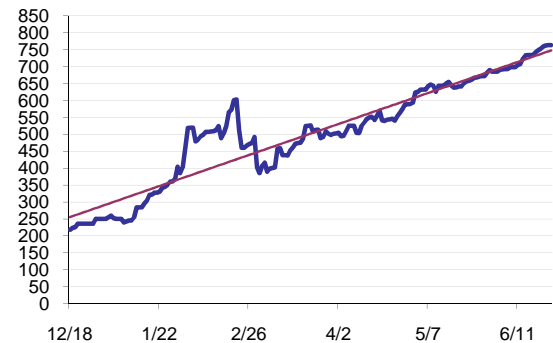


(over the last six weeks)

### Cases Created Per Month



### Pending Queue over the last 6 months



Net effect over six months:

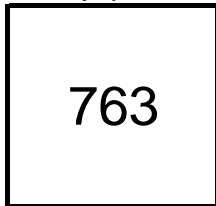
545 ↑

### Stalled Cases

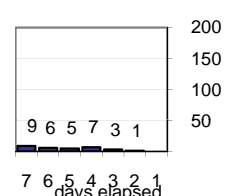
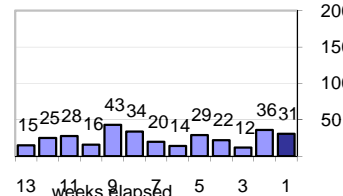
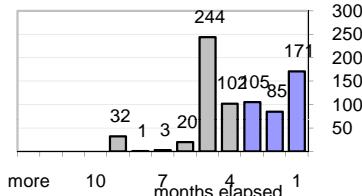
360 age of oldest, in days gone by  
262 longest in days since any activity

## Pending Queue

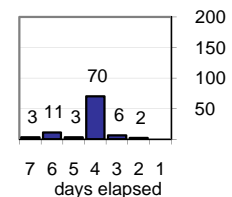
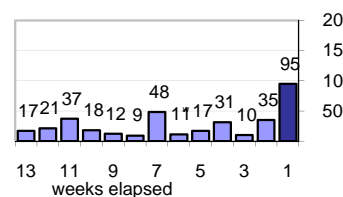
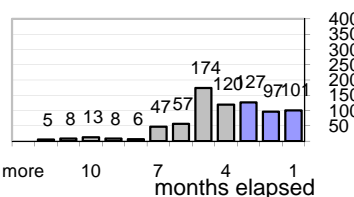
Currently Open



### Age of Active Cases



### Time Since Any Activity in Active Cases

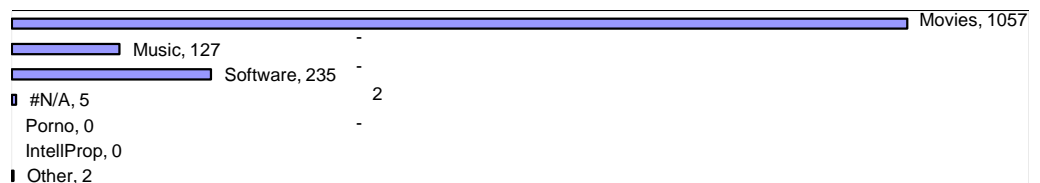


## Complaint Types

### Top Complaint Types over 6 months

Copyright Infringement 1,426

### Sources of Copyright Infringement Complaints



### Relative Volume of Copyright DMCA Cases, year to year

