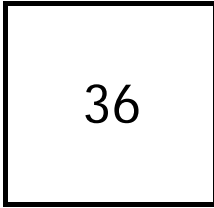


Creating Cases

Created Last Week



Cases Created Per Day

Average	Max
5.14	12 last week
3.39	12 6 weeks
3.32	43 6 months

Total Last Week

36 opened
3 closed

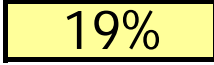
Month so far

80 opened
40 closed

Pending Cases as of
7/31/2006

Closing Cases

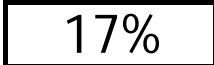
7 or more days



1 to 7 days

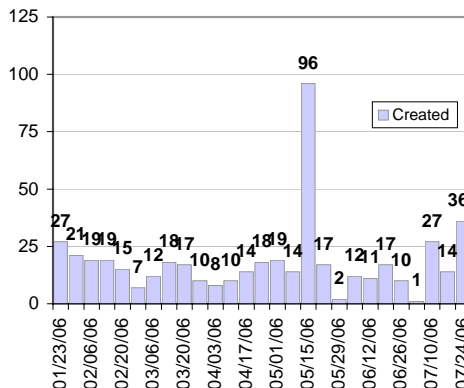


< 24 hours

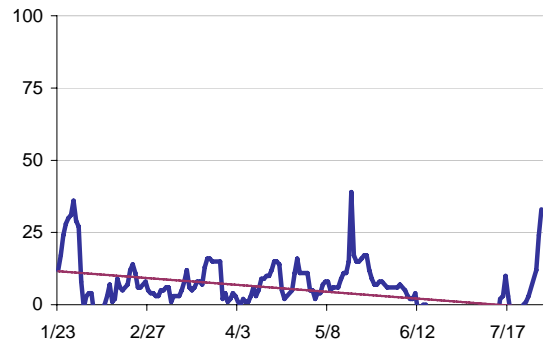


(over the last six weeks)

Cases Created Per Week, last six months



Pending Queue over the last 6 months



Net effect over six months:

21 ↑

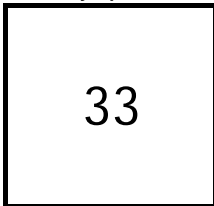
Stalled Cases

275 age of oldest, in days gone by

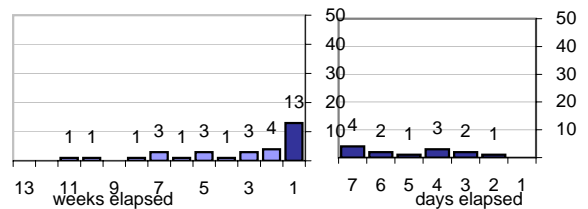
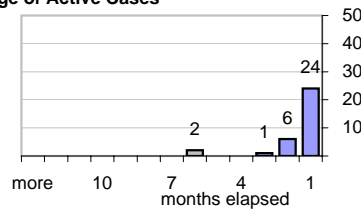
179 longest in days since any activity

Pending Queue

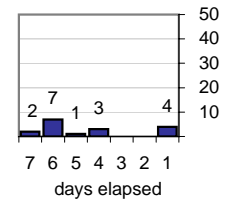
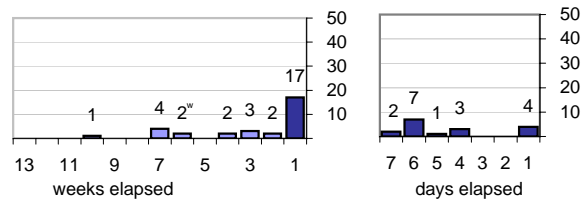
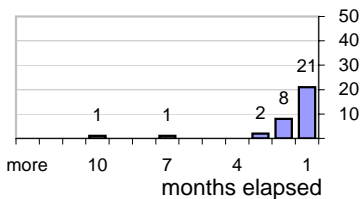
Currently Open



Age of Active Cases



Time Since Any Activity in Active Cases



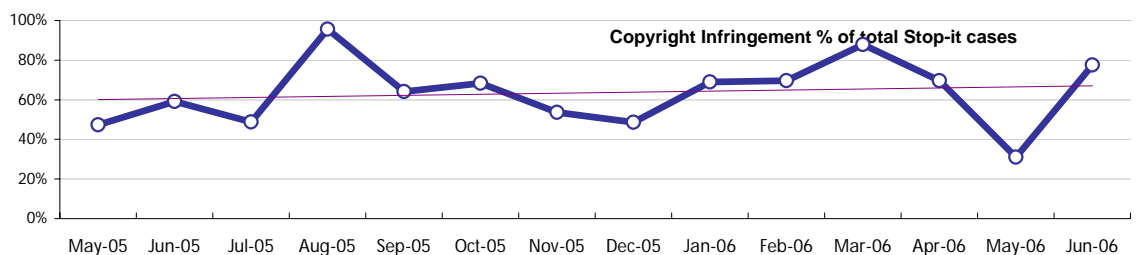
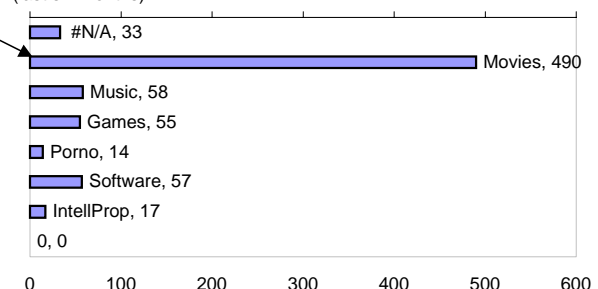
Complaint Types

Top 10 Complaint Types over 6 months

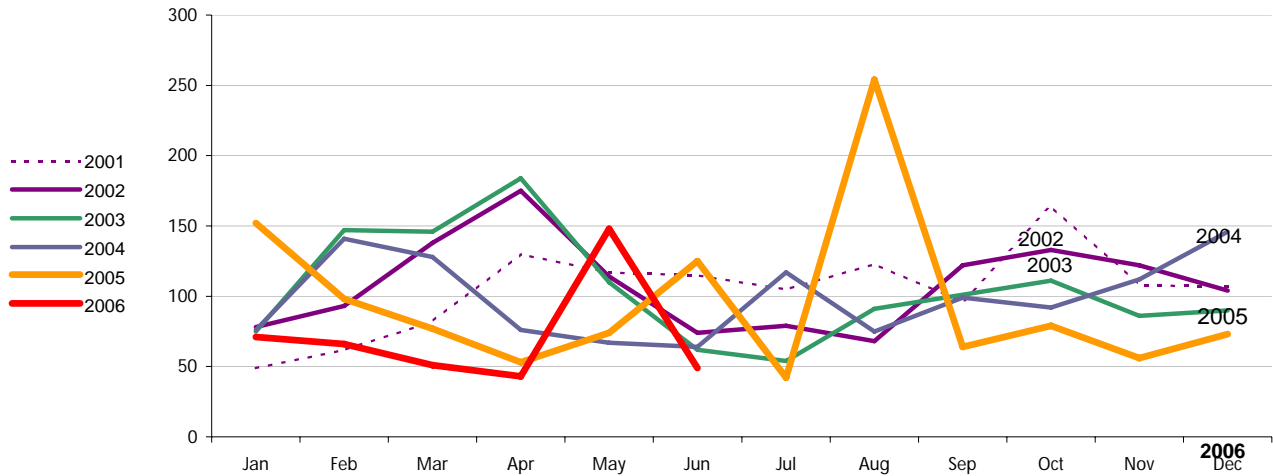
Copyright Infringement	666
Spam	165
Offensive Web Page	25
Misuse of MIT mail system	8
Forged Email	1
non-complaint	9
Other	20
Abuse of printers: multiple copies	6
Abuse of Workstation	7
Commercial use	6

Sources of Copyright Infringement Complaints

(last six months)



Relative Volume of StopIt Cases, year to year for at least five years



Volume of StopIt Cases, month to month for at least five years

