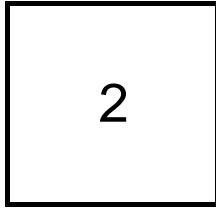


## Creating Cases

Created Last Week



### Cases Created Per Day

| Average | Max         |
|---------|-------------|
| 1.00    | 1 last week |
| 1.15    | 2 6 weeks   |
| 2.51    | 43 6 months |

### Total Last Week

2 opened  
3 closed

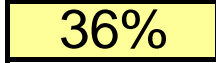
### Month so far

2 opened  
11 closed

Pending Cases as of  
10/9/2006

## Closing Cases

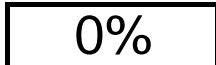
7 or more days



1 to 7 days

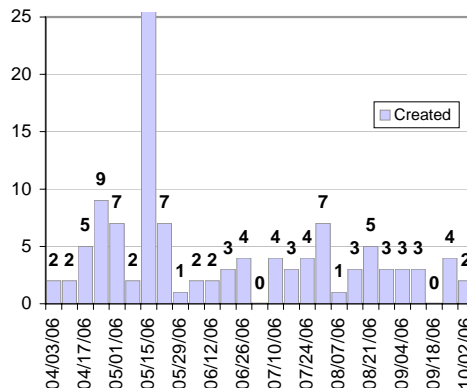


< 24 hours

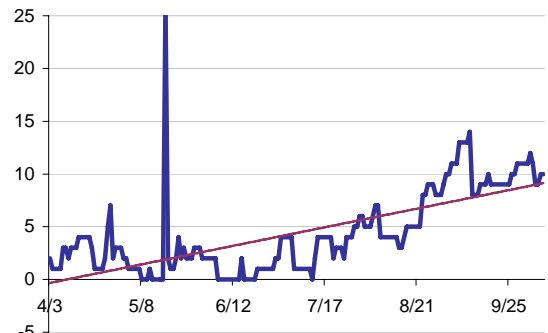


(over the last six weeks)

### Cases Created Per Week, last six months



### Pending Queue over the last 6 months



Net effect over six months:

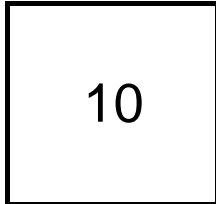
8 ↑

### Stalled Cases

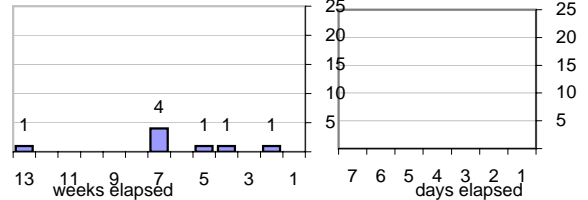
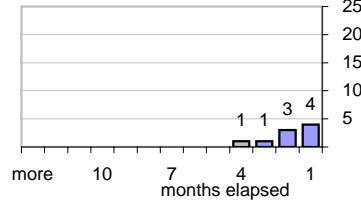
438 age of oldest, in days gone by  
118 longest in days since any activity

## Pending Queue

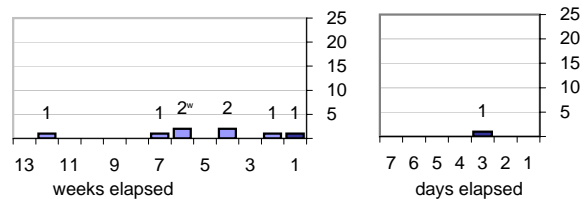
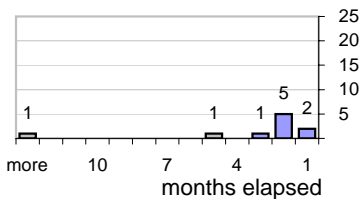
Currently Open



### Age of Active Cases



### Time Since Any Activity in Active Cases



## Complaint Types

### Top 10 Complaint Types over 6 months

|                                    |    |
|------------------------------------|----|
| Spam                               | 76 |
| Offensive Web Page                 | 11 |
| Misuse of MIT mail system          | 1  |
| Forged Email                       | 1  |
| non-complaint                      | 3  |
| Other                              | 9  |
| Abuse of printers: multiple copies | 3  |
| Abuse of Workstation               | 2  |
| Commercial use                     | 2  |
| Spam with virus payload            | -  |

## Historical View

### Relative Volume of StopIt Cases, year to year for at least five years

