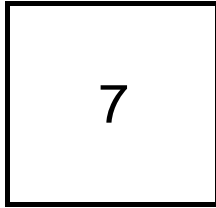


## Creating Cases

Created Last Week



Cases Created Per Day

Average	Max
1.75	3 last week
8.10	25 6 weeks
6.85	25 6 months

Total Last Week

7 opened  
0 closed

Month so far

136 opened  
174 closed

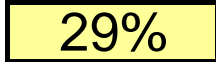
Pending Cases as of 1/1/2010

## Closing Cases

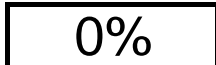
7 or more days



1 to 7 days

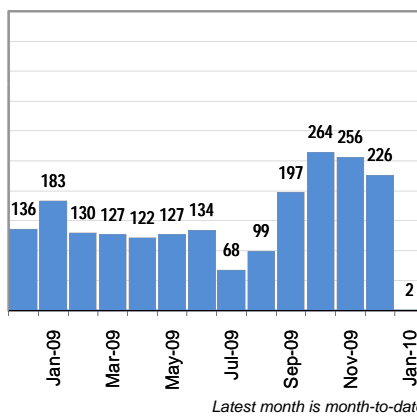


< 24 hours

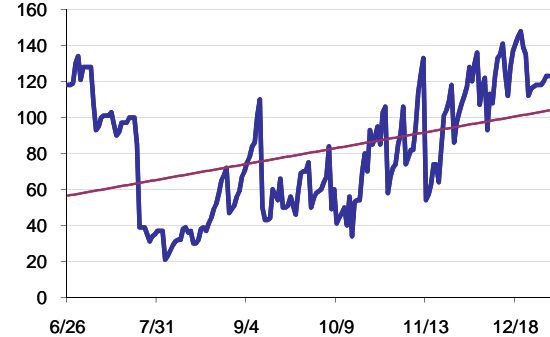


(over the last six weeks)

Cases Created Per Month



Pending Queue over the last 6 months



Net effect over six months:

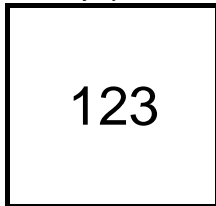
5 ↑

Stalled Cases

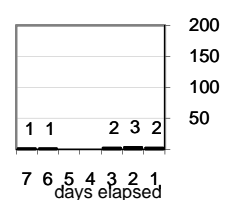
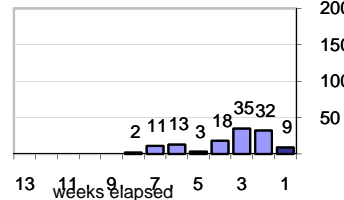
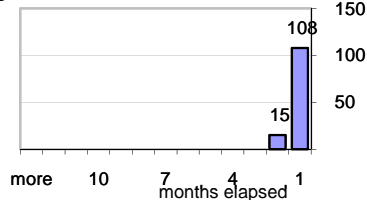
51 age of oldest, in days gone by  
51 longest in days since any activity

## Pending Queue

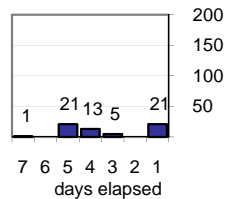
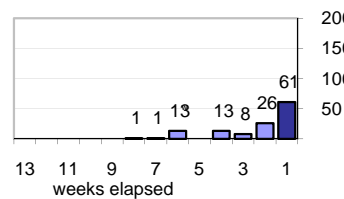
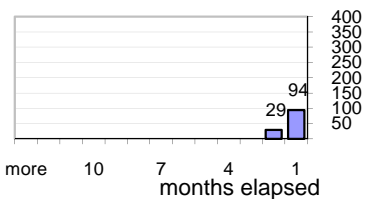
Currently Open



Age of Active Cases



Time Since Any Activity in Active Cases

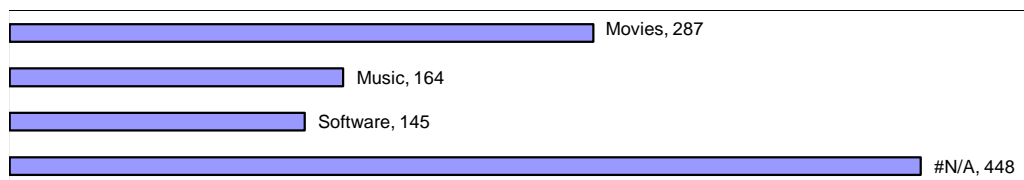


## Complaint Types

Top Complaint Types over 6 months

Copyright Infringement 1,044

Sources of Copyright Infringement Complaints



Relative Volume of Copyright DMCA Cases, year to year

