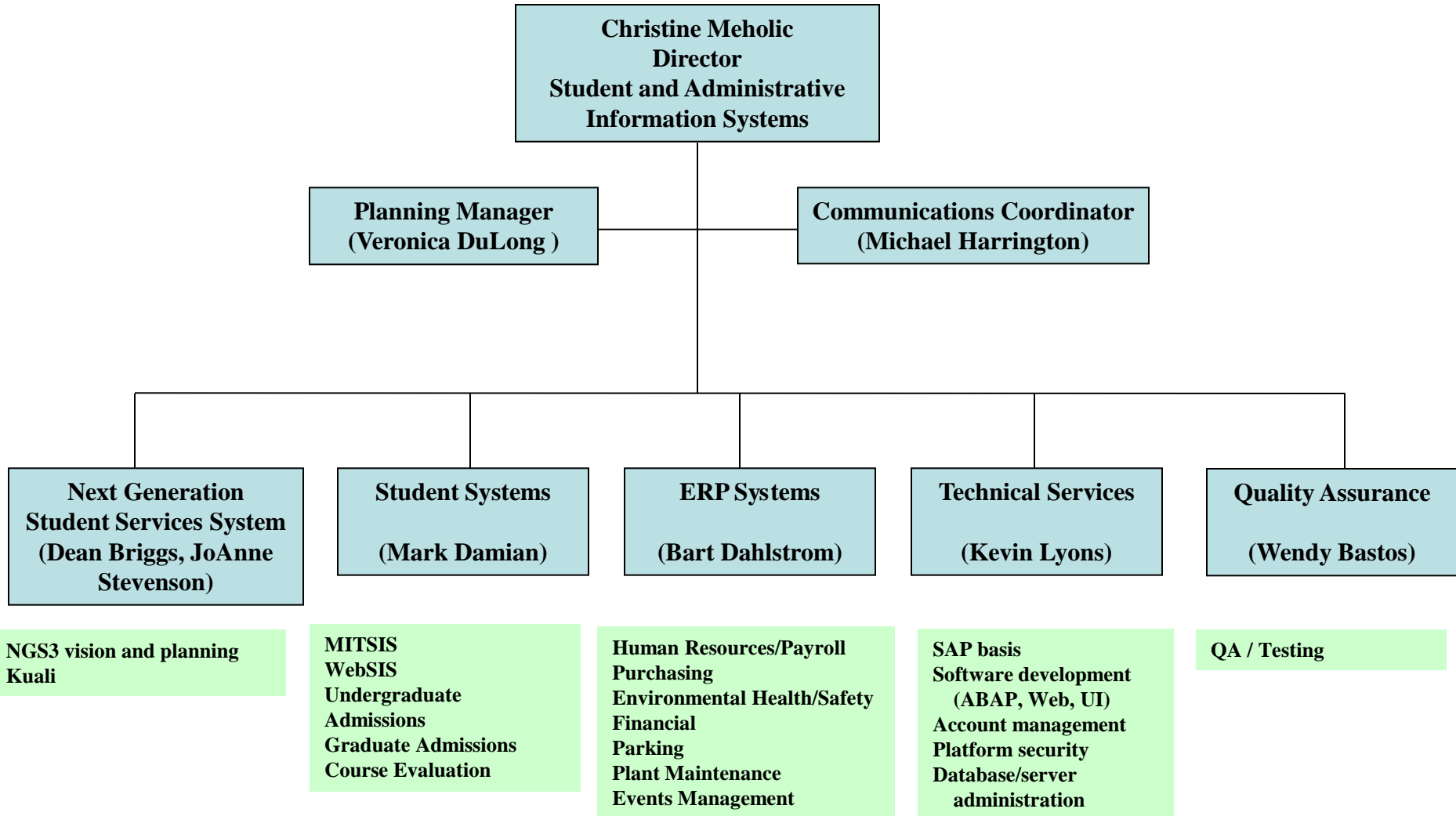




Student and Administrative Information Systems





Student and Administrative Information Systems

Christine Meholic
Director
Student and Administrative Information Systems

Planning Manager
(Veronica DuLong)

Communications Coordinator
(Michael Harrington)

Next Generation Student Services System
(Dean Briggs, JoAnne Stevenson)

Student Systems
(Mark Damian)

Academic Services
(Matthew Burfeind)

Common Services
(Lori Singer)

Admissions
(Eamon Kearns)

Student Financial Services
(Janet Sahlstrom)

Next Generation Student System
Vision and Planning

Registrar
Undergrad Advising & Academic Programming
Housing
Athletics
Faculty Support

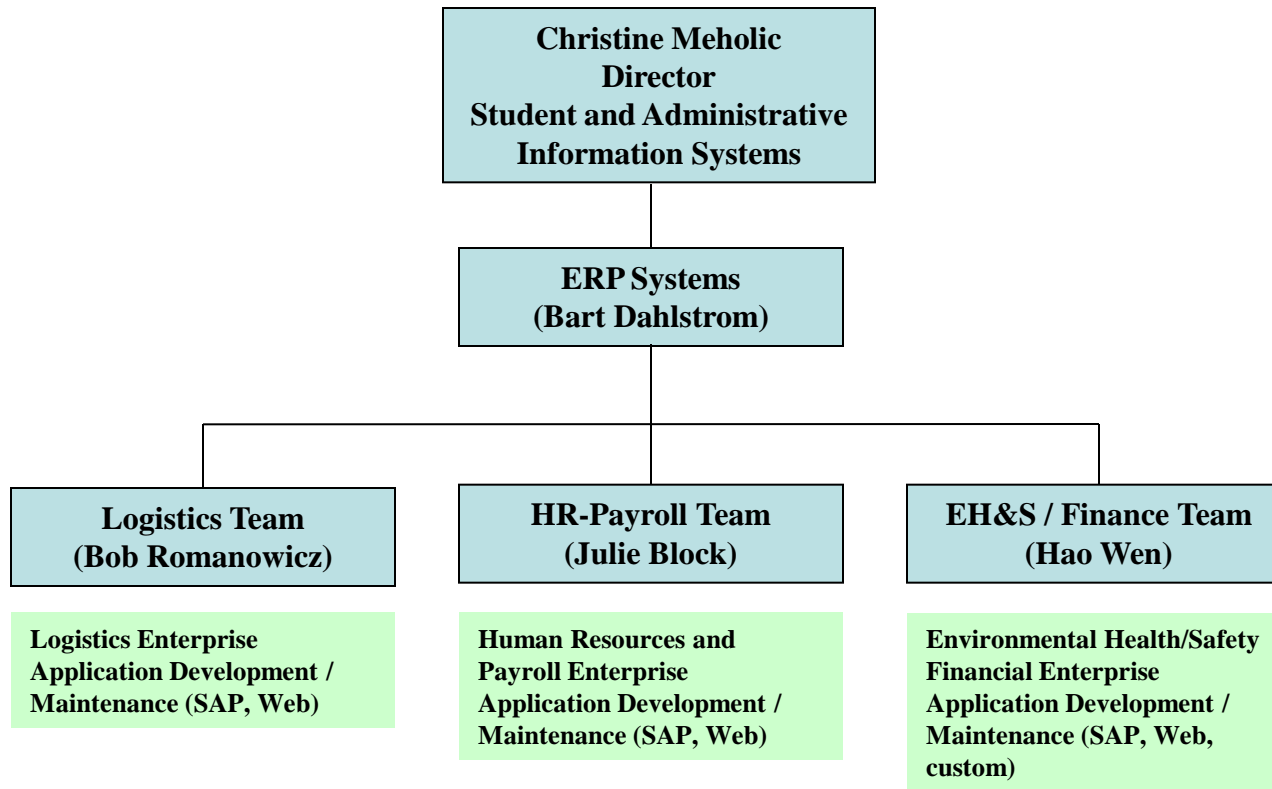
Cross Client Support
Project Mgmt.
Resource Methodology
Technical Expertise
Process Management

Undergrad Admissions (Phase I & II)
Educational Counseling web site
Grad Admissions
Housing Dining
Association of Student Activities
International Students Office

Student Financial Services
Financial Aid
Student Employment
MITSIS Feed
Gross Pay Timesheet
Load from SAP to MITSIS
Web Grad Aid
Electronic Student Personnel Action Form

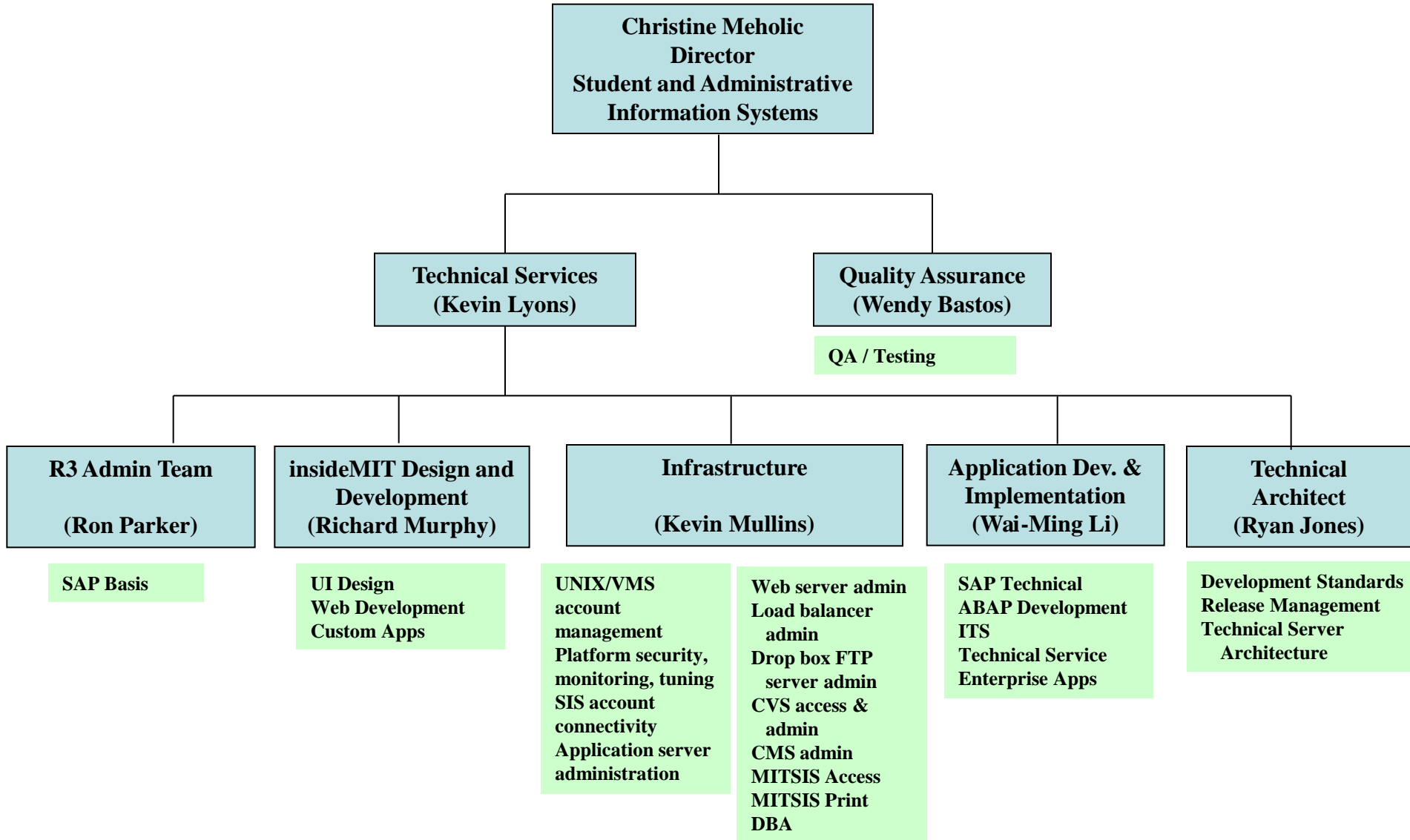


Student and Administrative Information Systems



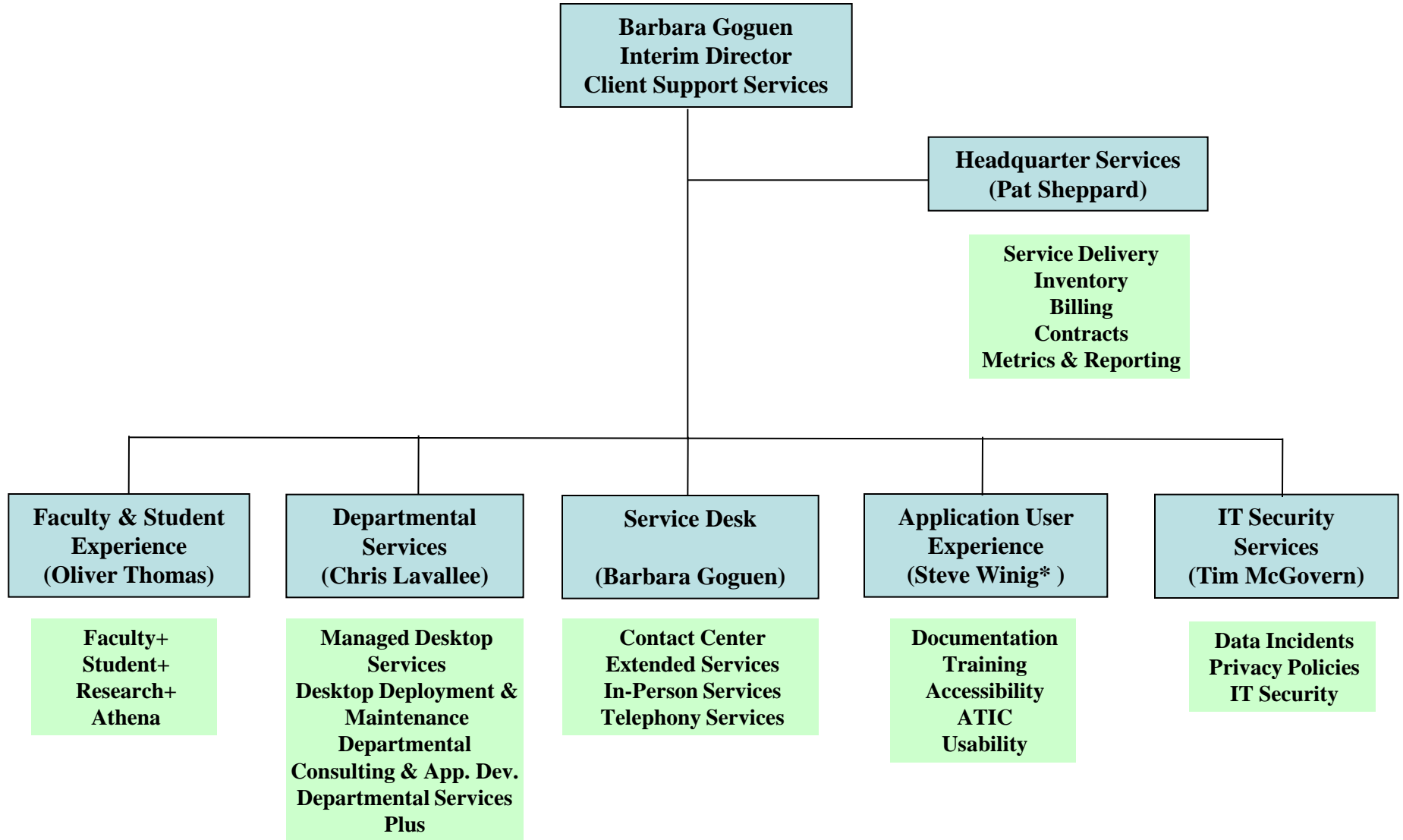


Student and Administrative Information Systems





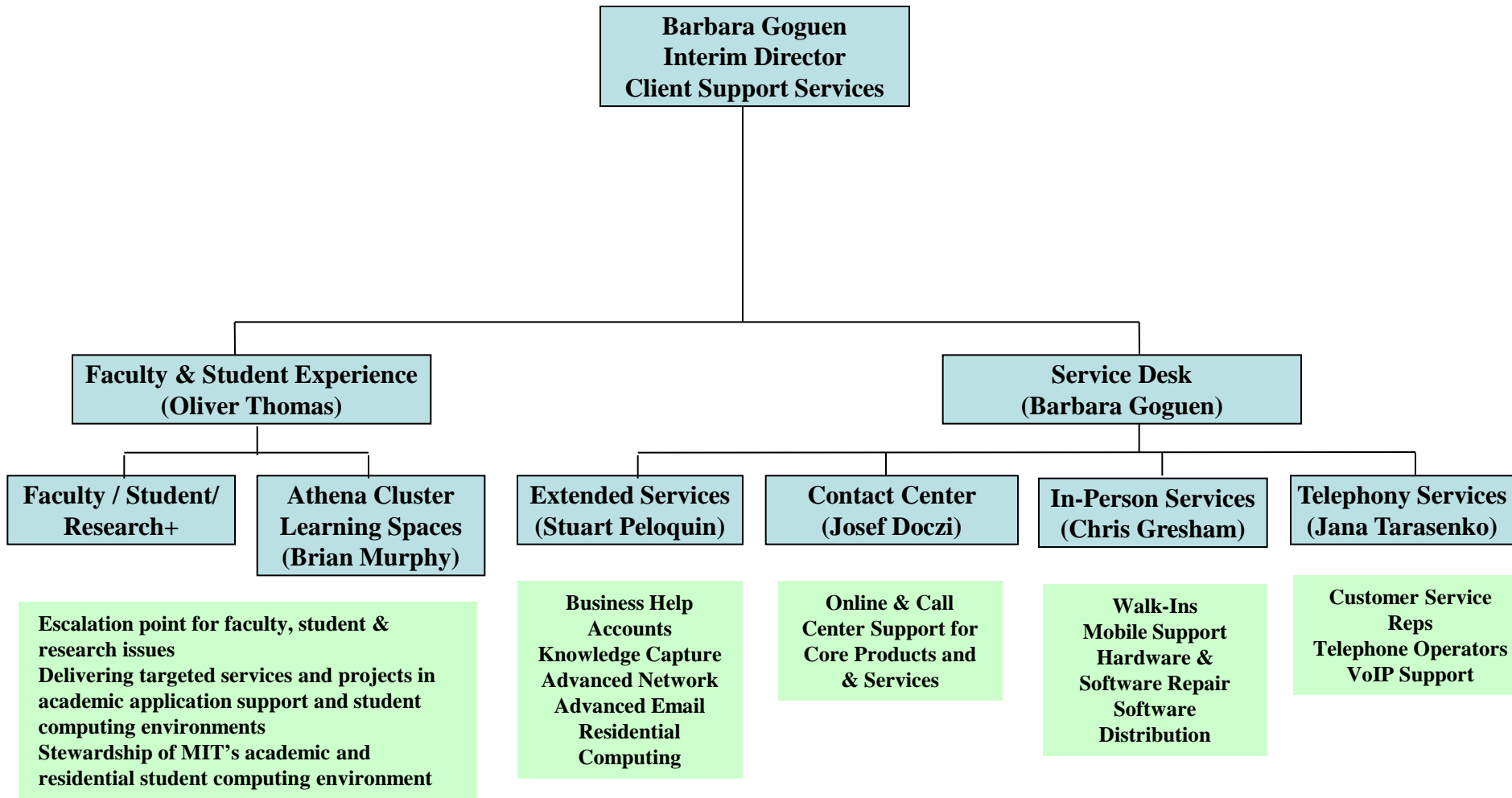
Client Support Services



* Interim Assignment



Client Support Services





Client Support Services

**Barbara Goguen
Interim Director
Client Support Services**

**Departmental Services
(Chris Lavallee)**

**IT Security Services
(Tim McGovern)**

**Managed Desktop
Services
(Open)**

**Desktop Deployment
& Maintenance
(Chuck King)**

**Departmental
Services Plus
(Pat Curtis)**

**Departmental
Consulting & App. Dev.
(Jeff Reed)**

**IT Security Risk
Assessment
IT Security Incident Detection
& Response
IT Security Awareness
Data Incident Response
Coordination
Digital Copyright Issues on the
MIT Network
IS&T IT Policy Coordination
Stopit Incidents Coordination**

**Local Desktop
Support**

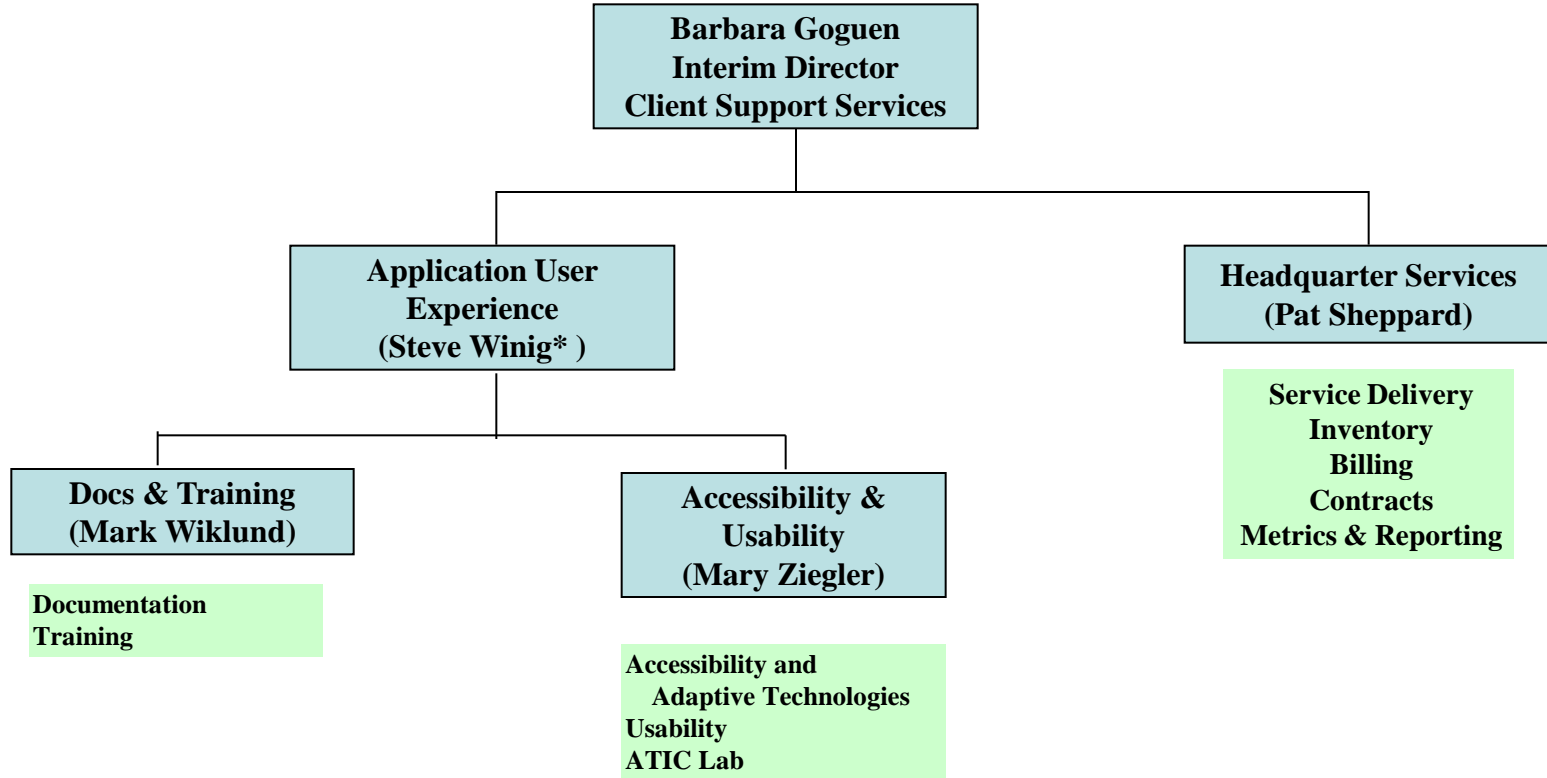
**Admin IT Program
Admin Desktop
Deployments**

**Departmental
Services Plus
(Premiere Level User
Support)**

**Departmental Consulting
and Application
Development**

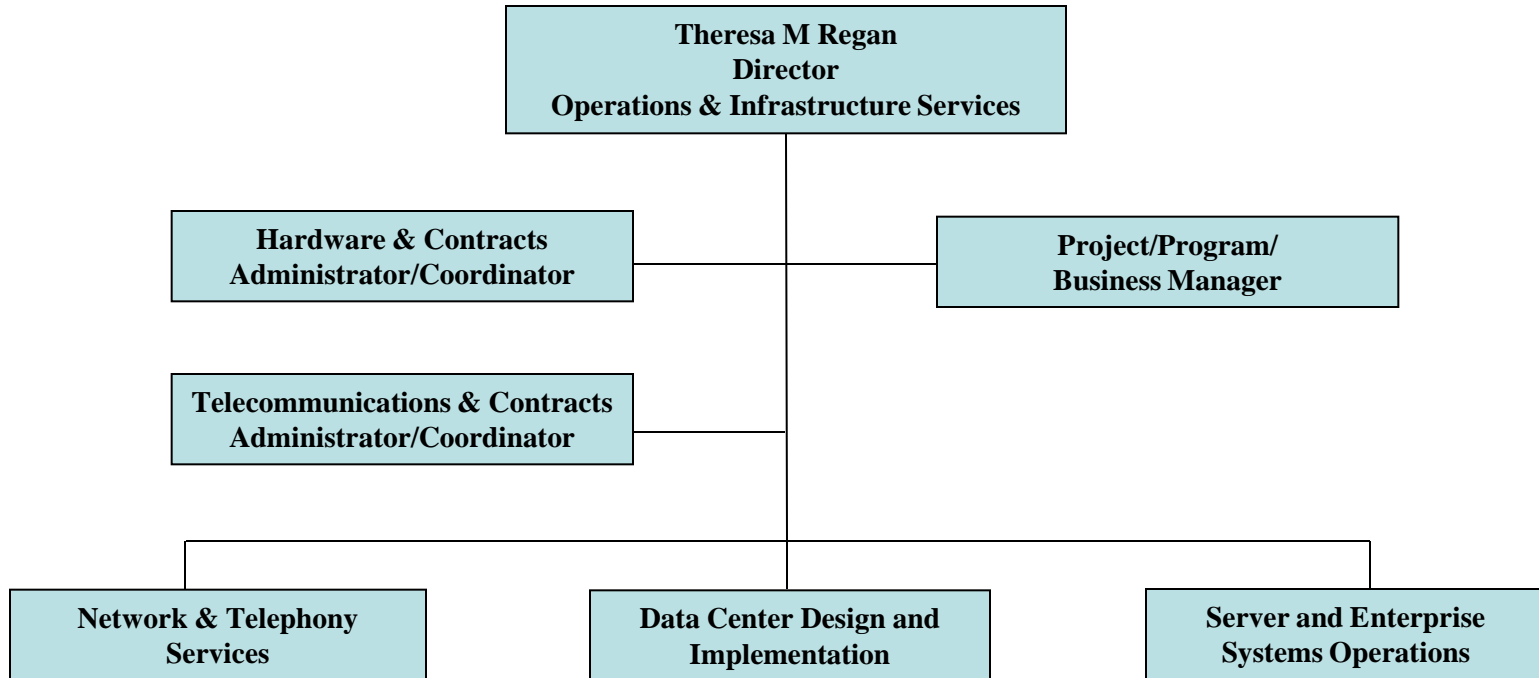


Client Support Services



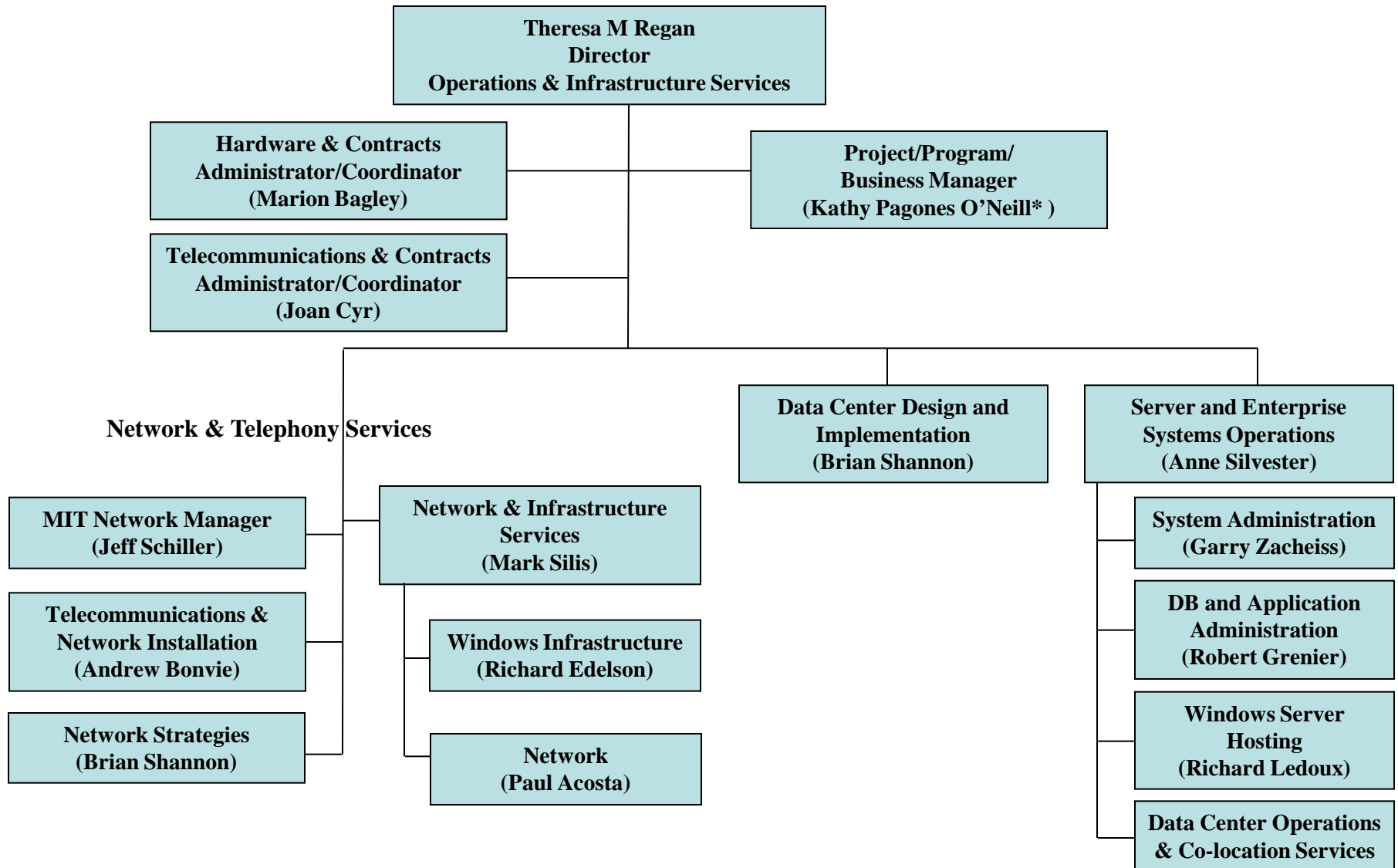


Operations & Infrastructure Services





Operations & Infrastructure Services

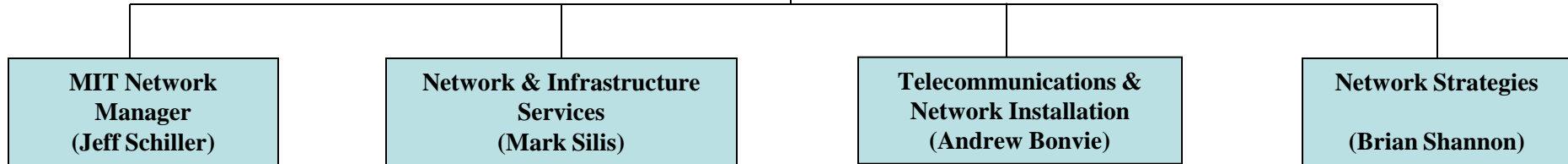


* Interim Assignment



Operations & Infrastructure Services

Theresa M Regan
Director
Operations & Infrastructure Services



Network Services Dev'l
Internal Standards
Network and
Information Security

Network Architecture
External Connectivity and Relations
Central Windows Infrastructure
Citrix Environment
MIT Network
External connectivity, campus backbone, connectivity to remote MIT sites
Network Infrastructure Svcs
MIT EMAIL and Calendar Svcs
MIT Web Services
MIT.EDU Namespace
Authentication & Authorization
MIT Remote Access Services
VoIP and Voice Mail
Carrier Provisioning
Cable Television

Physical Layer Consulting
Jack Installations
MITnet Activations
Wireless Installations
Fiber Circuit Installation
IP Addressing
Network Upgrades
Network Troubleshooting
IS&T Physical Layer
Maintenance and Repair
5E Switch Mgt

Data Center Planning
IS&T outside plant planning and installation
IS&T outside plant maintenance, relocation and coordination



Operations & Infrastructure Services

Theresa M Regan
Director
Operations & Infrastructure Services

Data Center Design and Implementation
(Brian Shannon)

Server and Enterprise Systems Operations
(Anne Silvester)

Data Center Planning

Systems Administration
(Garry Zacheiss)

Database and Application Admin
(Robert Grenier)

Windows Server Hosting
(Rich Ledoux)

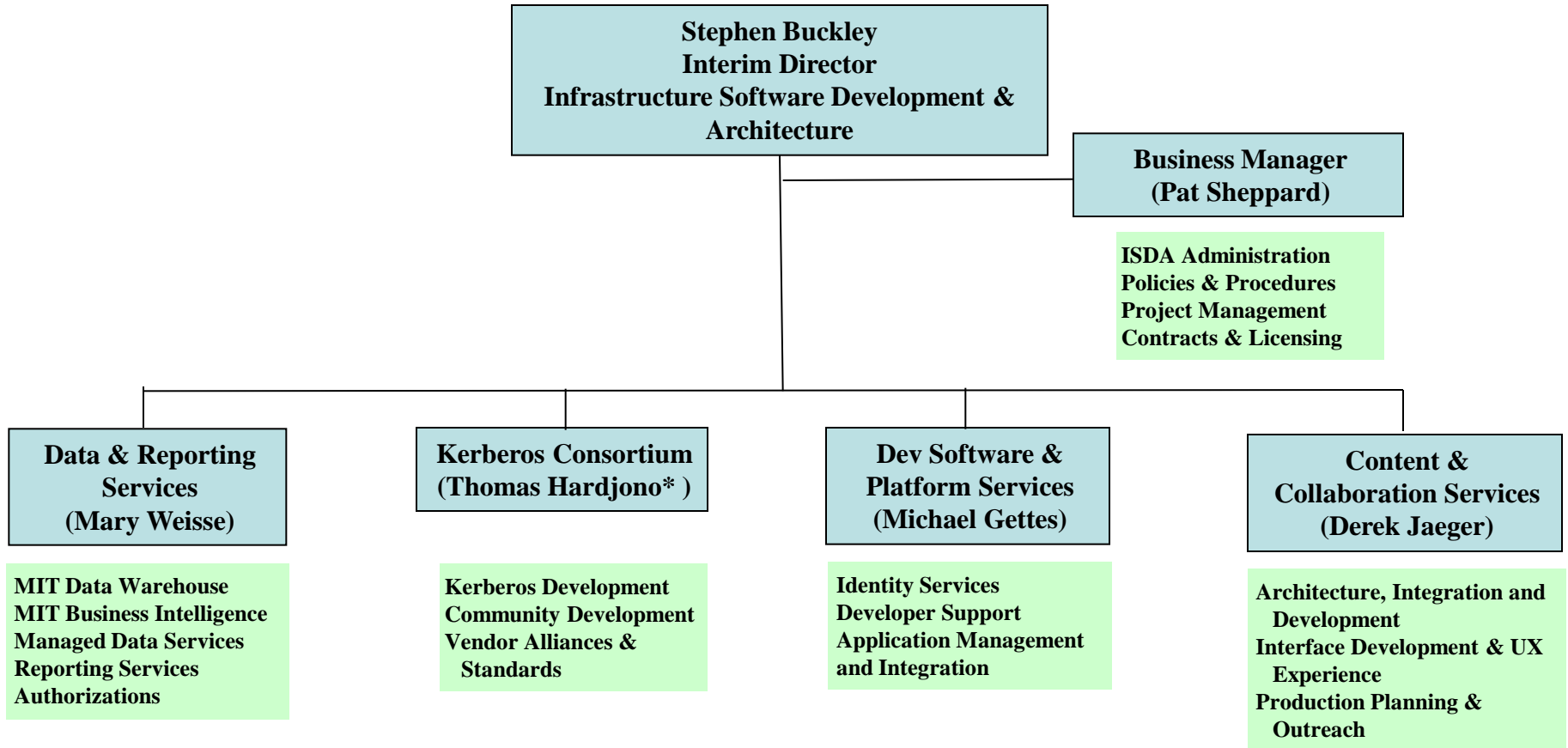
Data Center Operations & Co-location Services

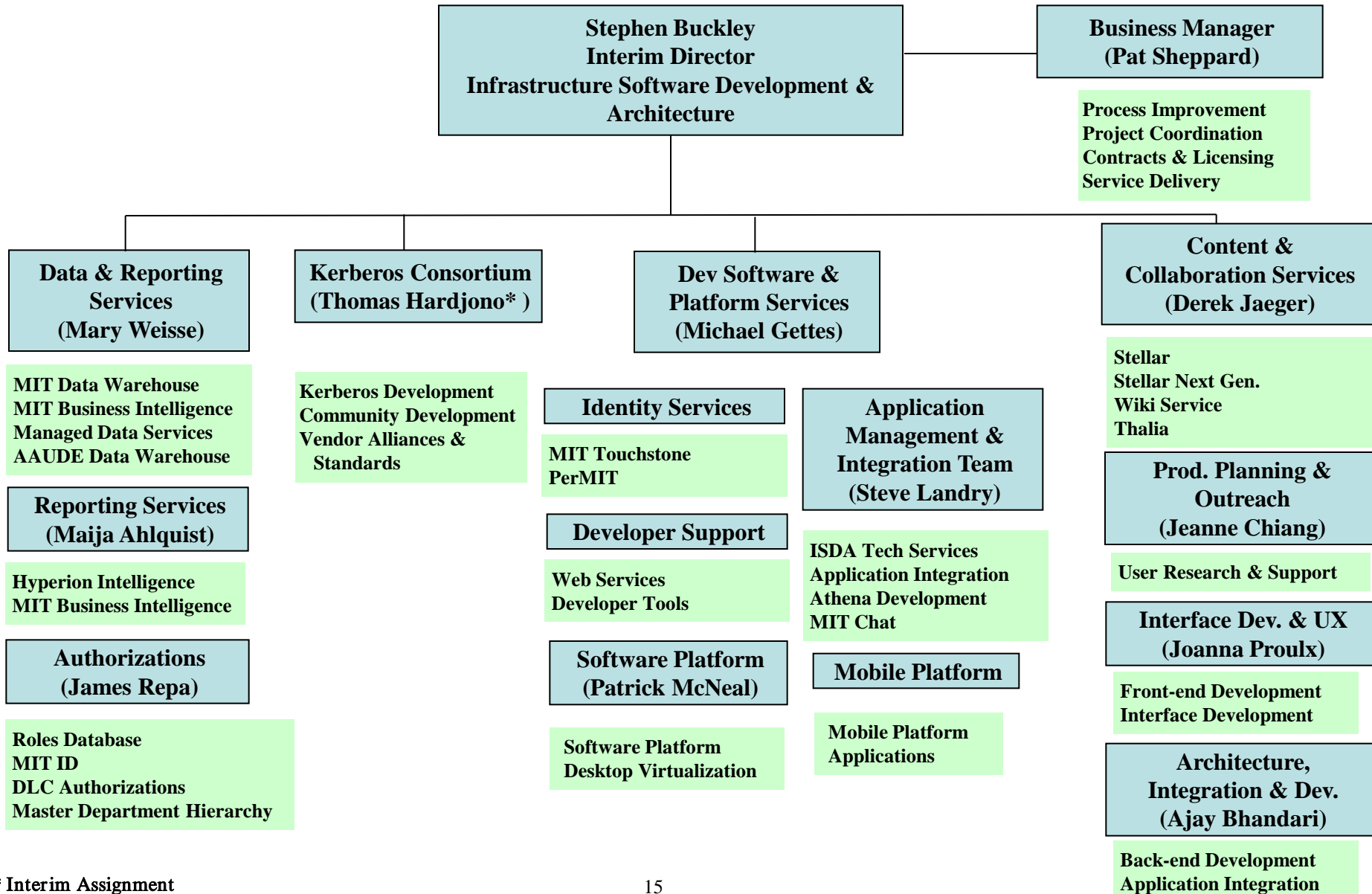
Install and maintain centrally managed servers and software
Supported environments, technologies and software
Manage Tivoli Storage Management (TSM) and Netback-up Applications

Maintain centrally managed Databases and Applications, including EDI services

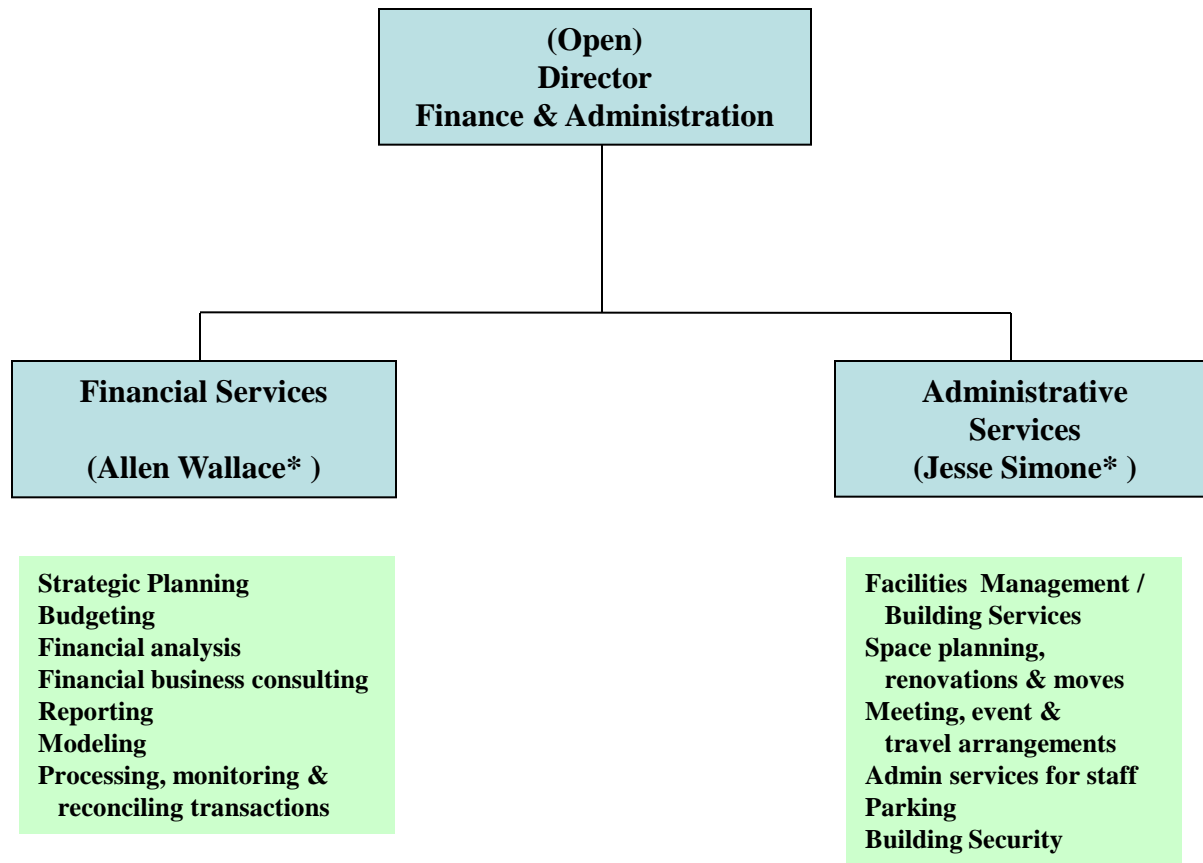
Provide a range of Co-location services, including, installation and maintenance of centrally managed windows servers.

Data Center Mgt (W91, E40, W20, OC11)
Server Management (hardware, de/installation, console monitoring, tape mounting for backups)
Print services
Co-location Services





* Interim Assignment





**Jesse Simone
Director
Human Resources**

**Recruitment and Staffing
Employee Relations
Performance Management
Training and Instruction
Organizational Development
Rewards and Recognition
Benefits, Compensation, and Policy Administration**