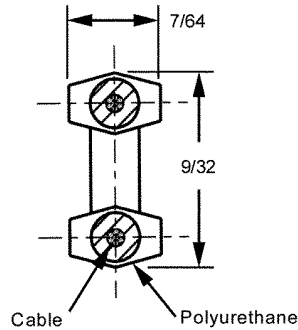
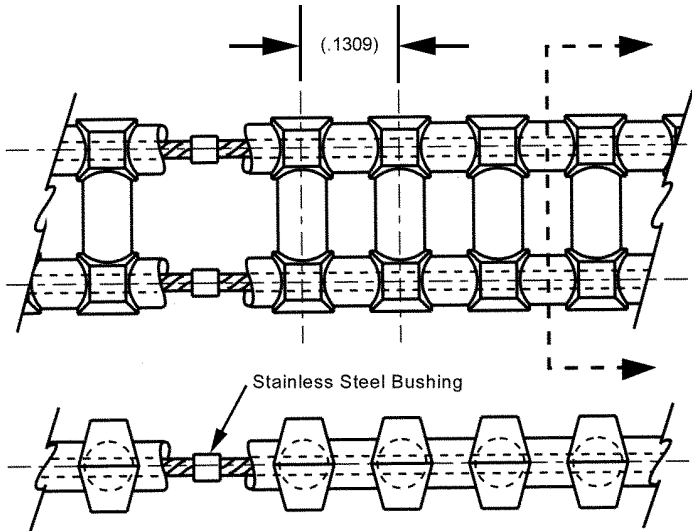


# GEAR DRIVE CHAINS

PITCH	CIRCULAR PITCH	MATERIALS	BERG'S ® NAME	SPROCKET
24	.1309	Polyurethane (Red) 1/32" Dia. Stainless Steel Cable*	<b>Flex-E-Gear®</b>	Operates with 24A and 24B series.



- For Field Splice Kit order 24GCF-7.
- \* Available with Aramid Core. See page VII for alternative belt construction or reverse bending applications.
- \*\*Reduce operating load rating by 50% for field splices.

STOCK NO.	NO. OF PITCHES	LENGTH (Ref.)
24GCF-50-E	50	6.545
24GCF-52-E	52	6.807
24GCF-54-E	54	7.069
24GCF-56-E	56	7.330
24GCF-58-E	58	7.592
24GCF-60-E	60	7.854
24GCF-62-E	62	8.116
24GCF-64-E	64	8.378
24GCF-66-E	66	8.639
24GCF-68-E	68	8.901
24GCF-70-E	70	9.163
24GCF-75-E	75	9.817
24GCF-80-E	80	10.472
24GCF-85-E	85	11.126
24GCF-90-E	90	11.781
24GCF-95-E	95	12.435
24GCF-100-E	100	13.090
24GCF-105-E	105	13.744
24GCF-110-E	110	14.399
24GCF-115-E	115	15.053
24GCF-120-E	120	15.708
24GCF-130-E	130	17.017
24GCF-140-E	140	18.326
24GCF-150-E	150	19.635
24GCF-160-E	160	20.944
24GCF-170-E	170	22.253
24GCF-180-E	180	23.562
24GCF-190-E	190	24.871
24GCF-200-E	200	26.180
24GCF-220-E	220	28.798
24GCF-240-E	240	31.416
24GCF-260-E	260	34.034
24GCF-280-E	280	36.652
24GCF-300-E	300	39.270
24GCF-320-E	320	41.888
24GCF-380-E	380	49.742
24GCF-420-E	420	54.978

- Infinite Lengths
- Weight .14 oz./ft
- Positive Drive
- Zero Backlash
- No Lubrication
- Silent Drive
- Extra Strong
- 90A Durometer
- Ultimate Tensile Strength 100 lbs. (10lbs./Pin) when belt is used in open loop configuration (without splice, no crimp bushing).
- Temperature Range +180°F to -15°F
- Recommended Operating Load 25 lbs.
- Recommended Max. Operating Speed 376 ft./min.

Other numbers of pitches available on request.

BULK LENGTH - NOT SPLICED	
STOCK NO.	LENGTH
24GCF-5FT	5 FT
24GCF-10FT	10 FT
24GCF-25FT	25 FT
24GCF-50FT	50 FT
24GCF-100FT	100 FT

