

Notes from SEMO Web Dynpro ABAP review:

Elda Prudden, Kevin Lyons 4/25/2012

Design summary

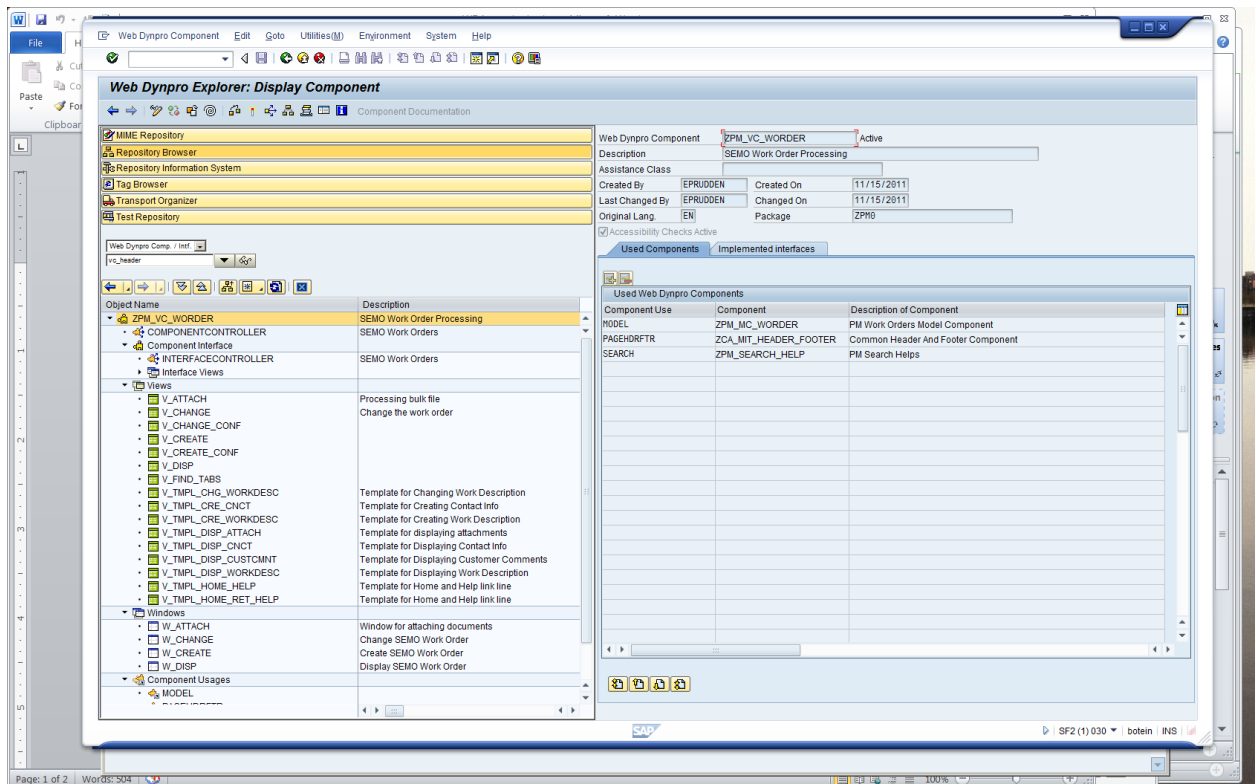
- Level of design detail dependent on PM/customer
- SEMO developed within suite of Building Services apps, specific reference point
- Started with SAP_TRADESHOW_PLUS theme early in the process
- Design process relatively easy with Rita Z, Lisa St Croix.
- Reviewed proposed design with designers at Monday meeting and separate 2-hr 1-1 session with Nancy to come up with basic guidelines for the SEMO applications (e.g. plain background for labels, fill3 for all shading)

WDA summary

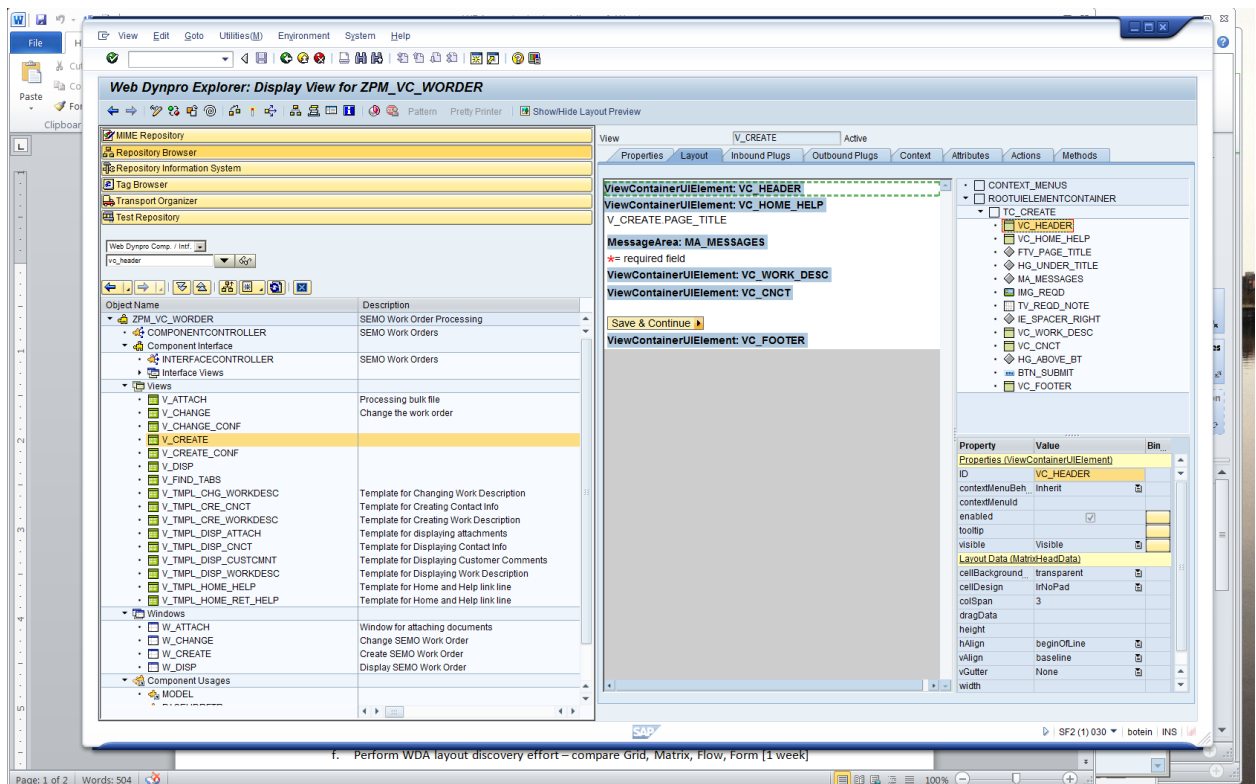
- Leverage SAP Do's and Don't document (AKA "Checklist for High-Performance WDA Programming") – great starting point:
 - http://help.sap.com/saphelp_nw70ehp1/helpdata/en/5e/b29046859d48d68af26c16c75d4a89/content.htm
- SAP and EPI-USE recommended splitting WDA apps into 2 primary WDA components: Model Components (MC's) and View Components (VC's). Model components to handle data calls/updates, i.e. business logic. View components to handle screen logic, UI, and flow. SEMO was developed in this fashion, so you see two WDA components (at least) per SEMO transaction: ZPM_VC_WORDER and ZPM_MC_WORDER. **Actually, the logic for all 3 SEMO applications (Create, Change and Display), reside within the above 2 Web Dynpro components (i.e. separate VC and MC components do not exist per SEMO transaction); so, I was able to re-use parts of the same views and some of the logic for all 3 applications. I did it this way in hopes of using the same views/logic/etc. if I ended up converting the 12 current Java work order apps.**
- SAP no longer recommends this approach. They now recommend use of an ABAP "Assistance class" to perform all back-end, business logic (replaces the MC). Use Web Dynpro methods only for view component logic (VC functionality). This is deemed better for performance. See Do's / Don'ts document.
- Naming conventions: mostly SAP provides the convention. A few MIT-specific topics could be reviewed: **Component, Plug, View, Window**.
- Break simpler pages into re-useable sub views (e.g. work description, contact info) that can be re-used in larger views (e.g. create and display)

For the MIT header & footer, use MIT custom WDA component ZCA_MIT_HEADER_FOOTER. See instructions below on how to include in your WDA app:

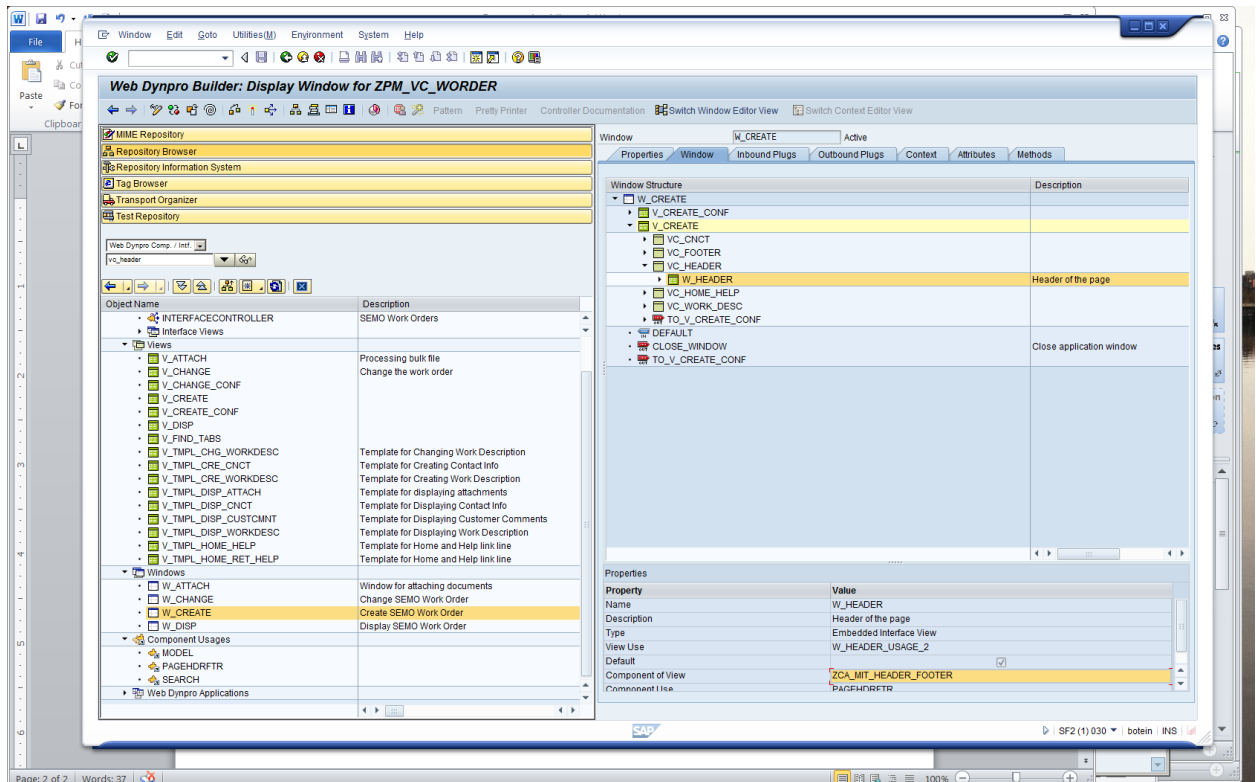
1. Add to top level "Used Components" tab of your WDA app:



2. Add to the View a ViewContainerUIElement



3. Within the Window, assign the view of the Used View Component from step 1



- For consistency with other Building Services apps, a white background was desired. This was achieved by creating a Transparent Container UI element with attributes CellBackground set to 'plain' and horizontal and vertical stretch boxes checked.
- To achieve shading of group of input fields, put each individual input element in transparent container, with fill3 cellBackgroundDesign, see below

View V_TMPL_CRE_WORKDESC Active

Properties Layout Inbound Plugs Outbound Plugs Context Attributes Actions Methods

Describe the problem *

Location of the problem

Building * V_TMPL_CRE_WORKD

Room * V_TMPL_CRE_WORKD e.g. 214 or Lobby

Location V_TMPL_CRE_WORKD e.g. Front entrance

Cost Object V_TMPL_CRE_WORKD enter for project work

Special instructions

Include any access restrictions or scheduling requirements

Do you want an estimate for this work? ☐ Yes ☒ No

CONTEXT_MENUS

- ☐ ROOTUIELEMENTCONTAINER
 - ☐ TC_PROB_DESC
 - ☐ TC_SECTION_HDR_FOR_PROB_DESC
 - ☐ TC_TEXT_1
 - ☒ TE_PROB_DESC
 - ☐ TC_PROB_LOC
 - ☒ SH_PROB_LOC
 - ☒ LB_BLDG
 - ☐ LB_ROOM
 - ☐ TC_ROOM
 - ☒ LB_LOC
 - ☐ TC_LOC
 - ☒ LB_COSTOBJ
 - ☐ TC_COSTOBJ
 - ☐ TC_SPEC_INSTR

Property Value Bin

scrollingMode	none	
tooltip		
visible	Visible	
width		
Layout (MatrixLayout)		
stretchedHorizo...	<input type="checkbox"/>	
stretchedVertically	<input type="checkbox"/>	
Layout Data (MatrixData)		
cellBackground...	fill3	
cellDesign	rPad	
colSpan	1	
height		
hAlign	beginOfLine	
vAlign	top	
vGutter	None	
width		

Preference to use standard SAP icons whenever possible.

Any custom icons / images should be place in the ITS MIME repository (path below). Do not use custom themes to store images since it is unclear if we will use custom themes in the future.

imageHeight	
imageSource	/sap/public/bc/its/mimes/zsapweb/99/images/icon_mitlogo.gif
imageWidth	

Location of the problem

Building * 
Room *

The lookup / search “magnifying glass” icon:

Is a remnant from the MIT1 theme. We should / could replace it with the standard SAP binoculars.

Do you want an estimate for this work? ☐ Yes ☒ No

Radio-buttons placed horizontally, no discussion:

Pop-up screens:

- use transparent container for white background
- set width of screen via table property


Display/Change SEMO work order:

Users had complained about the side-by-side layout for years (here’s the current Work Order Search)

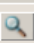


insideMIT

Search Work Orders

Search by Order Number

* Order Number
* Building 
* Required for Search by Number.
Building required only if order is not yours.

Open Search of Kevin P Lyons's orders only

Customer Name
Building  Room e.g. 214 or Lobby
Location e.g. Briggs field
Creation Date  to 
Cost Object
Status



Need business help or technical support?
Review our [contact information](#) for assistance.

Replacing with tabs and adding a list of recent orders was a big improvement:

Search Physical Security Work Orders - Change Order

More Search Options By Order Number

Open Search of Kevin Lyons's orders only

Customer Name Kevin Lyons

Building

Room e.g. 214 or Lobby

Location e.g. Front entrance

Creation Date 02/02/2012 to 05/02/2012

Status Select a status

[Search](#) [Clear Fields](#)

Recent work orders

Order #	Date Submitted	Building-Room-Location	Status	Description
5000808	03/19/2012	W92-127	New Order	leak in ceiling
5000807	03/19/2012	W92-127	New Order	TEST error
5000806	03/19/2012	W92-127	New Order	test
5000787	03/01/2012	W92-127	New Order	TEST
5000778	02/24/2012	W92-127	New Order	1212121



© 2010 Massachusetts Institute of Technology. Need help? For technical support and other resources, review our [contact information](#)

When to use a button versus a link (see above "Search" versus "Clear Fields"), see Nancy.